

Deise Da Silva Cortes is editing this page. Someone else can edit it once they finish, or you can unlock the page now.

You are in: IoT SaaS Support and Managed Services Support Wiki > Welcome to IoT SaaS Support and Managed Services Support > SaaS Pro DNG Report Template Self Service Portal

SaaS Pro DNG Report Template Self Service Portal

Like | Updated Mar 31 by Michael Delargy | Tags: None

IBM CLM SaaS Pro DNG Report Template (WebDAV) Self Service Portal

Report Template Administration

Read and write WebDav management of DNG reporting templates is accessed using your root CLM URL with the context root “/reporting”, as seen in this example.

<https://MYURL.clm.ibmcloud.com/reporting> (edit “MYURL” appropriate to your actual CLM URL).

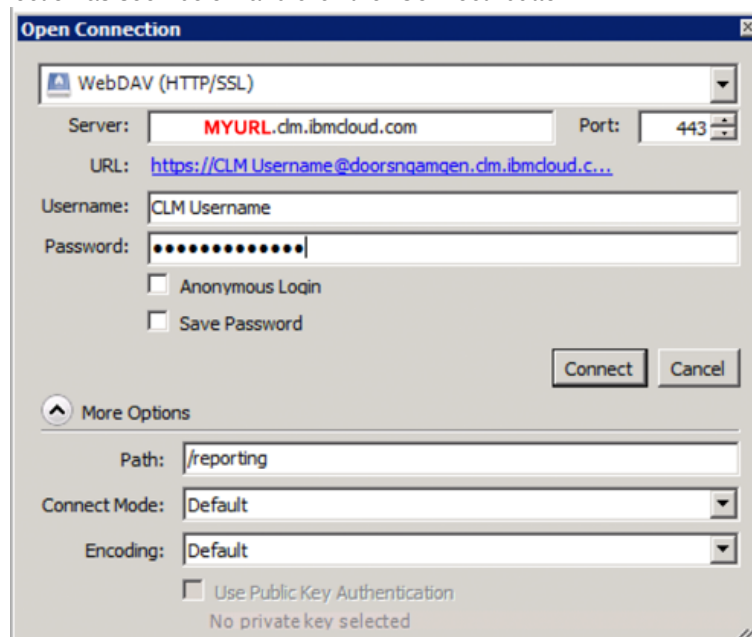
In our experience, mapping WebDav drives to Windows has been difficult without the use of a third party tool. Two such tools are [CyberDuck](#) and [WinSCP](#). CloudOne has tested both of these clients but does not provide support for them. The instructions for CyberDuck below are for your convenience and meant as an example to illustrate the client concept.

CyberDuck WebDav Client Example (Windows)

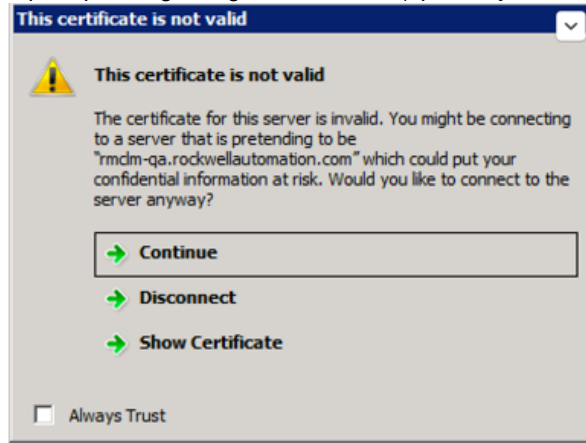
1. Download and install [CyberDuck](#) on your local machine.
2. Click the “Open Connection” button.



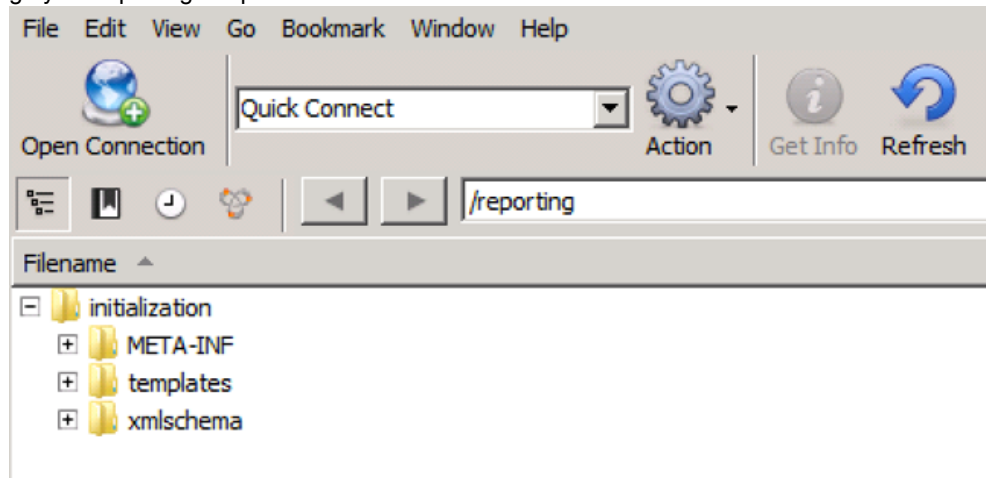
3. Configure the connection as seen below and click the “Connect” button.



- Click continue when prompted regarding the certificate (optionally check the “Always Trust” checkbox)



- Browse and manage your reporting template files.

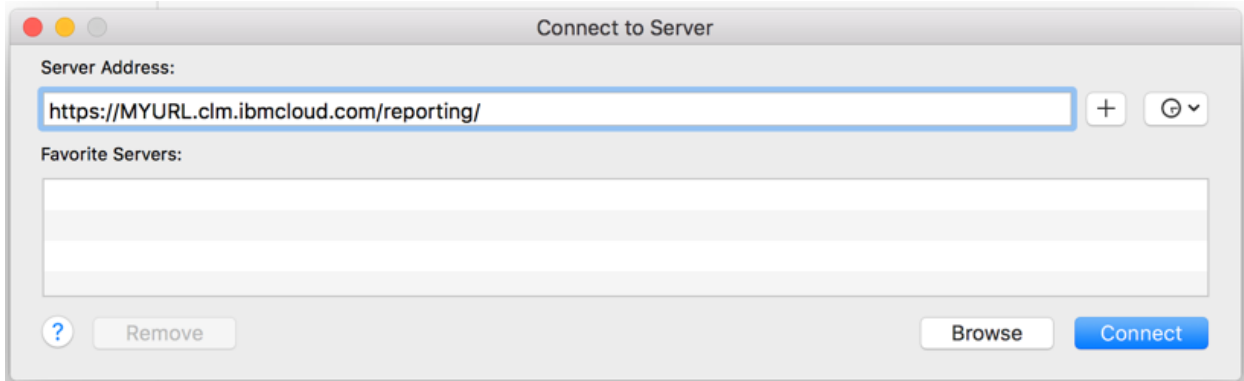


MAC WebDav Drive Mounting

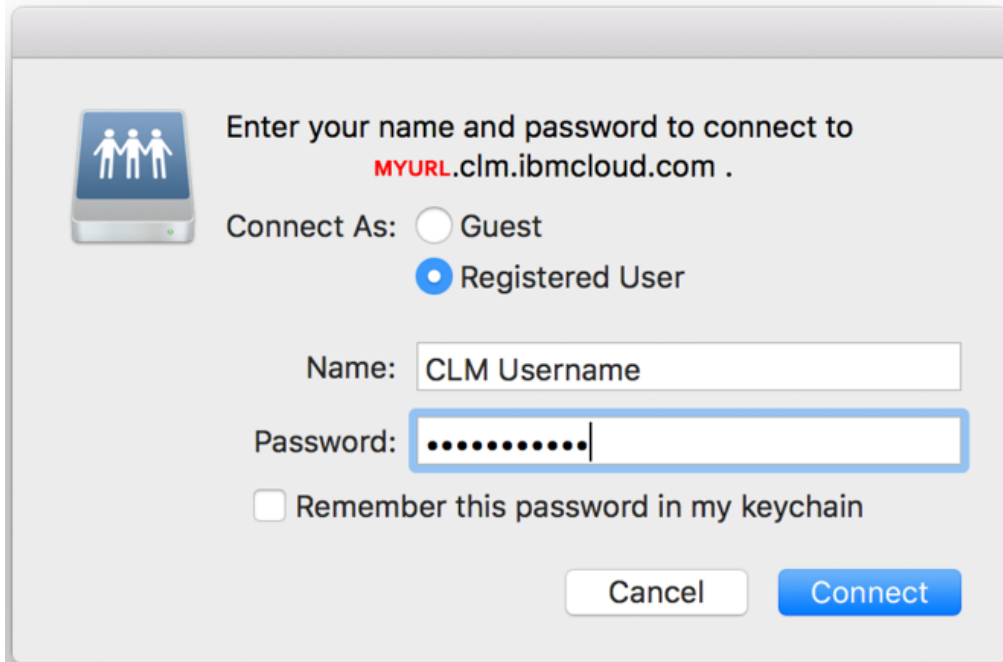
- Open finder.
- In the top menu click “Go” > “Connect to Server”



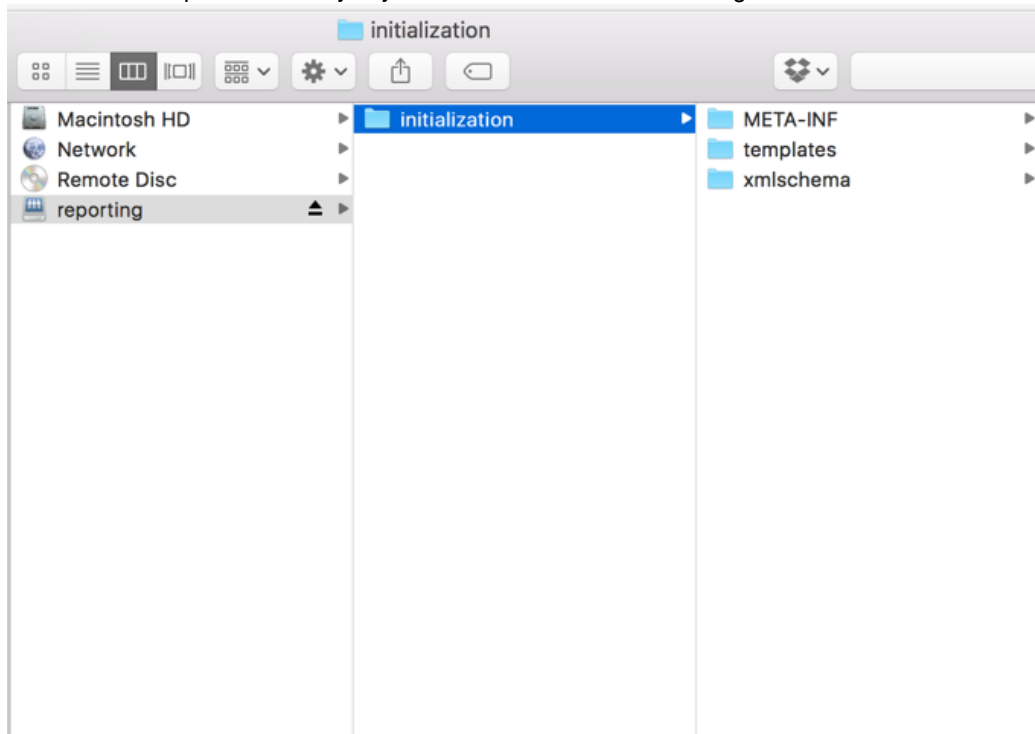
- Enter your reporting URL and click “Connect”. (edit **“MYURL”** appropriate to your actual CLM URL).



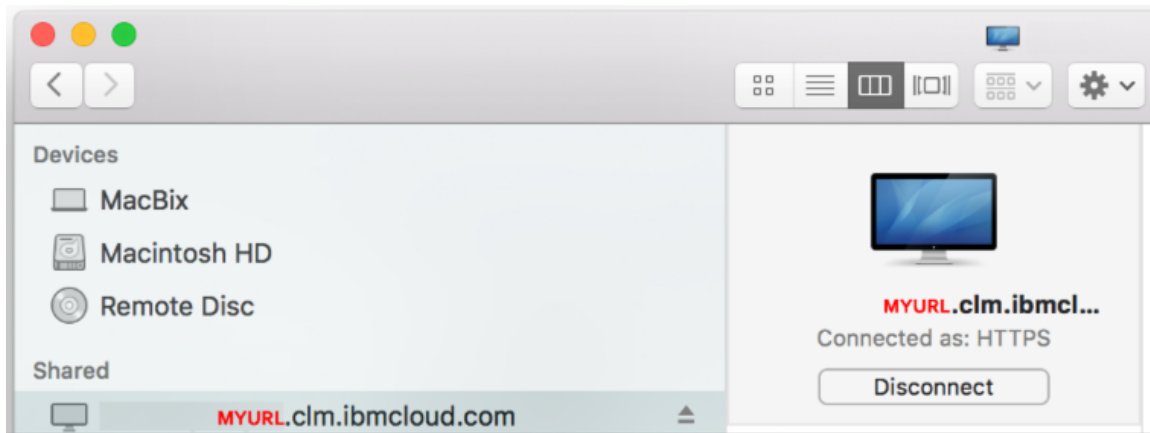
4. Enter your CLM Username and Password.



5. You should now see the templates directory in your Finder and be able to manage the files.



6. To disconnect, in Finder select the drive and click "Disconnect".



When you are done, you must:

1. Open [https://server:9443/application context root/admin](https://server:9443/application%20context%20root/admin) in a browser.
2. Click Debug.
3. Under Services, click Publish Services.
4. Click Initialize Service.

More information

here: https://www.ibm.com/support/knowledgecenter/SSYMRC_6.0.6.1/com.ibm.rational.rrm.help.doc/topics/t_create_reports.html

Comments

There are no comments.