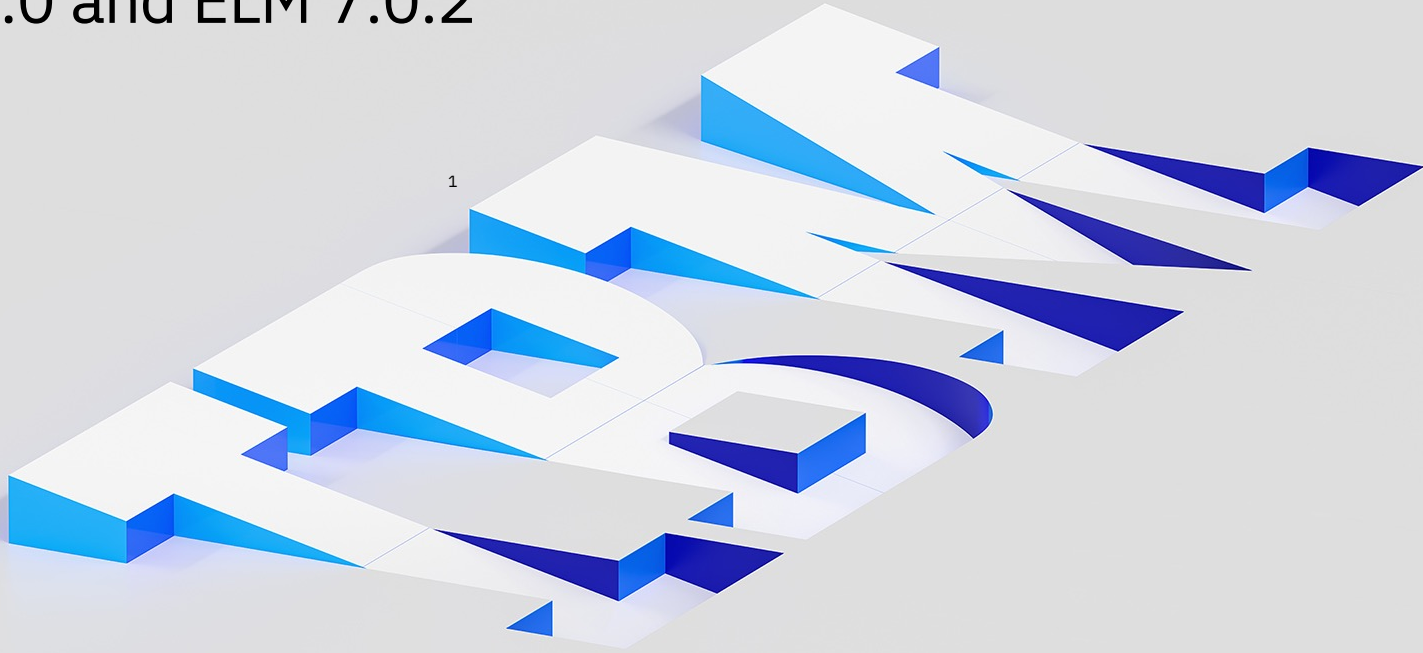


IBM Engineering Lifecycle Management

Enterprise Scaled Agile Domain Models for SAFe 6.0 and ELM 7.0.2



Enterprise Agile Planning using SAFe®

SAFe® is a knowledge base of proven, scalable, and configurable principles, practices, and competencies for Lean, Agile, and DevOps, no matter the organization's size, industry, or complexity.

01

Get up and running quickly with out-of-the-box infrastructure to implement all levels of SAFe

02

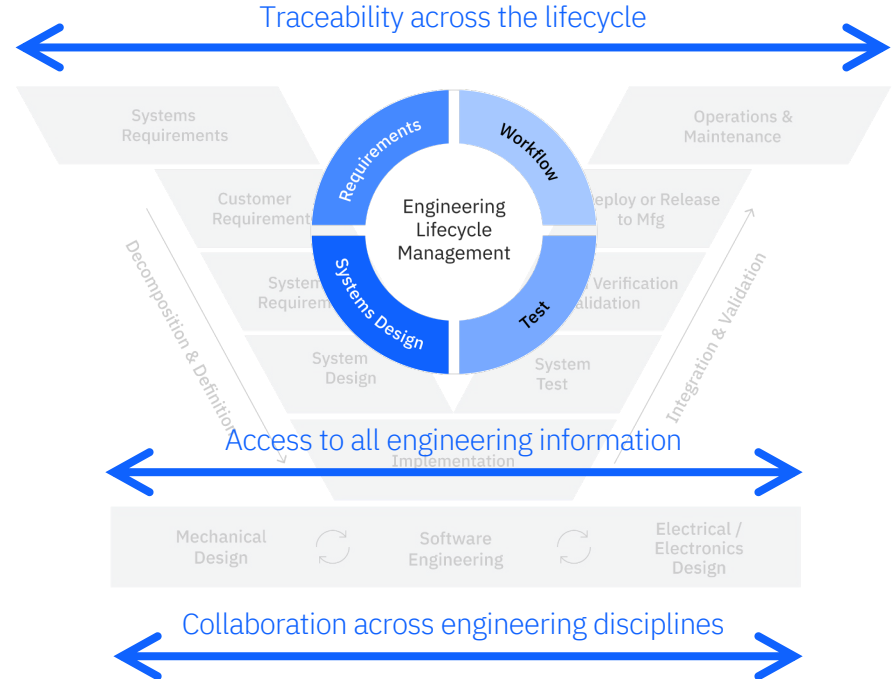
Simplify change to culture and process with quick and easy access to SAFe guidance

03

Improve agility and predictability with role-based dashboards

04

Easily customize to fit your specific needs and organization



ELM Templates for SAFe 6.0

This release adds two predefined process templates that support Scaled Agile Framework (SAFe) 6.0

Full SAFe 6.0

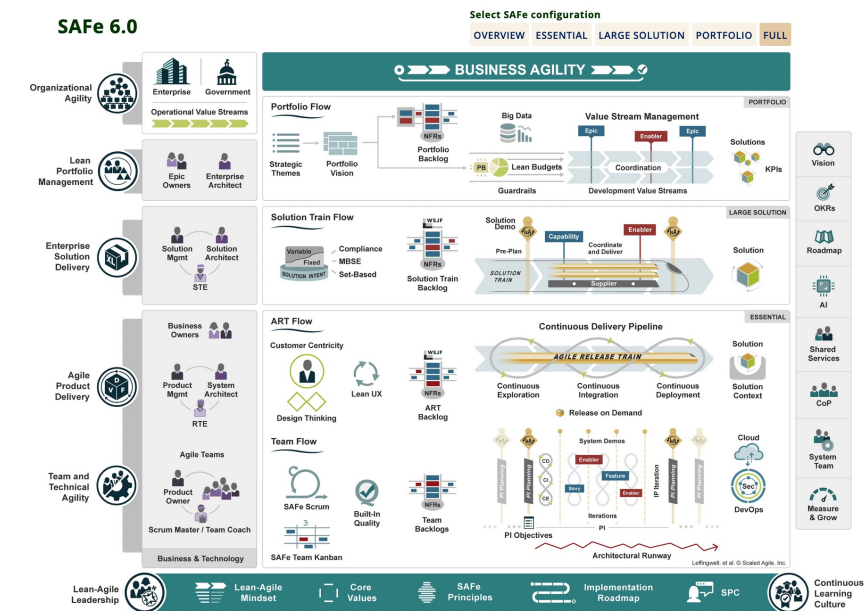
Use template to establish a tooling environment for:

- Full SAFe: with the Portfolio Epic, Solution Epic and Capability
- Large Solution SAFe: with Solution Epic and Capability. Archive the Portfolio Epic work item type
- Portfolio SAFe: with the Portfolio Epic, Solution Epic and Capability. Archive the Solution Epic and Capability work item types

Essential SAFe 6.0

- Use template to establish a tooling environment for an ART and its teams
- These need to be associated with a Full, Large Solution or Portfolio SAFe tooling environments

The world's most trusted system for business agility

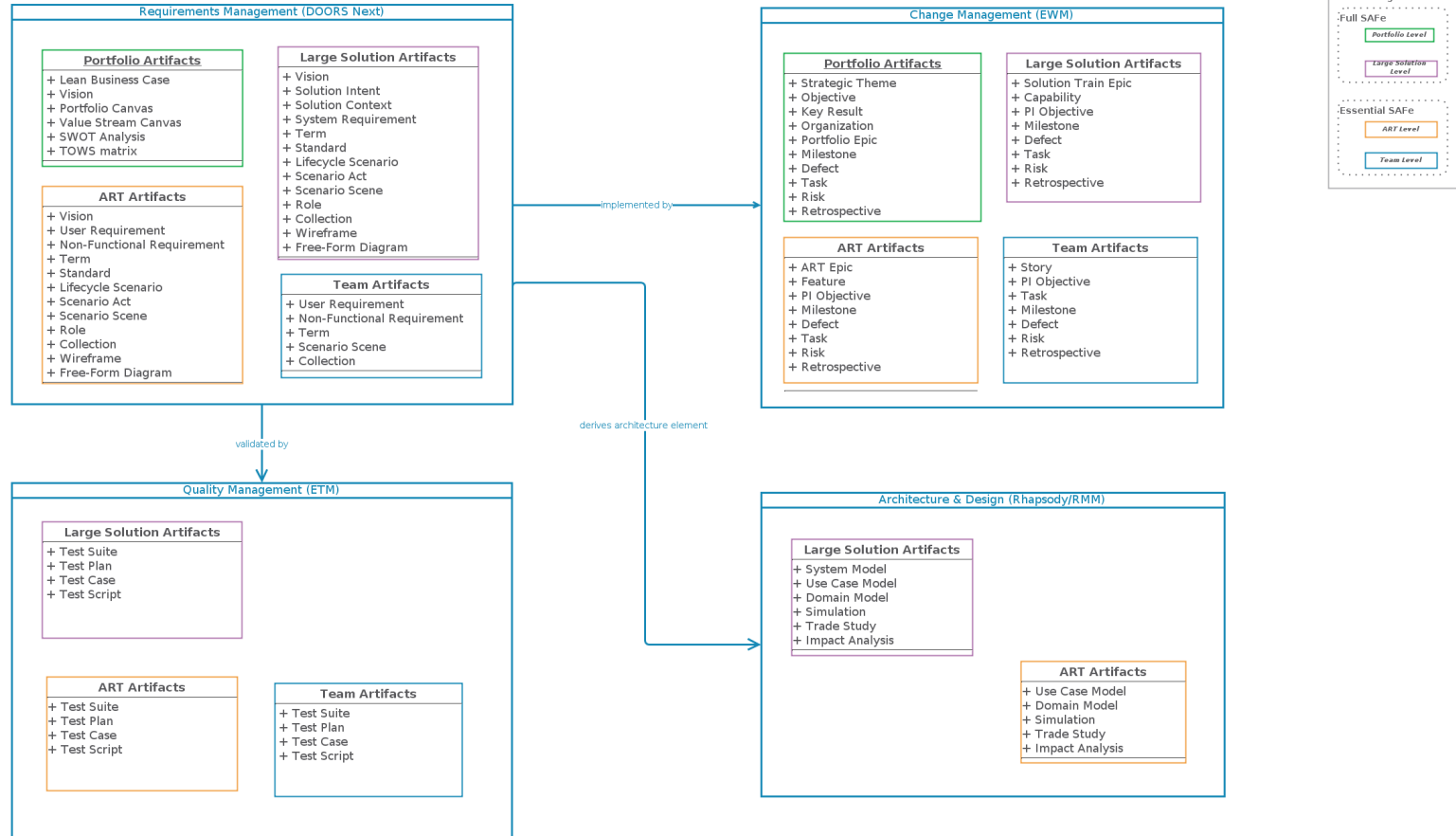


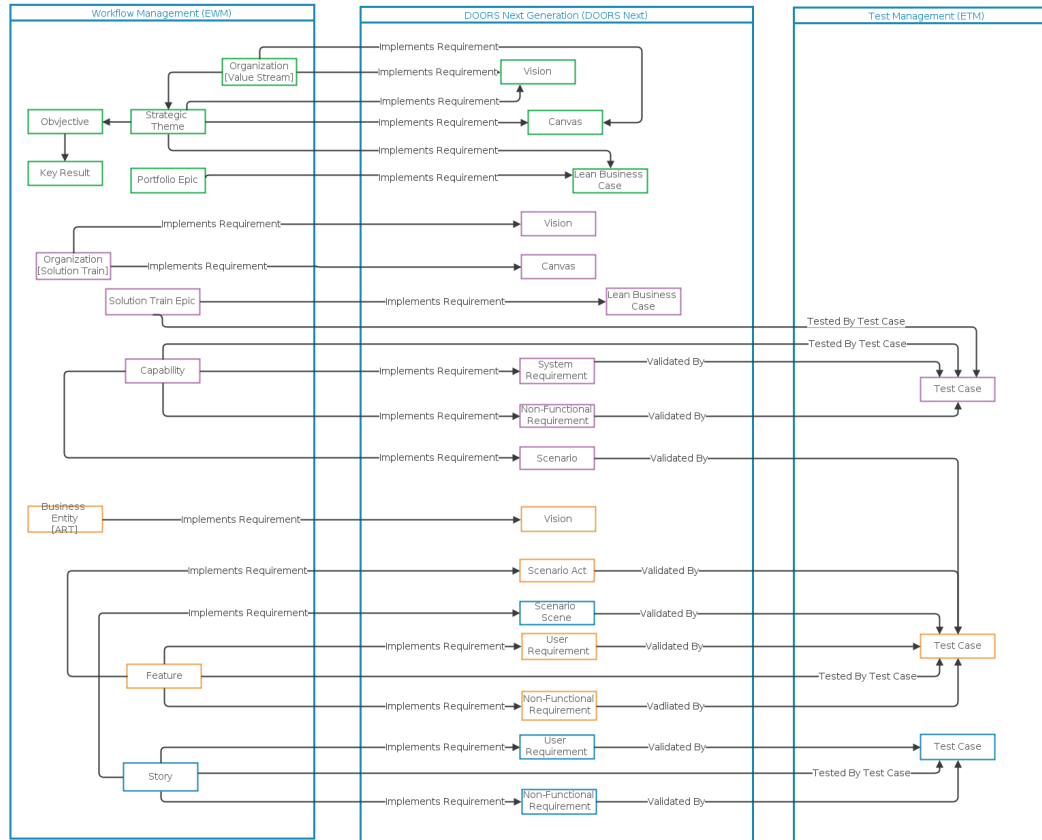
SAFe® Support - Taxonomy

	Track & Plan	Solution Analysis	Quality
Portfolio flow	<ul style="list-style-type: none"> – Strategic theme – Objective & Key results (OKRs) – Lean budget – Portfolio backlog / Kanban 	<ul style="list-style-type: none"> – Portfolio vision / Canvas – Lightweight business case 	
Solution train flow	<ul style="list-style-type: none"> – Solution Train backlog – WSJF ranked list – Roadmap & Kanban 	<ul style="list-style-type: none"> – Value stream Canvas – Solution intent 	<ul style="list-style-type: none"> – Solution Train Test plan – Test cases – Test scripts
ART flow	<ul style="list-style-type: none"> – ART backlog – WSJF ranked list – Roadmap & Kanban – Dependency board 	<ul style="list-style-type: none"> – Solution context – Rules / Personas – Lifecycle Scenarios (Acts, scenes, roles) 	<ul style="list-style-type: none"> – ART test plan – Test cases – Test scripts
Team flow	<ul style="list-style-type: none"> – Ranked backlog – Kanban & Scrum boards – Task board – Dependency board 	<ul style="list-style-type: none"> – User story elaborations – Supporting artifacts – Release collections 	<ul style="list-style-type: none"> – Team test plan – Test cases – Test scripts
	Engineering Workflow Management	ERM – DOORS Next	Engineering Test Management

SAFe 6.0 Domain Models

The domain models are the basis for reporting, so it is important that you understand the artifacts and relationships across the ELM products — this is how everything “hangs together”. We provide a set of domain models which you can use to both understand how the reports access the data and links across a system and define your own domain models that dictate how the reports may need to be altered for your specific environment.





Vision
<ul style="list-style-type: none"> + Northstar + Context Diagram + Key Elements + Key Functionality + Measures + Stakeholders + Other Scope Considerations + Project Constraints
<ul style="list-style-type: none"> + Owner () + Status () + Scope ()

Lean Business Case
<ul style="list-style-type: none"> + Epic Description + Outcome Hypothesis + In Scope + Out of Scope + Non-Functional Requirements + Minimum Viable Product (MVP) Features + Additional Potential Features + Constraints + Stakeholders/Sponsors + Users & Markets Affected + Products, Programs & Services Affected + Impact on Sales, Distribution, Deployment + Analysis Summary + Incremental Implementation Strategy + Sequencing & Dependencies + Milestones & Checkpoints + Attachments
<ul style="list-style-type: none"> + Anticipated Business Impact () + Epic Owner () + Estimated Completion Date () + Estimated Cost (MVP) () + Estimated Story Points (MVP) () + Expected Type of Return () + Funnel Entry Date () + Outsourced Development () + Go/No-Go Decision () + Owner () + Status ()

Portfolio Canvas
<ul style="list-style-type: none"> + Brief Description + Value Propositions: <ul style="list-style-type: none"> + Value Stream(s) + Solutions + Customer Segments + Channels + Customer Relationships + Budget + KPIs/Revenue + Resources & Activities <ul style="list-style-type: none"> + Key Partners + Key Activities + Key Resources + Cost Structure & Revenue Streams <ul style="list-style-type: none"> + Cost Structure + Revenue Streams
<ul style="list-style-type: none"> + Owner () + Status ()

Value Stream Canvas
<ul style="list-style-type: none"> + Brief Description + Value Proposition + Solutions + Solution Content + People and Locations + Customer Segments + Channels + Customer Relationships + KPIs/Revenue + Economic Framework + Programs (ARTs) and Suppliers + Value Stream Roles
<ul style="list-style-type: none"> + Owner () + Status ()

SWOT Analysis
<ul style="list-style-type: none"> + Internal Origin: <ul style="list-style-type: none"> + Strengths + Weaknesses + External Origin: <ul style="list-style-type: none"> + Opportunities + Threats
<ul style="list-style-type: none"> + Owner () + Status () + Scope ()

TOWS Matrix
<ul style="list-style-type: none"> + Internal Strengths + Internal Weaknesses + External Opportunities + External Threats
<ul style="list-style-type: none"> + Owner () + Status () + Scope ()

Solution Context
<ul style="list-style-type: none"> + Installation + Operating Environment + Packaging + Support + Enablement + Services + Marketing + Selling
<ul style="list-style-type: none"> + Owner () + Status ()

Solution Intent
<ul style="list-style-type: none"> + Vision + Specifications + Architecture + Design + Tests
<ul style="list-style-type: none"> + Owner () + Status ()

Vision

Wireframe
<ul style="list-style-type: none"> + Screen Flows
<ul style="list-style-type: none"> + Priority () + Owner () + Status ()

Standard
<ul style="list-style-type: none"> + Description
<ul style="list-style-type: none"> + Priority () + Stability () + Origin () + Owner () + Status ()

Term
<ul style="list-style-type: none"> + Definition
<ul style="list-style-type: none"> + Origin () + Status ()

System Requirement
<ul style="list-style-type: none"> + Description
<ul style="list-style-type: none"> + Priority () + Stability () + Origin () + Owner () + Status ()

Non-Functional Requirement
<ul style="list-style-type: none"> + Description
<ul style="list-style-type: none"> + Non-Functional Type + Priority () + Stability () + Origin () + Owner () + Status ()

Lifecycle Scenario
<ul style="list-style-type: none"> + Purpose + Demonstrated Value + Roles + Acts
<ul style="list-style-type: none"> + Owner () + Status ()

Scenario Act
<ul style="list-style-type: none"> + Description + Roles + Input + Output + Scenes
<ul style="list-style-type: none"> + Owner () + Status ()

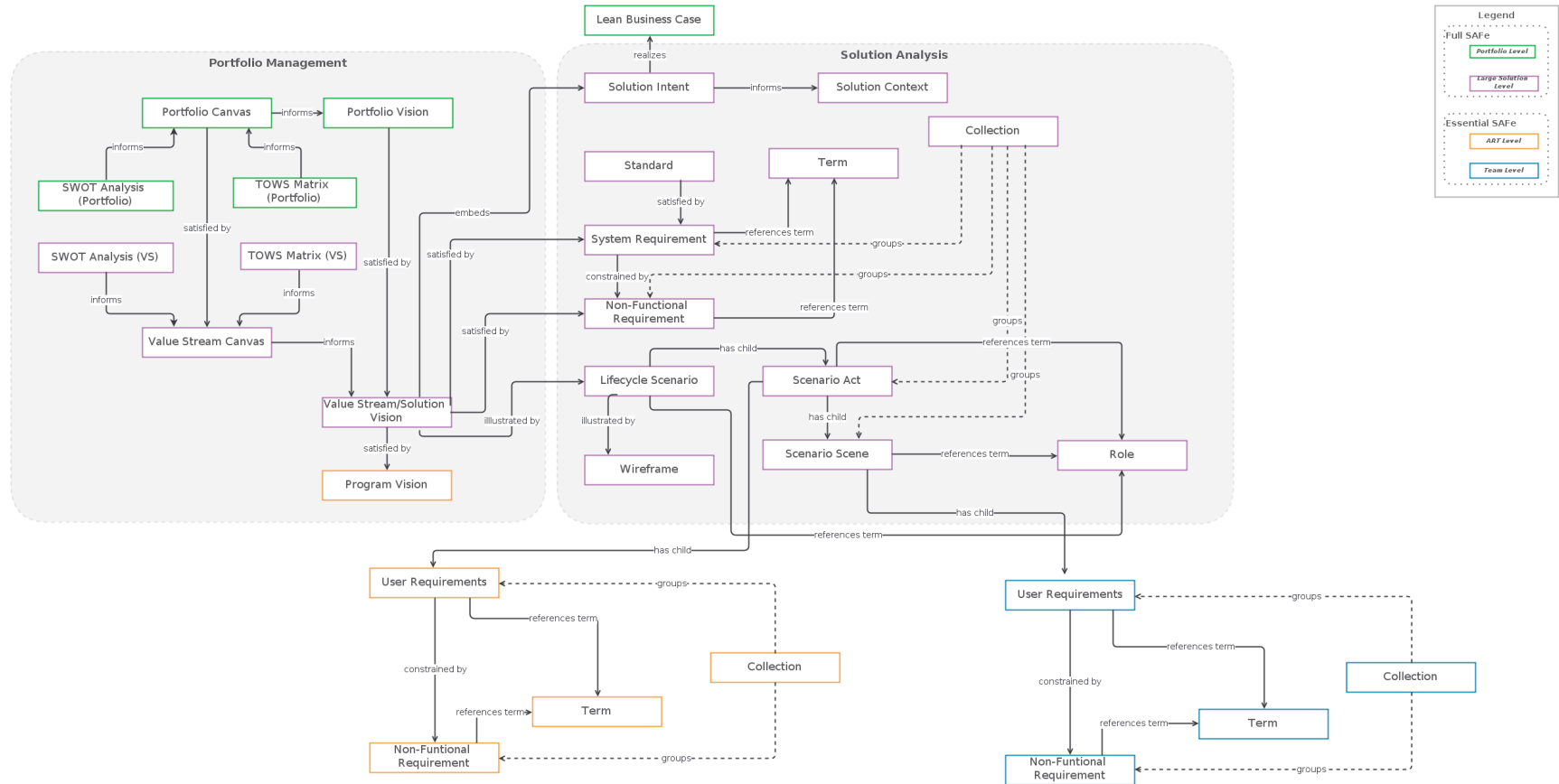
Scenario Scene
<ul style="list-style-type: none"> + Narrative
<ul style="list-style-type: none"> + Owner () + Status ()

Role
<ul style="list-style-type: none"> + Description
<ul style="list-style-type: none"> + Owner () + Status ()

Solution Context
User Requirement
<ul style="list-style-type: none"> + Description
<ul style="list-style-type: none"> + Priority () + Owner () + Status ()
Non-Functional Requirement
Vision
Lifecycle Scenario
Scenario Act
Scenario Scene
Term
Standard

User Requirement
Non-Functional Requirement
Scenario Scene
Term







Organization
+ Value Proposition
+ Scope ()
+ Filed Against ()
+ Owned By ()
+ Allocated Capacity ()
+ Allocated Investment ()
+ Budgeted Capacity ()
+ Budgeted Investment ()
+ Total Market Opportunity ()

Strategic Theme
+ Description
+ Filed Against ()
+ Owned By ()
+ Priority ()
+ Planned For ()
+ Value to Customer ()
+ Impact on Business ()
+ Impact on Competitive Differentiation ()

Objective
+ Goal //Description
+ Achievements
+ Scope ()
+ Objective Type ()
+ Filed Against ()
+ Owned By ()
+ Proposed ()
+ Planned for ()

Key Result
+ Expected Results // Description
+ Achievements
+ Scope ()
+ Filed Against ()
+ Owned By ()
+ Planned for ()
+ Business Value (planned) ()
+ Business Value (actual) ()
+ Achieved Value ()

Portfolio Epic
+ Epic Hypothesis Statement
+ Success Criteria
+ WSJF ()
+ Job Size ()
+ User/Business Value ()
+ Time Criticality ()
+ RROE ()
+ SAFe Work Type ()
+ SAFe Enabler Type ()
+ Estimated Story Points ()
+ Actual Story Points ()
+ Proposed ()

Milestone
+ Success Criteria
+ Milestone Type

Solution Epic
+ Epic Hypothesis Statement
+ Success Criteria
+ WSJF ()
+ Job Size ()
+ User/Business Value ()
+ Time Criticality ()
+ RROE ()
+ SAFe Work Type ()
+ SAFe Enabler Type ()
+ Estimated Story Points ()
+ Actual Story Points ()
+ Proposed ()

Capability
+ Benefit Hypothesis
+ Acceptance Criteria
+ Definition of Done
+ WSJF ()
+ Job Size ()
+ User/Business Value ()
+ Time Criticality ()
+ RROE ()
+ SAFe Work Type ()
+ SAFe Enabler Type ()
+ Estimated Story Points ()
+ Actual Story Points ()
+ Proposed ()

Milestone

PI Objective
+ Description
+ Business Value (planned) ()
+ Business Value (actual) ()
+ Achieved Value (%) ()
+ Scope

Program Epic
+ Epic Hypothesis Statement
+ Success Criteria
+ WSJF ()
+ Job Size ()
+ User/Business Value ()
+ Time Criticality ()
+ RROE ()
+ SAFe Work Type ()
+ SAFe Enabler Type ()
+ Estimated Story Points ()
+ Actual Story Points ()
+ Proposed ()

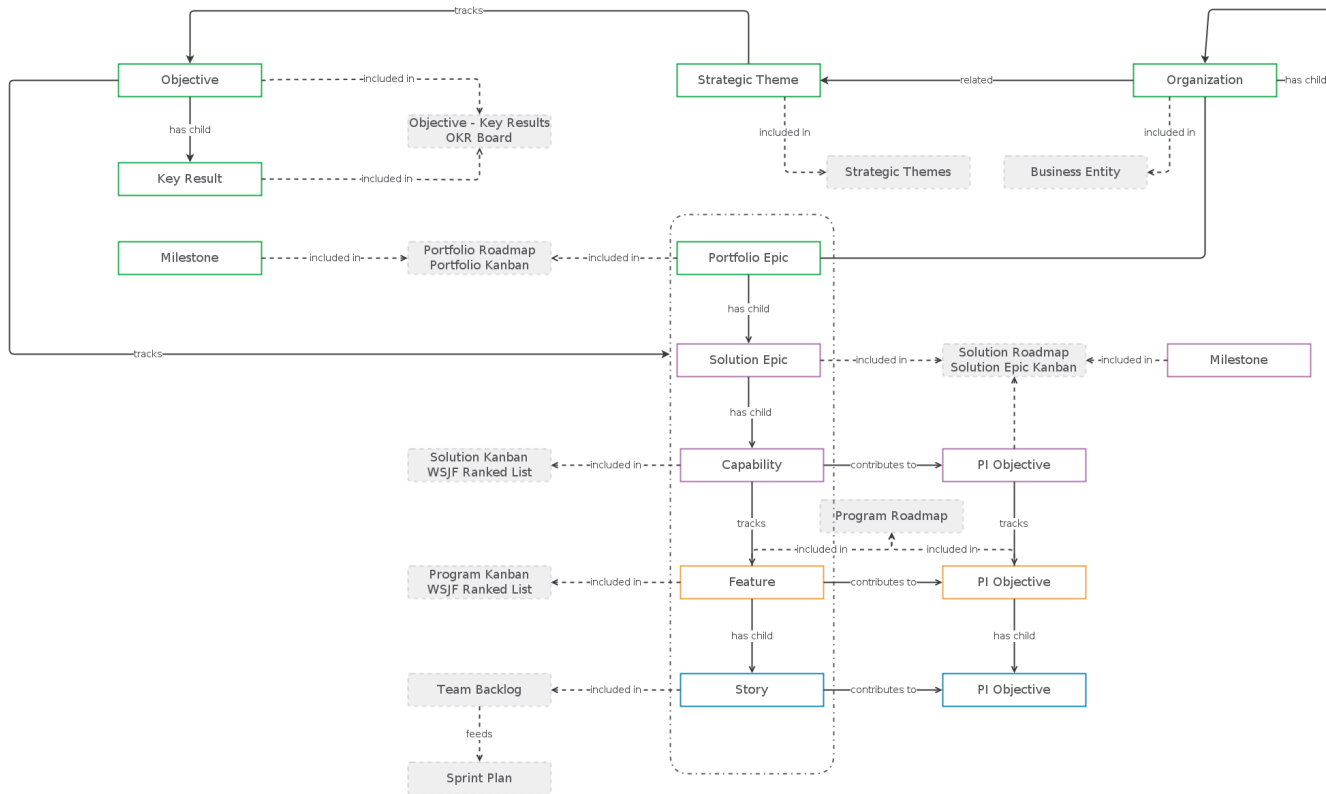
Feature
+ Benefit Hypothesis
+ Acceptance Criteria
+ Definition of Done
+ WSJF ()
+ Job Size ()
+ User/Business Value ()
+ Time Criticality ()
+ RROE ()
+ SAFe Work Type ()
+ SAFe Enabler Type ()
+ Estimated Story Points ()
+ Actual Story Points ()
+ Proposed ()

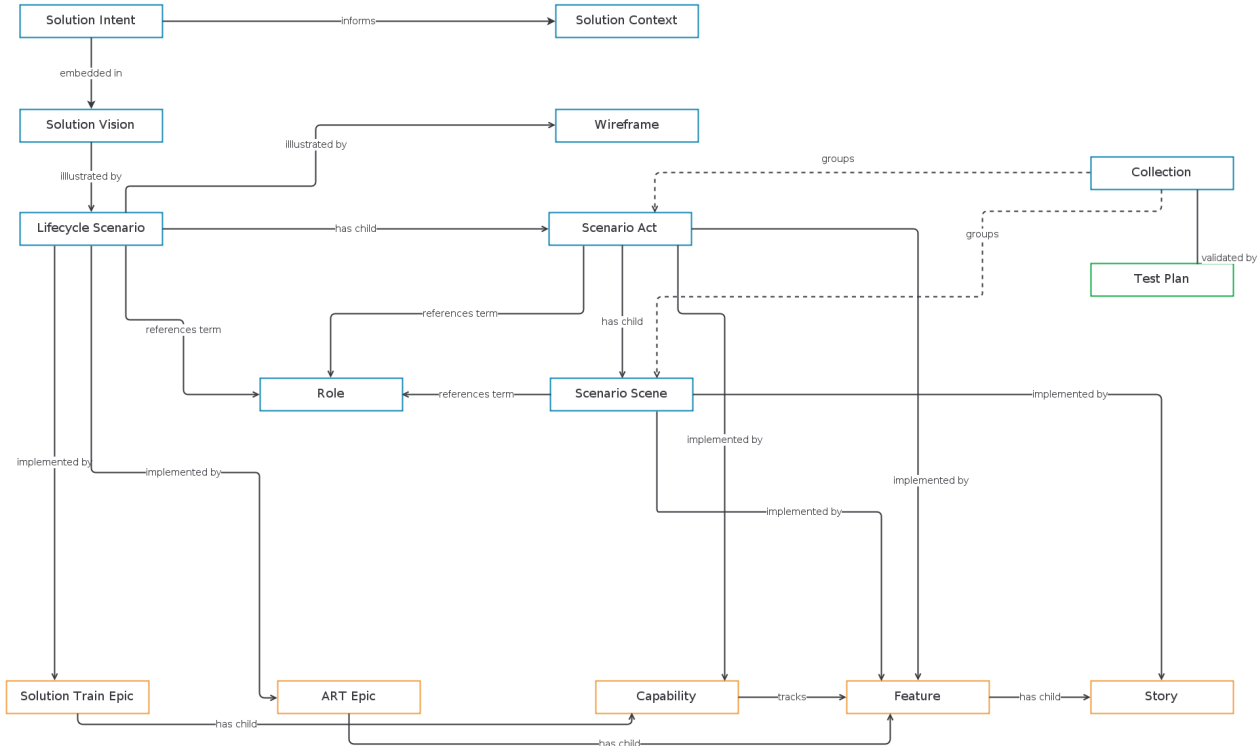
Milestone

PI Objective

Story
+ Description
+ Acceptance Criteria
+ Definition of Done
+ SAFe Work Type ()
+ SAFe Enabler Type ()

PI Objective





Test Plan
+ Requirement Collection Links + Development Plan Links + Test Schedules
+ ART () + SAFe Level () + Test Level ()

Test Case
+ Requirement Links + Development Items + Test Scripts
+ Component () + Test Level ()

Test Suite
+ Test Cases
+ Test Objective ()

Test Script

Test Plan
+ Child Test Plans + Requirement Collection Links + Development Plan Links + Test Schedules
+ Program () + SAFe Level () + Test Level ()

Test Case

Test Suite

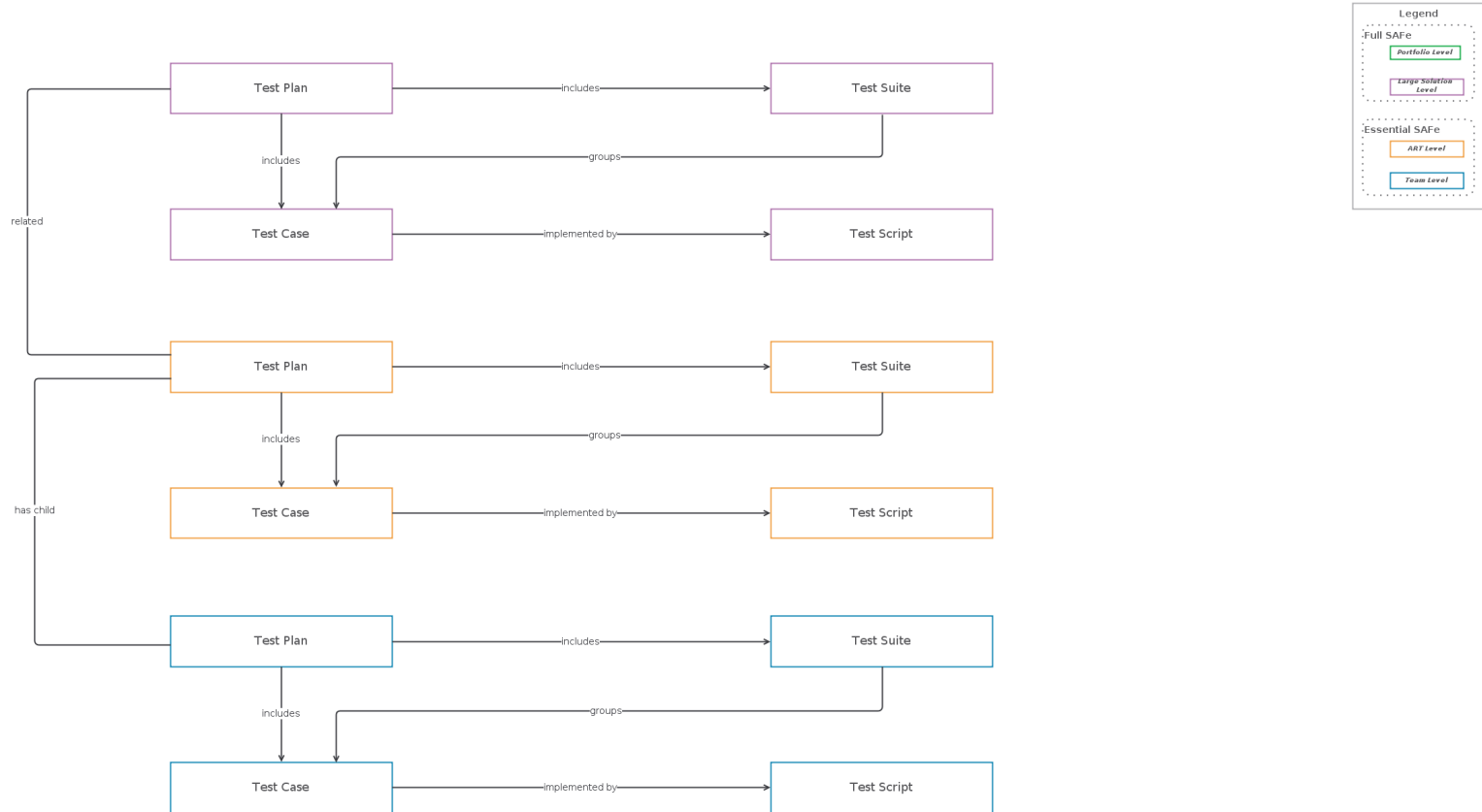
Test Script

Test Plan
+ Requirement Collection Links + Development Plan Links + Test Schedules
+ Program () + SAFe Level () + Test Level ()

Test Case

Test Script





Thank you

Bhawana Gupta

—

Senior Product Manager, IBM Engineering

bhawana.gupta@in.ibm.com

© 2023 International Business Machines Corporation
IBM and the IBM logo are trademarks of IBM Corporation, registered in many jurisdictions worldwide. Other product and service names might be trademarks of IBM or other companies. A current list of IBM trademarks is available on

ibm.com/trademark.

This document is current as of the initial date of publication and may be changed by IBM at any time. Statements regarding IBM's future direction and intent are subject to change or withdrawal without notice, and represent goals and objectives only. THIS DOCUMENT IS DISTRIBUTED "AS IS" WITHOUT ANY WARRANTY, EITHER EXPRESS OR IMPLIED. IN NO EVENT, SHALL IBM BE LIABLE FOR ANY DAMAGE ARISING FROM THE USE OF THIS INFORMATION, INCLUDING BUT NOT LIMITED TO, LOSS OF DATA, BUSINESS INTERRUPTION, LOSS OF PROFIT OR LOSS OF OPPORTUNITY.

Client examples are presented as illustrations of how those clients have used IBM products and the results they may have achieved. Actual performance, cost, savings or other results in other operating environments may vary.

Not all offerings are available in every country in which IBM operates.

It is the user's responsibility to evaluate and verify the operation of any other products or programs with IBM products and programs.

The client is responsible for ensuring compliance with laws and regulations applicable to it. IBM does not provide legal advice or represent or warrant that its services or products will ensure that the client is in compliance with any law or regulation.