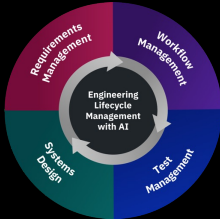


Agile@Scale: What's New in 7.0

Agenda

- What's New Summary
- User Experience
- Reports
- SAFe® Updates

What's New Summary



Agile@Scale Improvements in ELM 7.0

User Experience *Quick Planner* updates

Reporting 7.0 Refresh

SAFe 4.6 Templates for SAFe 4.6 are delivered


SAFe® Risk ROAMing

Updated content

For each work item type, specify the attributes you would like inherited automatically by *child* work items when you use *Quick Create*

Quick Create

Configure quick-create attributes. Note: You cannot remove required attributes. For instance, if Filed Against is a required attribute, it appears as: Filed Against *

 Program Epic	Filed Against * Description Owned By Priority Severity Tags Found In Due Date Subscribed By Parent
 Feature	Filed Against * Description Owned By Priority Severity Tags Found In Due Date Subscribed By Parent
 Story	Filed Against * Description Owned By Priority Severity Tags Found In Due Date Subscribed By Parent
 Task	Description Filed Against * Owned By Priority Severity Tags Found In Due Date Subscribed By Parent
 Defect	Filed Against * Description Owned By Priority Severity Tags Found In Due Date Subscribed By Parent
 PI Objective	Filed Against * Description Owned By Priority Severity Tags Found In Due Date Subscribed By Parent

Quick Planner: Configurable color highlighting based on filters

Colored tags

Create color-coded, custom tags to quickly identify work items.

Color	Label
	<input type="text" value="Fixed-Date"/>
	<input type="text" value="Expedite"/>
	<input type="text" value="Provide a label for the tag"/>

+ Add another color tag

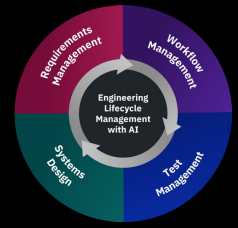
Values for Tags #

- abc abc
- evaluate evaluate
- expedite expedite
- fixed-date fixed-date
- mustfix mustfix
- showstoppers showstoppers
- standard standard

*Tags =

The screenshot displays three panels of work items from the Quick Planner. The first panel, titled 'All Stories', shows three stories with tags 'Fixed-Date' (blue) and 'Expedite' (black). The second panel, titled '#expedite', shows two stories with tags 'Fixed-Date' (blue) and 'Expedite' (black). The third panel, titled '#fixed-date', shows two stories with tags 'Fixed-Date' (blue) and 'Expedite' (black). A blue arrow points from the 'Add another color tag' button in the 'Colored tags' panel to the 'Fixed-Date' tag on the first story in the 'All Stories' panel.

Reporting: Minor updates



- 1 Use of Custom Expressions (where possible) has replaced Advanced SQL which enables data and formatting via Report Builder for those reports
- 2 Some reports have been consolidated for simplicity
- 3 Report archives and supporting documents have been updated

Note: SAFe content on developerWorks has moved to jazz.net.
The landing page remains the same: <http://jazz.net/safe>

SAFe Updates



Templates

New templates for EWM, DOORS Next, ETM and ELM LPA for SAFe 4.6
Deprecation of SAFe 4.0 templates

Risk ROAMing

Support for Risk ROAMing via workflow updates and plan view

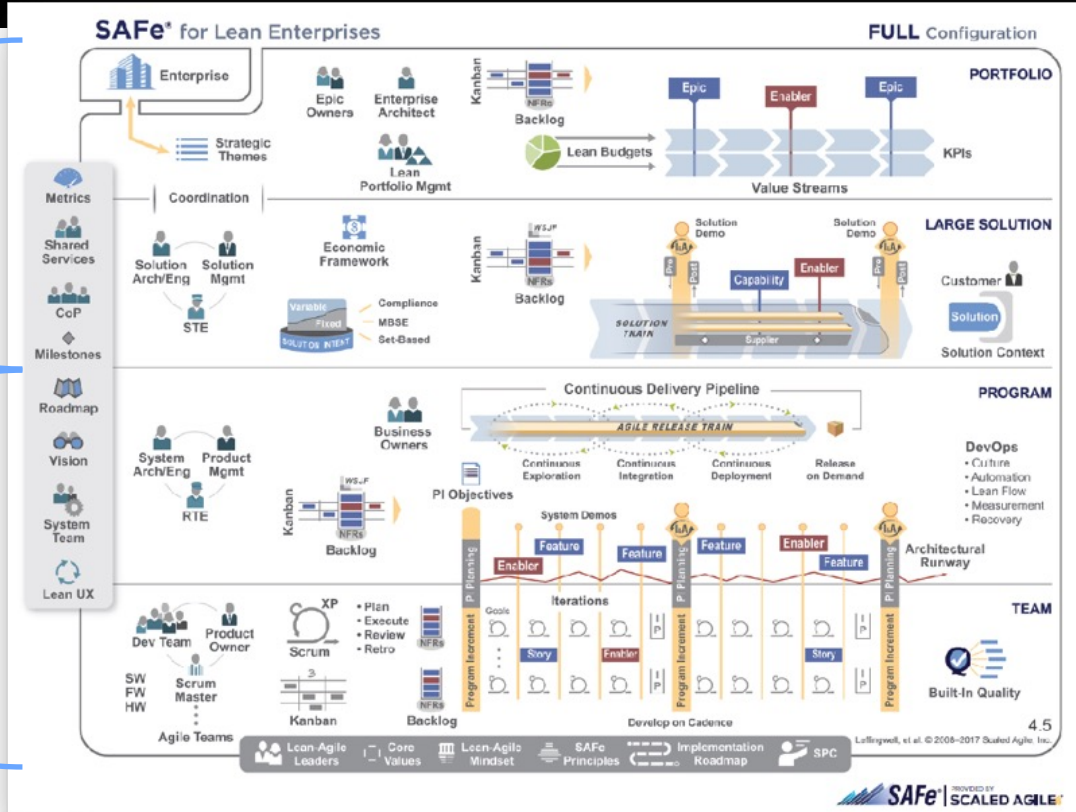
Other Assets

Updated Domain models for SAFe 4.6
New SAFe 4.5 → SAFe 4.6 Configuration documentation
Updated content for new artifacts: Portfolio Canvas, Value Stream Canvas

New SAFe 4.6 templates for Full or Essential SAFe

Full SAFe 4.6

Essential SAFe 4.6



SAFe 4.6 Updates

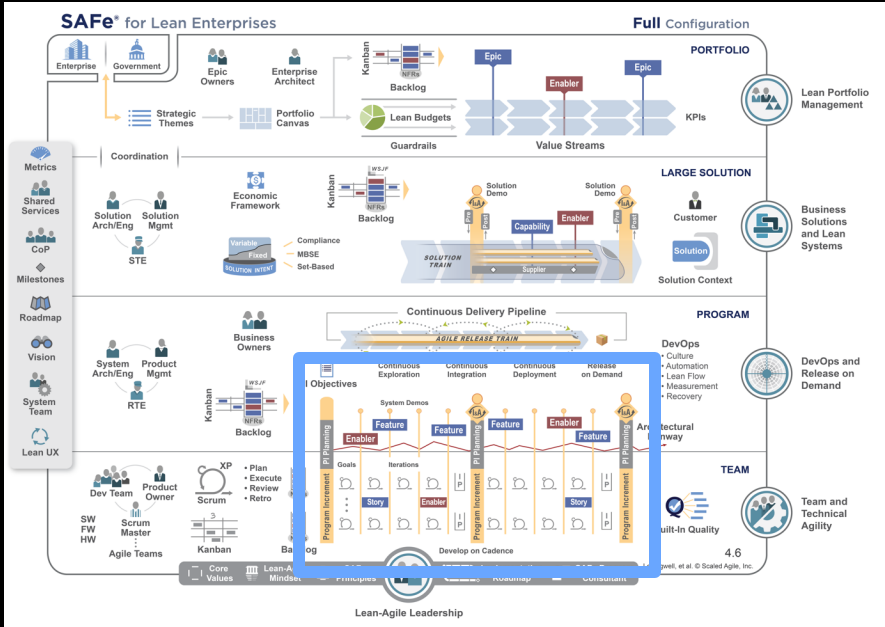
EWM

- New *Risk ROAM* state group, updated *Risk* workflow, new **Risk ROAMing Board** plan view
- Updated *Milestone* work item type with *Milestone Type* attribute

DOORS Next



- New artifacts for Portfolio Canvas, Value Stream Canvas

The world's leading framework for enterprise agility



scaledagileframework.com

Updated *Milestone* work item type

 **Milestone <11:45:27> *** 

Summary:

[Overview](#) [Links](#) [Approvals](#) [History](#)

Details

Type:

Milestone Type:

Filed Against:

Project Area:

Team Area:

Tags:

Portfolio Canvas

Value Stream Canvas

← | ... > Artifact Templates > | 799 [SAFe] Portfolio Canvas Template ?

[Portfolio Name] Portfolio Canvas

Type description

Brief Description

<Indicate whether this Portfolio Canvas represents the as-is or desired to-be state of the Portfolio.>

Value Propositions

<Describe the Value Streams that deliver value for the Portfolio. If you have created Value Stream artifacts, provide the link in the table below. >

Value Streams	Solutions	Customer Segments	Channels	Customer Relationships	Budget	KPIs/Revenue
[Link to Value Stream artifact]	List of solutions provided by	Customers serviced by this value	Channels used by this value stream	Types of customer relationships	Value Stream budget (can also be	How is the performance of this value

← | ... > Artifact Templates > | 807 [SAFe] Value Stream Canvas Template ?

[Value Stream Name] Value Stream Canvas

Type description

Brief Description

<Briefly describe the value stream and provide a link to the **Value Stream** artifact.>

Value Proposition

<"Promise of the Value Stream" ... For [customers] who [do something] the [solution] is a [something - the "how"] that [provides this value]. Unlike [competitor, current solution, or non-existing solution] our solution [does something better - the "why"].>

Solutions

<Systems, products, services, applications>

Solution Content

<Link(s) to **Solution Context** artifacts.>

Risk ROAMing

A mechanism used during PI planning for **managing risks** by categorizing them to treat them adequately.

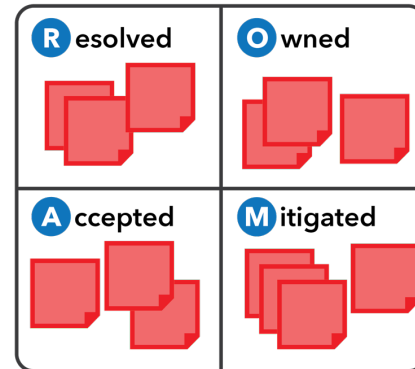
Risks identified by the teams are categorized into one of the following categories:

Resolved Has been addressed. No longer a concern.

Owned Someone has taken responsibility.

Accepted Nothing more can be done. If risk occurs, release may be compromised.

Mitigated Team has plan to adjust as necessary.



Manage risks effectively

Have confidence in your ability to deliver on objectives



JKE Financial Services Roadmap 58 items total, 58 loaded items: 47 open, 11 closed | Ends in: --

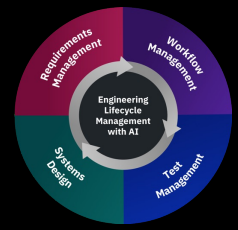
Plan Details Ed

Planned Items Links Snapshots Dashboard Notes

View As: Risk ROAM Board Exclude (53 items excluded) Type to Filter Add Work Item

New 1/5	Risk ROAM				Closed	
New	Owned	Mitigated	Accepted	Resolved	Closed	Invalid
612 Solution Risk Unassigned 20% - Minor 20% - Very Low --	610 Program Risk Unassigned 40% - Moderate 60% - Moderate -- 613 Another Solution Risk Unassigned 20% - Minor 20% - Very Low --		611 Team Risk Unassigned 20% - Minor 100% - Very High --	295 Summer vacation plans are limiting capacity for next few Unassigned 20% - Minor 60% - Moderate --		

Benefits of Risk ROAMing



Improve the confidence of meeting Program PI objectives

- 1 Ensures Program-wide understanding and agreement on all risks
- 2 Provides broad means of categorizing risks to effectively address them
- 3 Fosters collaboration across disciplines, functions, and levels
- 4 Clears path for meeting PI Objectives with confidence

Thank you