



bmacisaa@us.ibm.com

[Go to IBM](#)



Agenda

- Process builder
 - Process slots
 - How it all fits
 - Demo



Process builder is a “Wizard” for creating configurations

- Uses XML syntax to specify:
 - ▶ Pages to display
 - ▶ Questions
 - ▶ Answers
 - ▶ Actions – what to add or subtract
- Selection syntax is richer than the configuration UI
 - ▶ Add/subtract tagged elements
 - ▶ Add/subtract based on name matching
 - ▶ Can document selection rationale in comments
- Self-maintaining
 - ▶ the configuration stores the answers/query actions
 - ▶ refresh when library changes (execute “Run stored queries”)
- Can be further customized using the Team Process perspective.



Example

Questions/
Answers

Preview

The screenshot displays the IBM Rational Method Composer interface, specifically the 'Process Builder' window. The window is divided into several panes:

- Process Builder Pane:** Contains instructions for selecting and previewing content from the plug-in library. It includes a section for 'Architecture practices' and a 'Questions and answers' section with a list of practices. The 'Component-based software architecture' practice is selected and checked. Below this is a 'Brief description of selected element' which reads: 'A model-based approach to documenting a software architecture using addressing multiple views of architecture.' At the bottom of this pane are buttons for '< Back', 'Next >', 'Finish', and 'Cancel'.
- Configuration Pane:** Shows the 'new_config' configuration. It has tabs for 'Standard' and 'Navigation'. Under the 'Standard' tab, a tree view shows the following structure:
 - publishing_view
 - Release Lifecycle
 - Practices
 - Component Based Software Architecture (highlighted)
 - Formal reviews
 - Use Case Driven Development
- Content Pane:** Displays the details for the selected 'Practice: Component Based Software Architecture'. It includes a trophy icon, a description: 'This practice defines a system's functional architecture by breaking the system up into a number of collaborating components. It focuses on identifying the major abstractions of the system and making decisions on how the system will be built to ensure resilience and maintainability.', and two buttons: 'Expand All Sections' and 'Collapse All Sections'. Below this is a 'Purpose' section with three paragraphs of text describing the practice's benefits. At the bottom right of this pane is a 'Back to top' link.

Process builder as alternative to configuration UI

- Can use XML syntax to specify a configuration
- No need to ask questions
 - ▶ Use the rich syntax to specify the desired selections
 - ▶ Can document selection rationale in comments



Syntax

```
<selection id="{unique id}">
<action>{ADD/SUBTRACT}</action>
  <query>
    <where>
      <group type="{AND/OR}">
        <group>
          <condition name="{PLUGIN/TAG/TYPE}" operator="{IS/IS NOT}" value="{text string}"/>
        </group>
        ...
      <group>...</group>
    </group>
  </where>
</query>
</selection>
```



Question and Answer Process Builder

- Use questions to determine the configuration to build
- Self-maintaining:
 - ▶ Answers are remembered in the configuration
 - ▶ If the library changes, refresh by executing "Run stored queries"



Agenda

- Process builder
- Process slots
- How it all fits
- Demo



Process slot: definition

- A placeholder for building up WBS structures
- Defined in “core”
- “Filled” when you select practices
- Use to build WBS structures



Example use

- Organization doesn't care HOW requirements are specified
 - does mandate that requirements BE specified and be reviewed/approved
- Add a **Define requirements** slot
 - Core.Tech.Slots\Slot - Define requirements
- Use in a WBS, add a mandatory review/approval

Presentation Name	Model Info
[-] Lifecycle	
[-] Define requirements	extends 'Slot - Define requirements'
[-] Approve requirements	

- Populate from one or more requirements definition practices

Presentation Name	Model Info
[-] user_story_driven_dev_t_slot_assign	
[-] Define requirements	contributes to 'Define requirements'
[-] Identify User Roles and User Stories	
[-] Capture Confirmations	
[-] Define User Roles and User Stories	

Result

(if practice selected)

[-] Lifecycle
[-] Define requirements
[-] Identify User Roles and User Stories
[-] Capture Confirmations
[-] Define User Roles and User Stories
[-] Approve requirements



Uses

1. Define a standard organization WBS with mandated tasks
 - Slots where alternatives permitted
2. Define alternative WBSs for different styles of development
 - Waterfall vs. Scrum
 - Maintenance vs. New development
 - can use slots for common portions / alternatives
3. Standards
 - Define slots for mandated standards
 - Fill from practices
 - Can see which standards sections are addressed by the practices



Contribution order

Example:

- business process sketching AND user stories
 - ▶ both add to “define requirements” slot
 - ▶ business process sketching tasks go first.
- Solution: Specify contribution order:

The screenshot shows the 'Define requirements' activity configuration in the IBM Rational software. The 'Contribution Order' is set to 2, which is highlighted by a yellow arrow. The interface includes a 'Presentation Name' field with the value 'user_story driven devt slot assign', a 'Model Info' field, and a 'Description' field with the value 'Define requirements'. The 'Variability type' is set to 'Contributes', and the 'Base' is set to 'Define requirements, core.tech.slot.process-i'. The 'Contribution Order' is set to 2.

Presentation Name	Model Info
user_story driven devt slot assign	
Define requirements	contributes to 'Define requirements,

Description Work Breakdown Structure Team Allocation Work Product Usage Consolidated V

Problems Properties Team Advisor Search

Activity : Define requirements

General Variability type: Contributes

Documentation Base: Define requirements, core.tech.slot.process-i

Guidance Contribution Order 2



Agenda

- Process builder
- Process slots
- How it all fits
- Demo



Preparation (Method architect)

1. Define slots in “core”
2. Contribute to slots in practices
3. Define WBS structures using slots
 - ▶ In practices for practice-specific WBS
 - ▶ “Process” plugin for WBS that directly uses mandated practices
4. Define process builder or builders:
 - ▶ Initial selection is “core” plus mandated practices
 - ▶ May include mandated overall WBS or provide choices.



Usage scenario: Creating a custom process

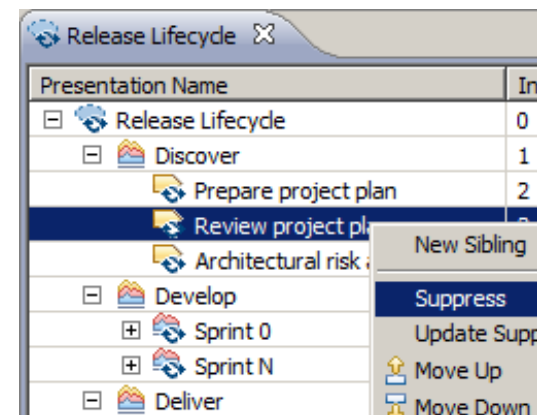
Step 1: Execute process builder

1. Process builder perspective
2. Select builder wizard
3. Select starter kit option
 - ▶ Answer questions
 - ▶ Result is a “starter kit” plug-in that contains:
 - Elements selected
 - WBS generated
 - Tree structure for browsing

Questions and answers

What type of process do you follow?
(Select one of the following)

- ☒ Agile
- ☐ Waterfall



Step 2: Customize the resulting plugin

1. Team process perspective:

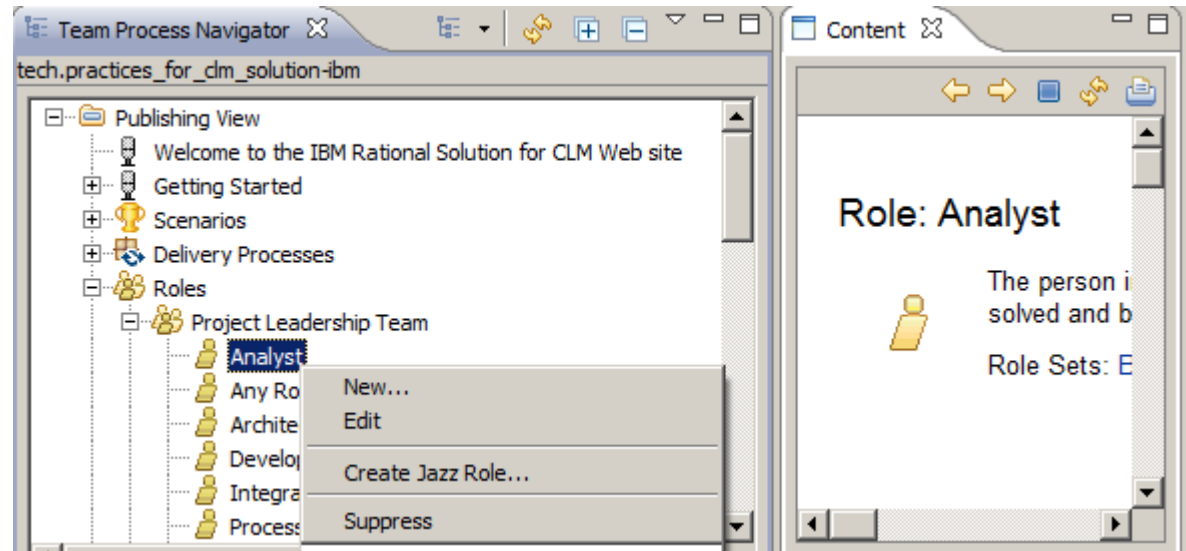
- Create a team
- Add/remove/edit
- Changes recorded in team plug-in

2. Authoring perspective

- Edit WBS (add or suppress)
- Publish and deploy the result

3. Team process perspective

- Generate RTC process template and/or work item templates



Step 3: Follow the process

With Rational team concert:

- ▶ Links from work items
 - Direct access to process guidance

- ▶ Update process as project proceeds
 - Create new work items roles, work item types, and templates (RMC/RTC integration)
 - Can re-run builder if base library changes (answers are remembered – “run stored queries”)

Task 367 ?

Summary: * **Plan the release**

Overview Links Approvals History

Details

Type: Task Priority: Unassigned

Filed Against: JKE - Mobile Bank Planned For: Sprint 01

Estimate:

Description [Edit](#)

At the beginning of a project the team will create a high-level release plan

[See detailed description.](#)

Task: Plan the release

At the beginning of a project the team will create a high-level release plan [Expand](#)

Purpose

To level-set expectations (internal and external) and to proactively uncover needs and dependencies

Relationships

Roles	Primary:	Additional:
	• Development Team Member	• Product Owner
		• Scrum Master

Inputs

Mandatory:	Optional:
• Product Backlog	• None

Main Description

At the beginning of a project the team will create a high-level release plan. The team cannot possibly plan is not necessary. The release plan should address:







© Copyright IBM Corporation 2013. All rights reserved. The information contained in these materials is provided for informational purposes only, and is provided AS IS without warranty of any kind, express or implied. IBM shall not be responsible for any damages arising out of the use of, or otherwise related to, these materials. Nothing contained in these materials is intended to, nor shall have the effect of, creating any warranties or representations from IBM or its suppliers or licensors, or altering the terms and conditions of the applicable license agreement governing the use of IBM software. References in these materials to IBM products, programs, or services do not imply that they will be available in all countries in which IBM operates. Product release dates and/or capabilities referenced in these materials may change at any time at IBM's sole discretion based on market opportunities or other factors, and are not intended to be a commitment to future product or feature availability in any way. IBM, the IBM logo, Rational, the Rational logo, Telelogic, the Telelogic logo, and other IBM products and services are trademarks of the International Business Machines Corporation, in the United States, other countries or both. Other company, product, or service names may be trademarks or service marks of others.



Tip for adding slots to WBS structures

- After defining slots, create a configuration that includes the slots plug-in
- Select that configuration in the dropdown
- Now you can drag and drop slots from the configuration view into WBS structures
- Choose “extend”
- Change variability to “contributes”

