

# Enterprise Scaled Agile Domain Models

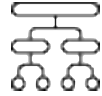
SAFe® 4.6

**Amy Silberbauer**  
Solution Architect  
Watson IoT Offering Management  
[asilber@us.ibm.com](mailto:asilber@us.ibm.com)



# SAFe 4.6 Domain Models

Click the SAFe  
configuration to see  
the domain models  
specific to that  
configuration...



Full SAFe

---



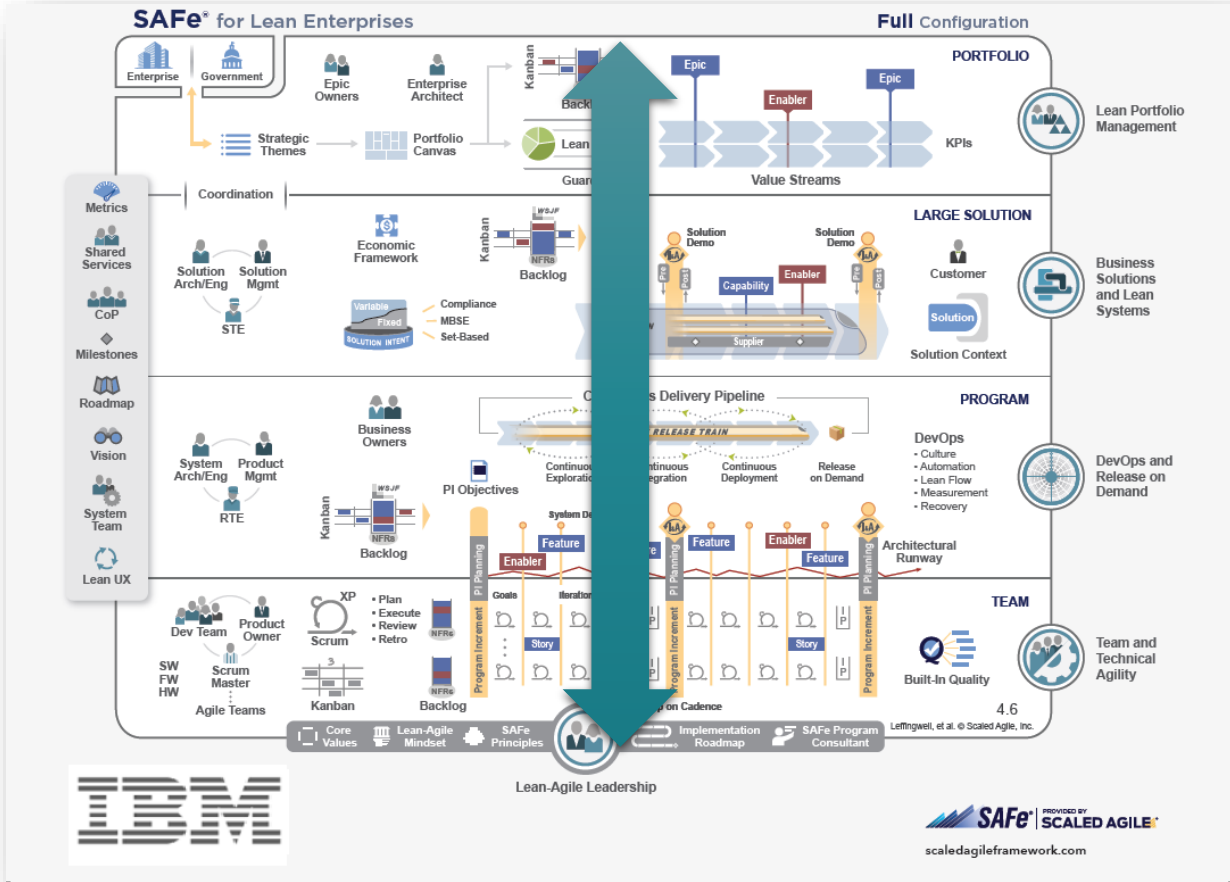
Essential SAFe

---

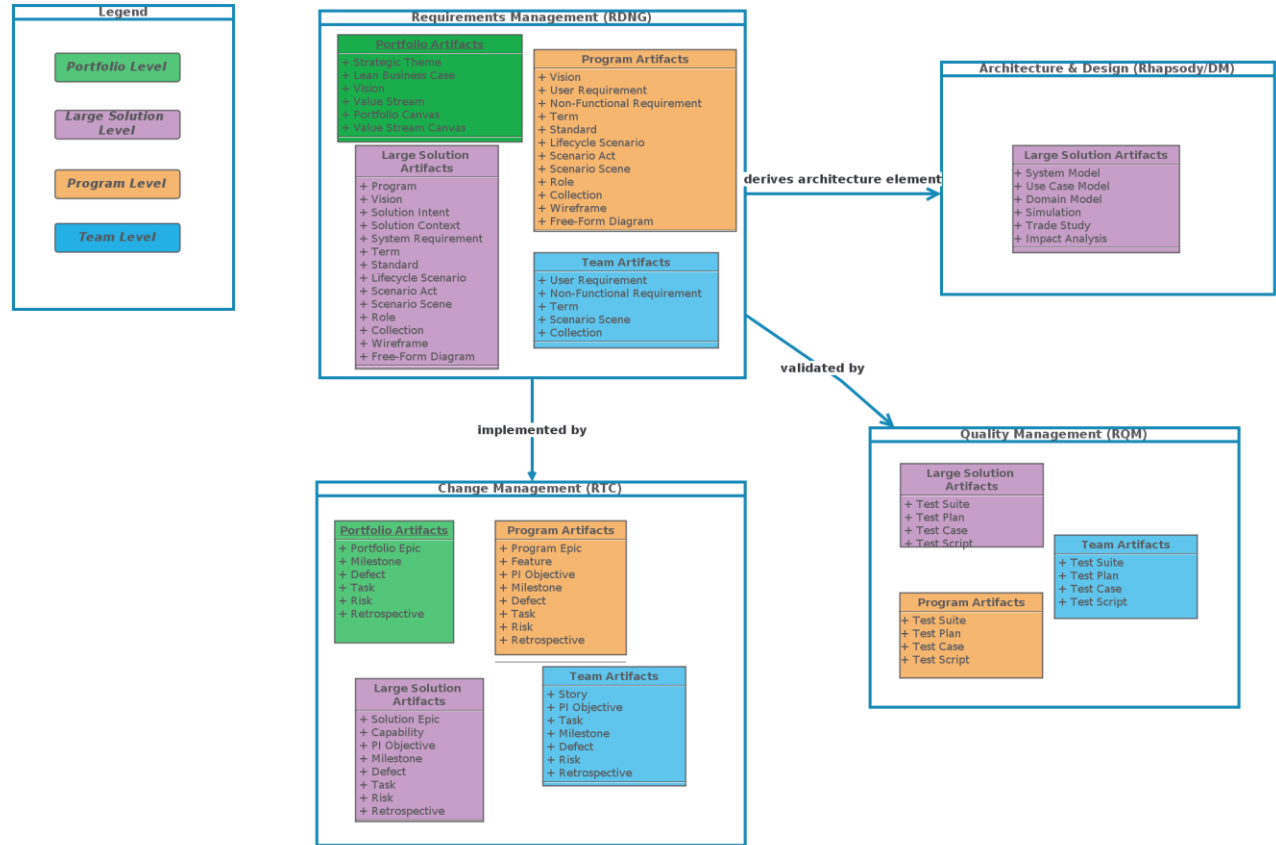
- ✓ High-Level Domain Model
- ✓ Cross-Functional Traceability Model
- ✓ DOORS Next, EWM, ETM Internal Attributes
- ✓ DOORS Next, EWM, ETM Internal Traceability
- ✓ Solution Analysis Traceability Model

# Full SAFe

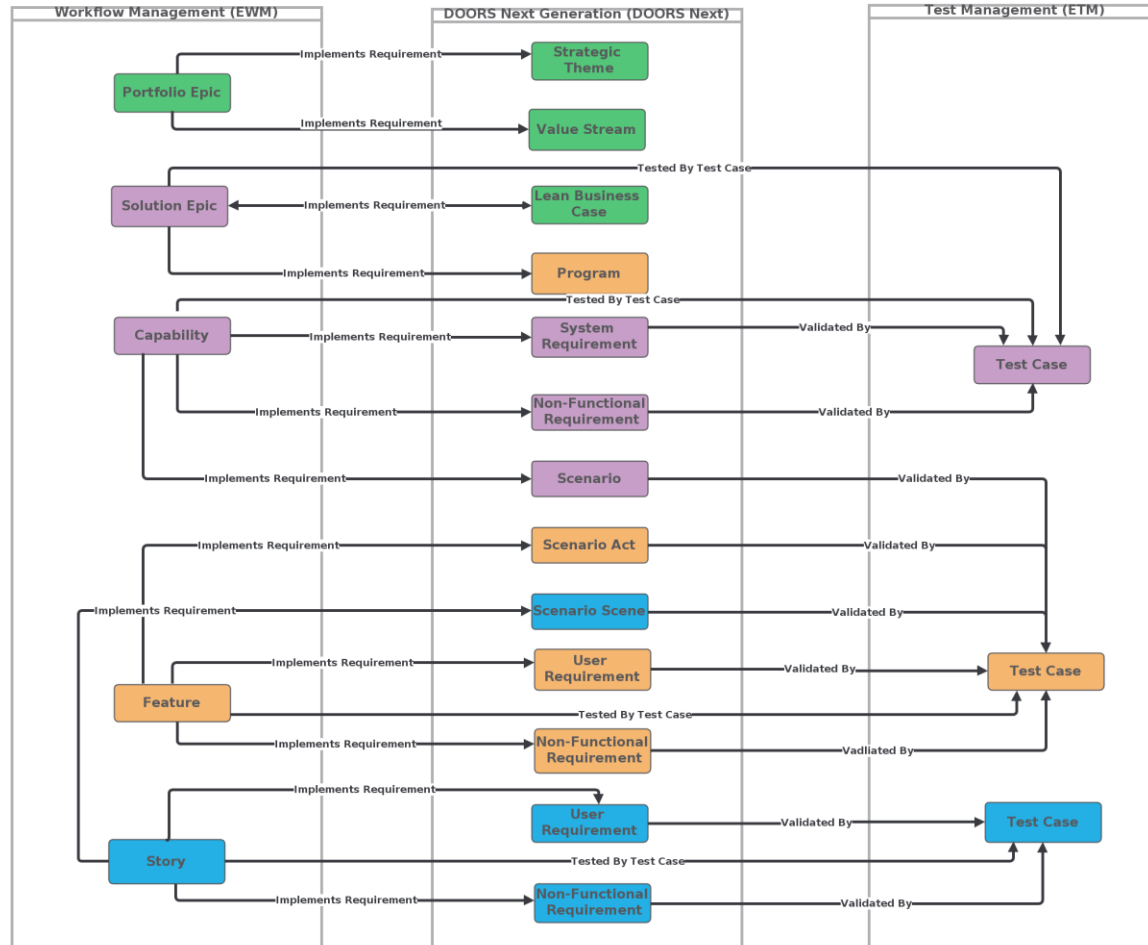
## Configuration



# High-Level Domain Model



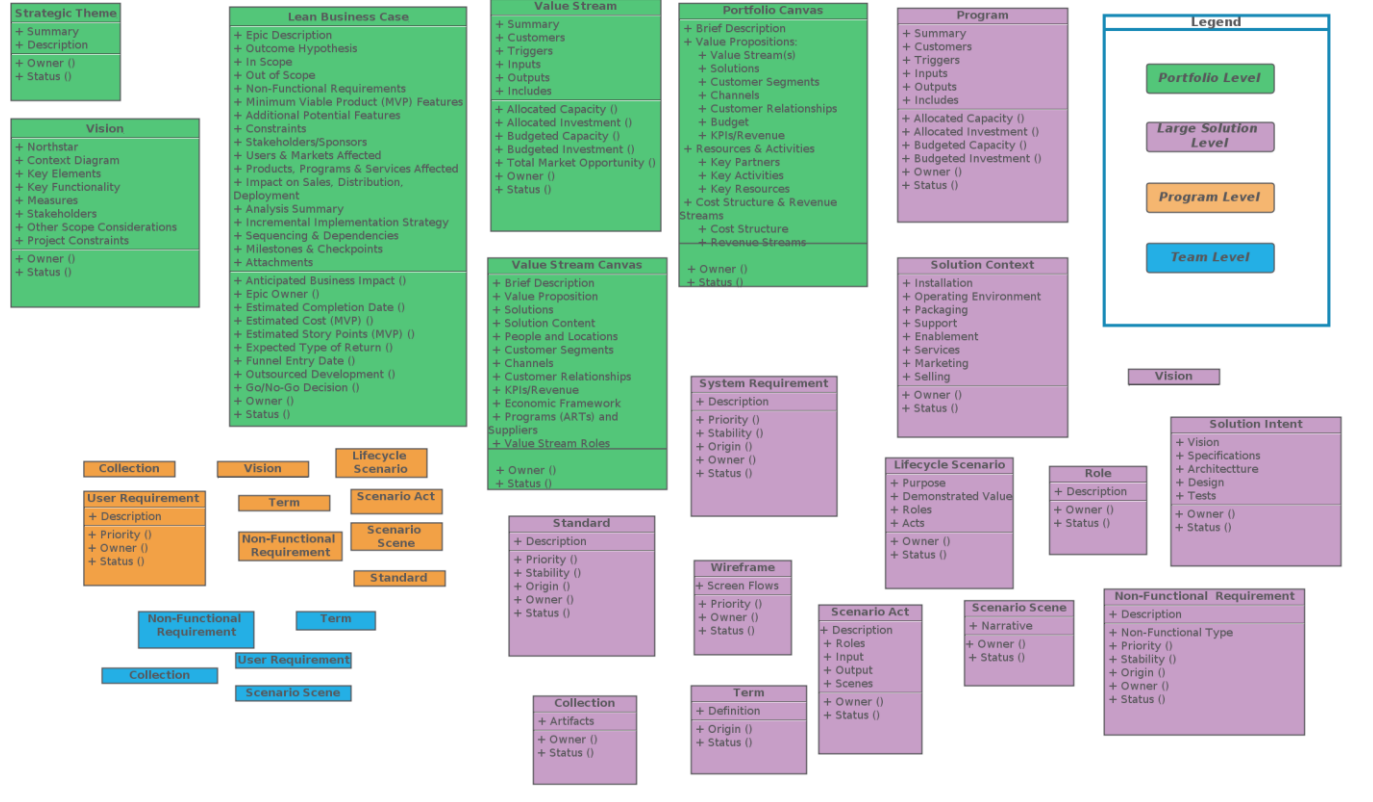
# Cross-Functional Traceability Model



Scenario Acts and Scenes may exist at multiple levels

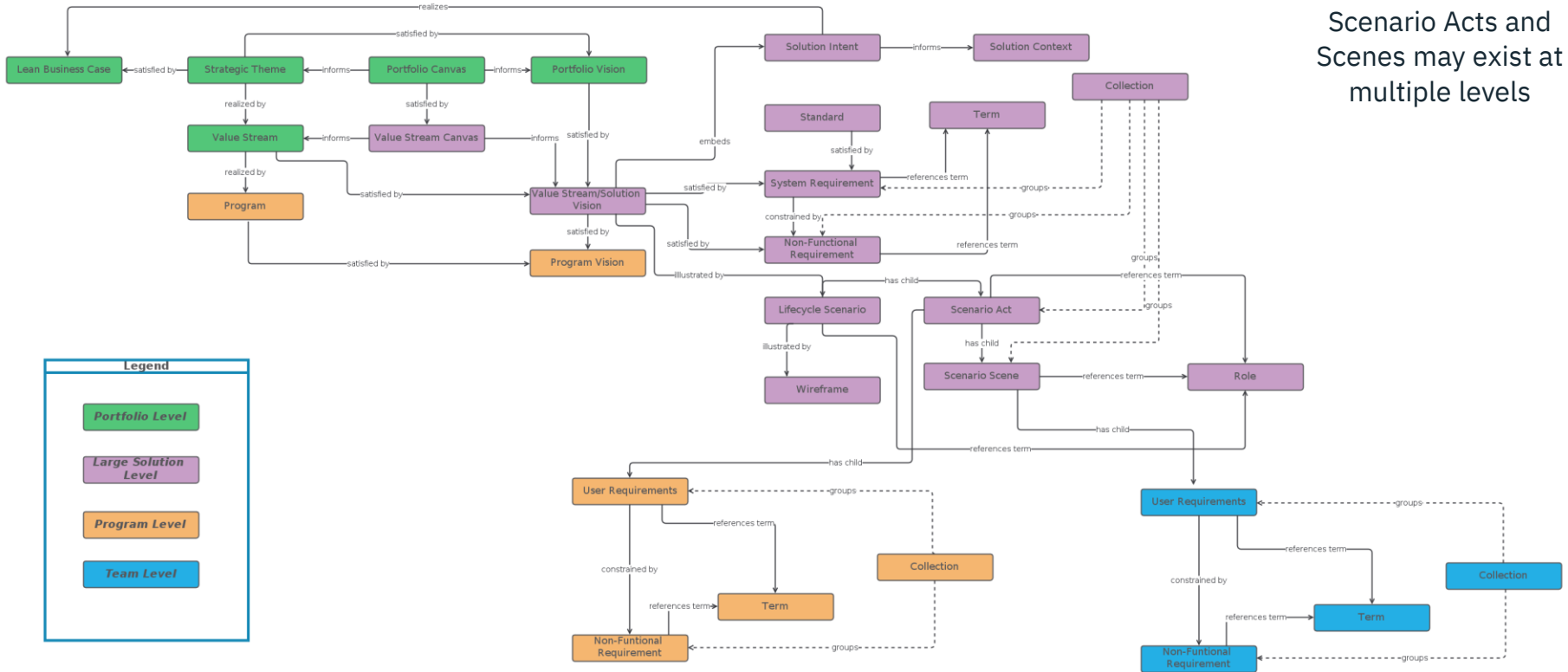
# DOORS Next Internal Attributes

## Engineering DOORS Next Artifact Attributes



# DOORS Next Internal Traceability

Engineering DOORS Next Internal Traceability



# EWM Internal Attributes

## Engineering Workflow Management (EWM) Artifact Attributes

Portfolio Epic
+ Epic Hypothesis Statement
+ Success Criteria
+ WSJF ()
+ Job Size ()
+ User/Business Value ()
+ Time Criticality ()
+ RROE ()
+ SAFe Work Type ()
+ SAFe Enabler Type ()
+ Estimated Story Points ()
+ Actual Story Points ()
+ Proposed ()

Milestone
+ Success Criteria
+ Milestone Type

Milestone
-----------

Solution Epic
+ Epic Hypothesis Statement
+ Success Criteria
+ WSJF ()
+ Job Size ()
+ Time Criticality ()
+ RROE ()
+ SAFe Work Type ()
+ SAFe Enabler Type ()
+ Estimated Story Points ()
+ Actual Story Points ()
+ Proposed ()

Capability
+ Benefit Hypothesis
+ Acceptance Criteria
+ Definition of Done
+ WSJF ()
+ Job Size ()
+ Time Criticality ()
+ RROE ()
+ SAFe Work Type ()
+ SAFe Enabler Type ()
+ Estimated Story Points ()
+ Actual Story Points ()
+ Proposed ()

PI Objective
+ Description
+ Business Value (planned) ()
+ Business Value (actual) ()
+ Achieved Value (%) ()
+ Scope

Program Epic
+ Epic Hypothesis Statement
+ Success Criteria
+ WSJF ()
+ Job Size ()
+ Time Criticality ()
+ RROE ()
+ SAFe Work Type ()
+ SAFe Enabler Type ()
+ Estimated Story Points ()
+ Actual Story Points ()
+ Proposed ()

Feature
+ Benefit Hypothesis
+ Acceptance Criteria
+ Definition of Done
+ WSJF ()
+ Job Size ()
+ Time Criticality ()
+ RROE ()
+ SAFe Work Type ()
+ SAFe Enabler Type ()
+ Estimated Story Points ()
+ Actual Story Points ()
+ Proposed ()

Story
+ Description
+ Acceptance Criteria
+ Definition of Done
+ SAFe Work Type ()
+ SAFe Enabler Type ()

PI Objective

Milestone

PI Objective

### Legend

Portfolio Level

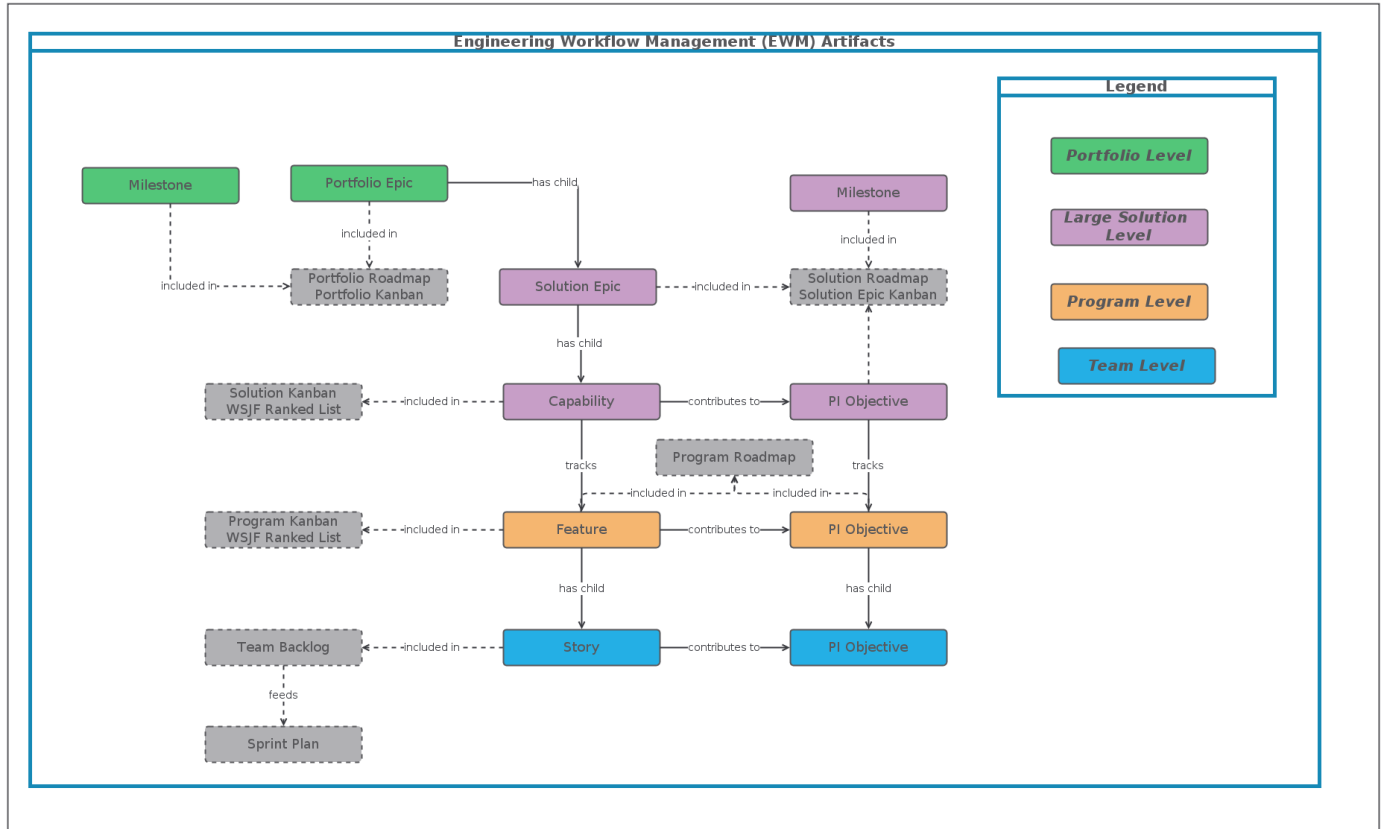
Large Solution Level

Program Level

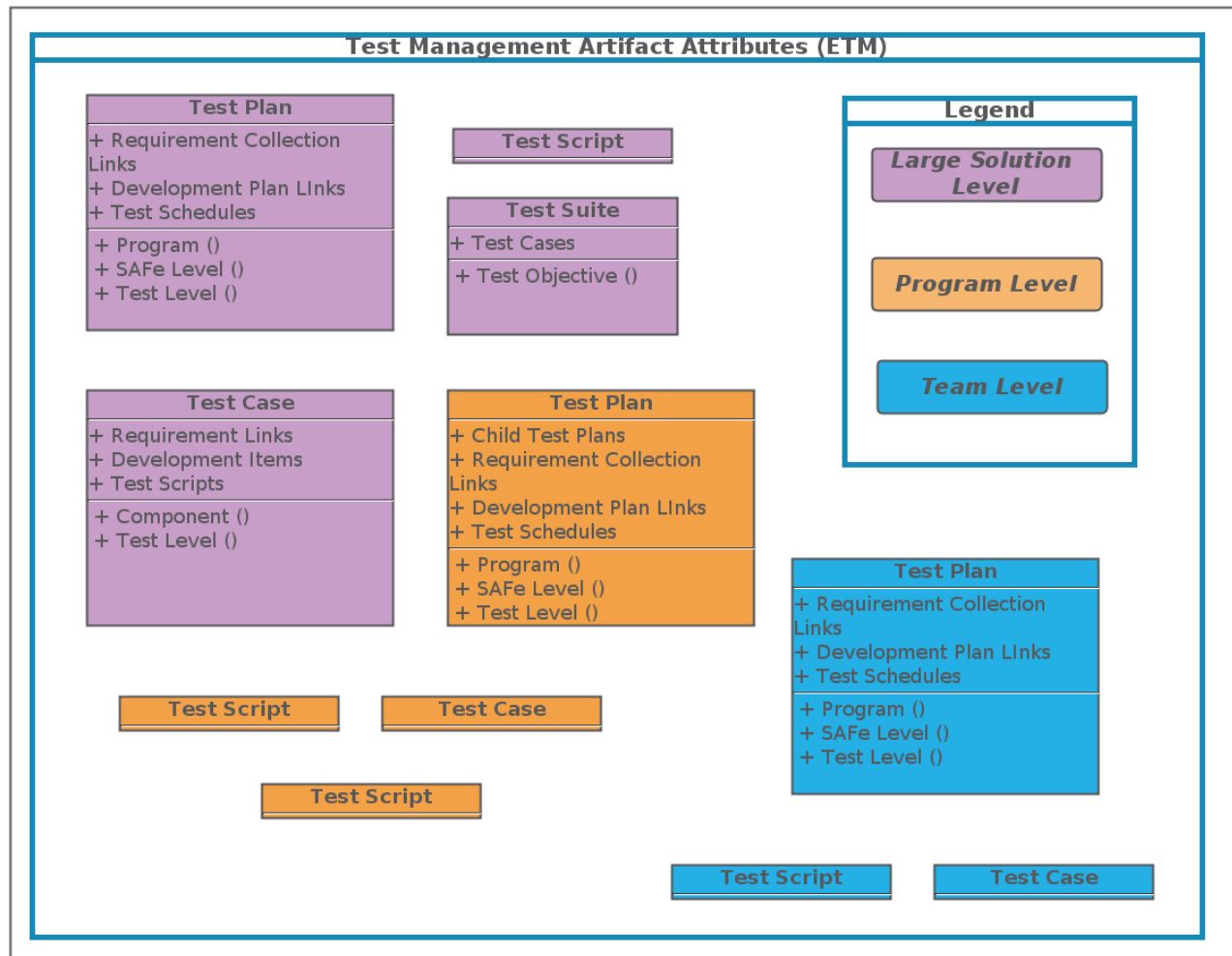
Team Level



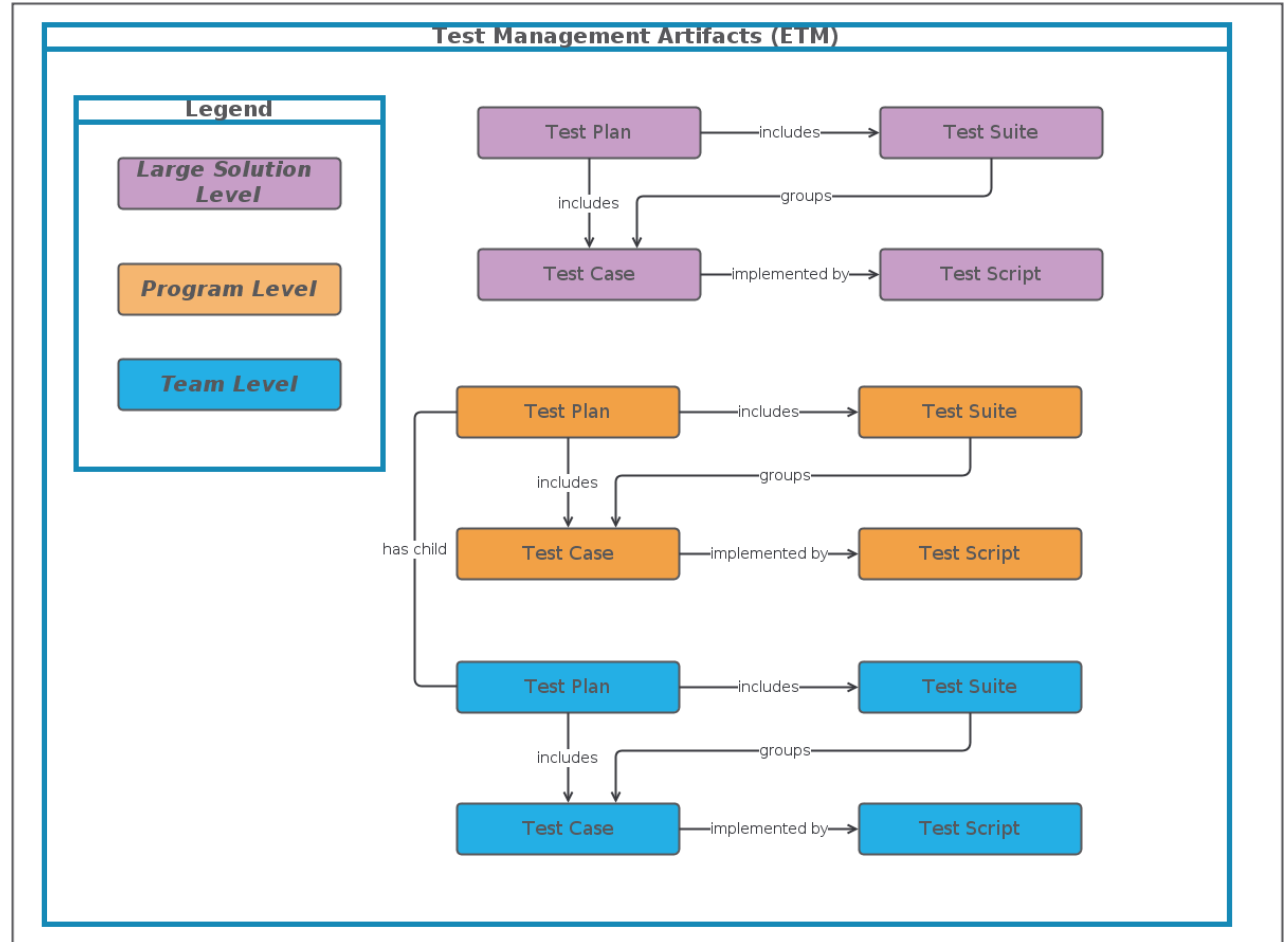
# EWM Internal Traceability



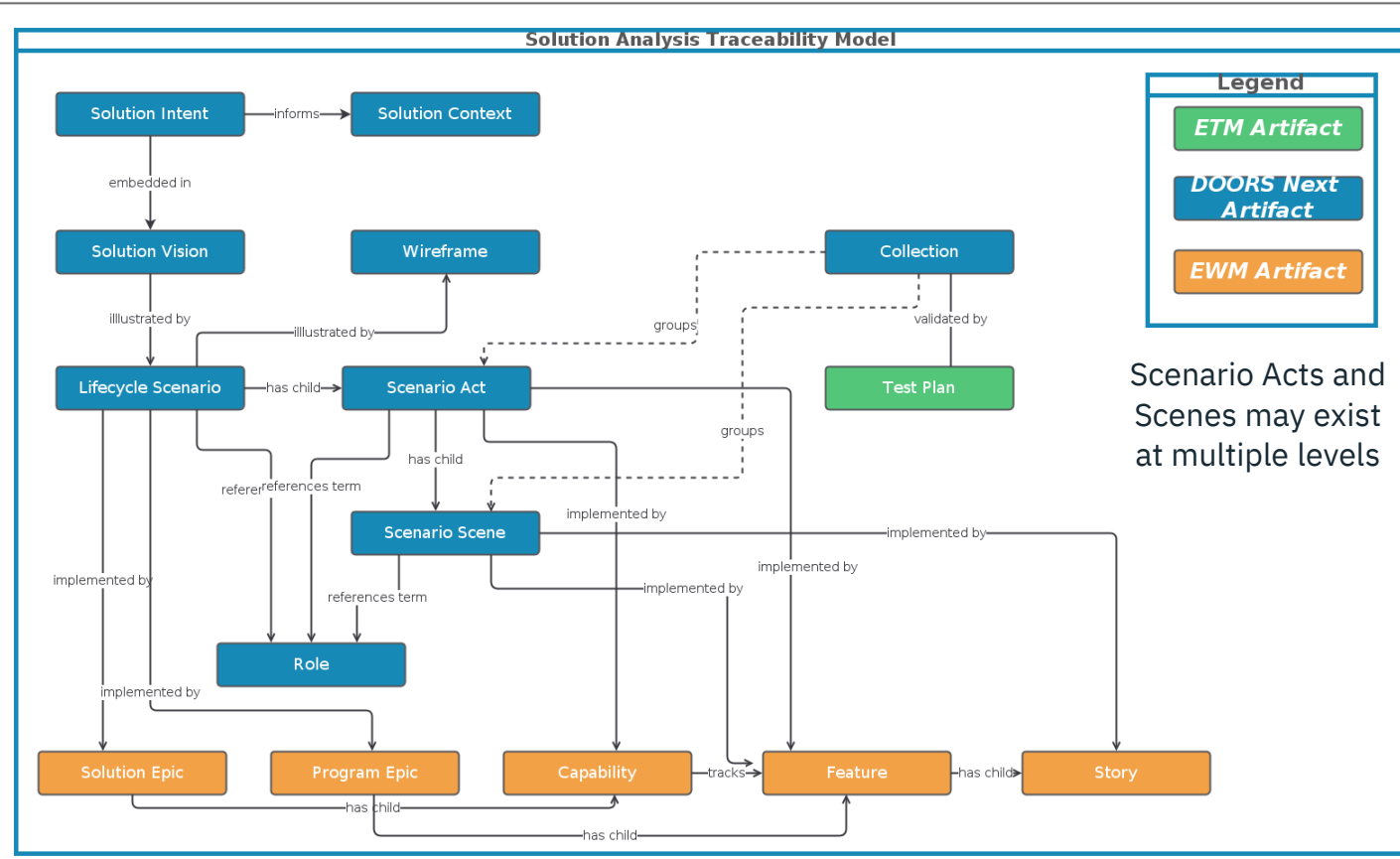
# ETM Internal Attributes



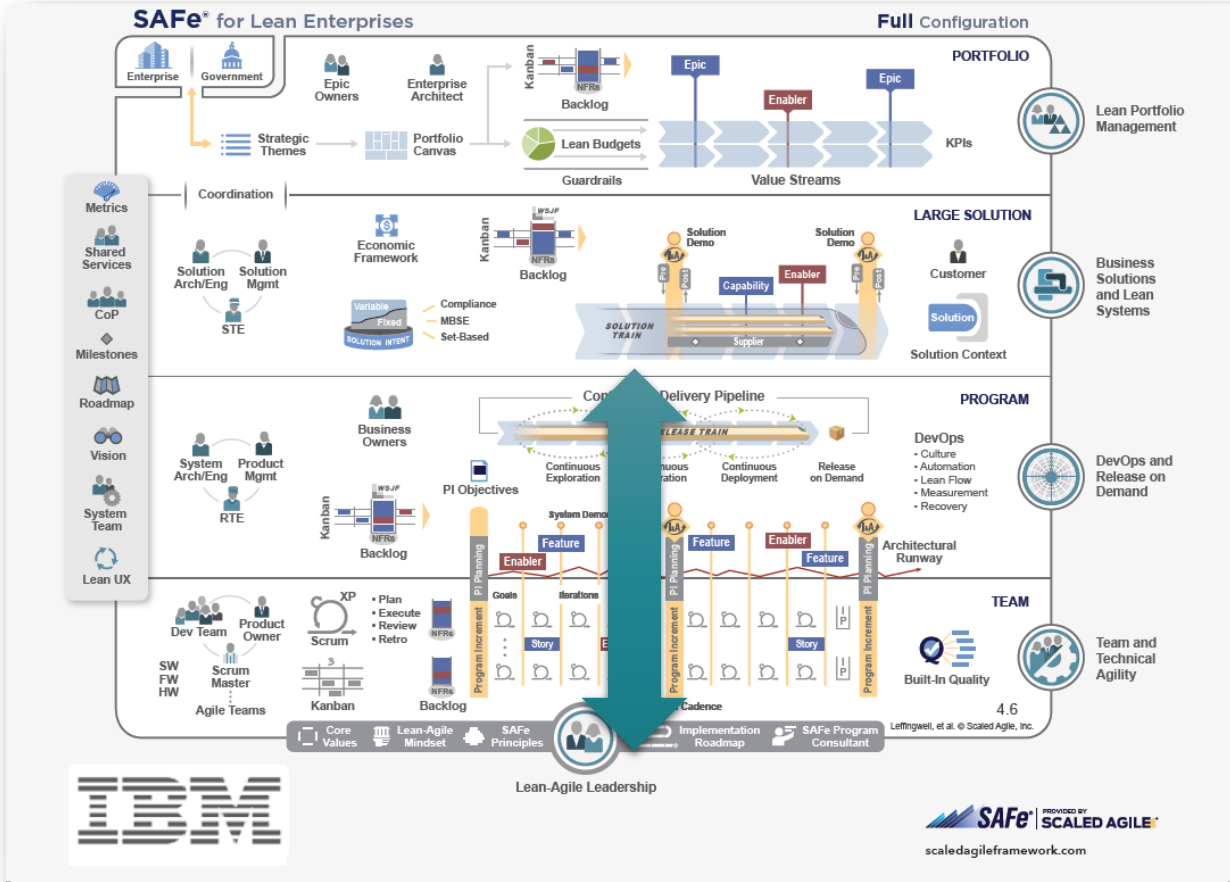
# ETM Internal Traceability



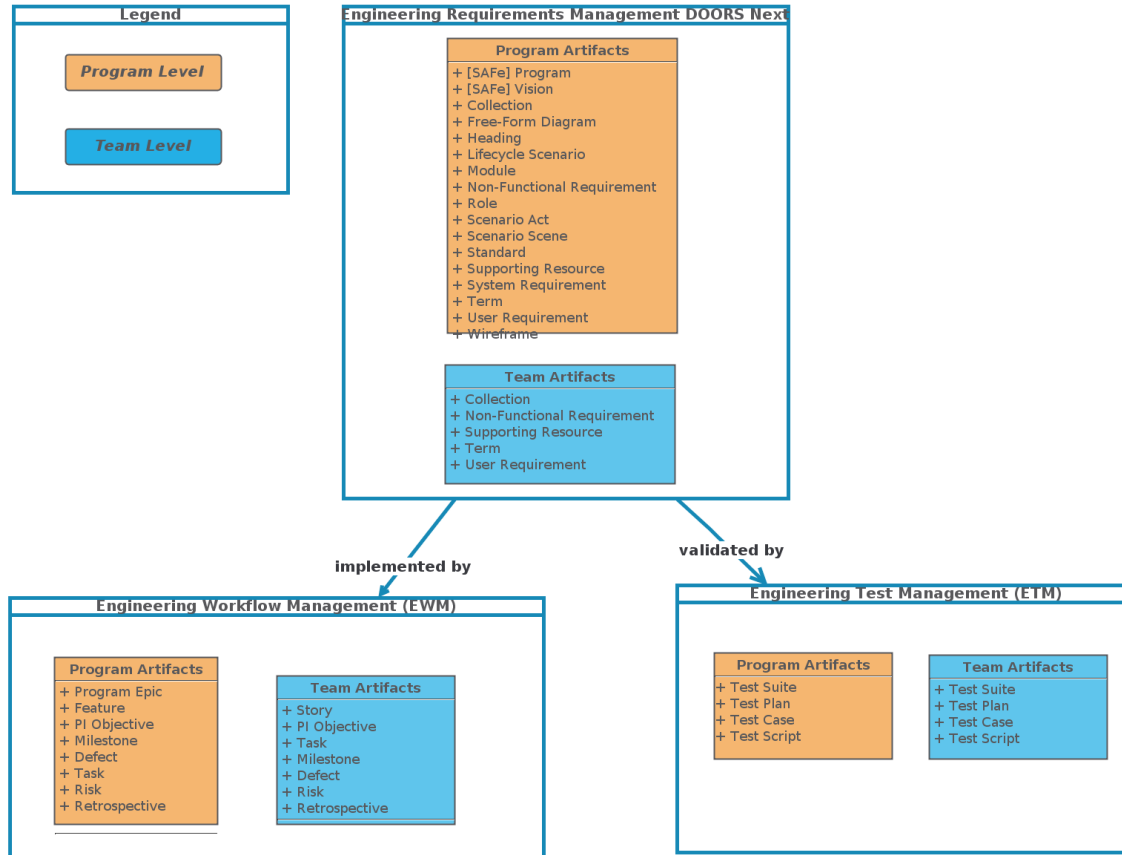
# Solution Analysis Traceability Model



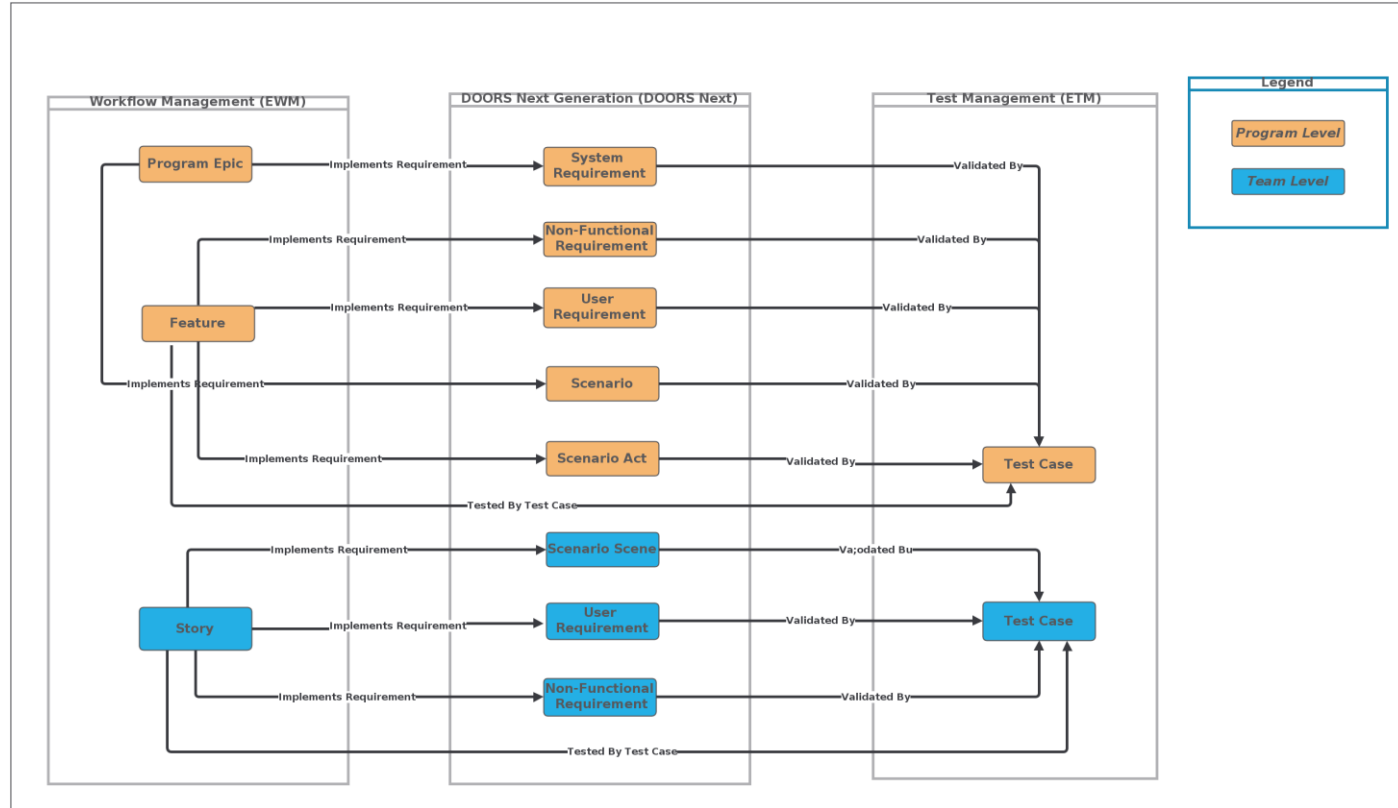
# Essential SAFe Configuration



# High-Level Domain Model



# Cross-Functional Traceability Model



# DOORS Next Internal Attributes

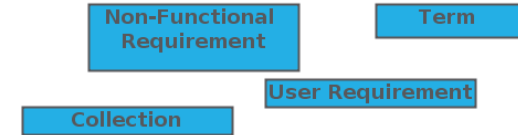
Vision
+ Northstar
+ Context Diagram
+ Key Elements
+ Key Functionality
+ Measures
+ Stakeholders
+ Other Scope Considerations
+ Project Constraints
+ Owner ()
+ Status ()

Program
+ Summary
+ Customers
+ Triggers
+ Inputs
+ Outputs
+ Includes
+ Allocated Capacity ()
+ Allocated Investment ()
+ Budgeted Capacity ()
+ Budgeted Investment ()
+ Owner ()
+ Status ()

Legend
<i>Program Level</i>
<i>Team Level</i>

Non-Functional Requirement
+ Description
+ Non-Functional Type
+ Priority ()
+ Stability ()
+ Origin ()
+ Owner ()
+ Status ()

User Requirement
+ Description
+ Priority ()
+ Owner ()
+ Status ()



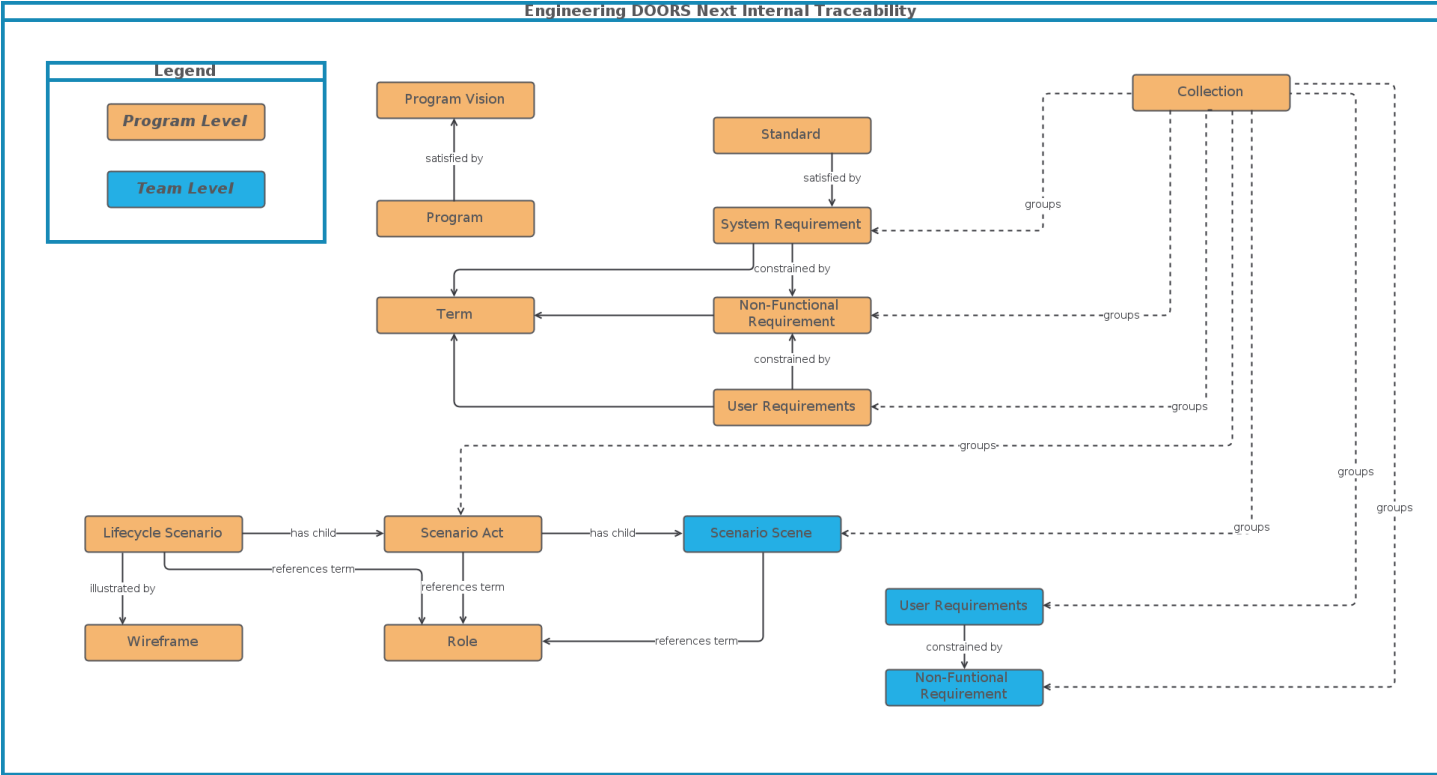
Wireframe
+ Screen Flows
+ Priority ()
+ Owner ()
+ Status ()

Term
+ Definition
+ Origin ()
+ Status ()

Collection
+ Artifacts
+ Owner ()
+ Status ()



# DOORS Next Internal Traceability



# EWM Internal Attributes

## Workflow Management Artifact Attributes (EWM)

Program Epic
+ Epic Hypothesis Statement + Success Criteria
+ WSJF () + Job Size () + Time Criticality () + RROE () + SAFe Work Type () + SAFe Enabler Type () + Estimated Story Points () + Actual Story Points () + Proposed ()

Milestone
+ Success Criteria + Milestone Type

PI Objective
+ Description
+ Scope() + Business Value (planned) () + Business Value (actual) () + Achieved Value (%) ()

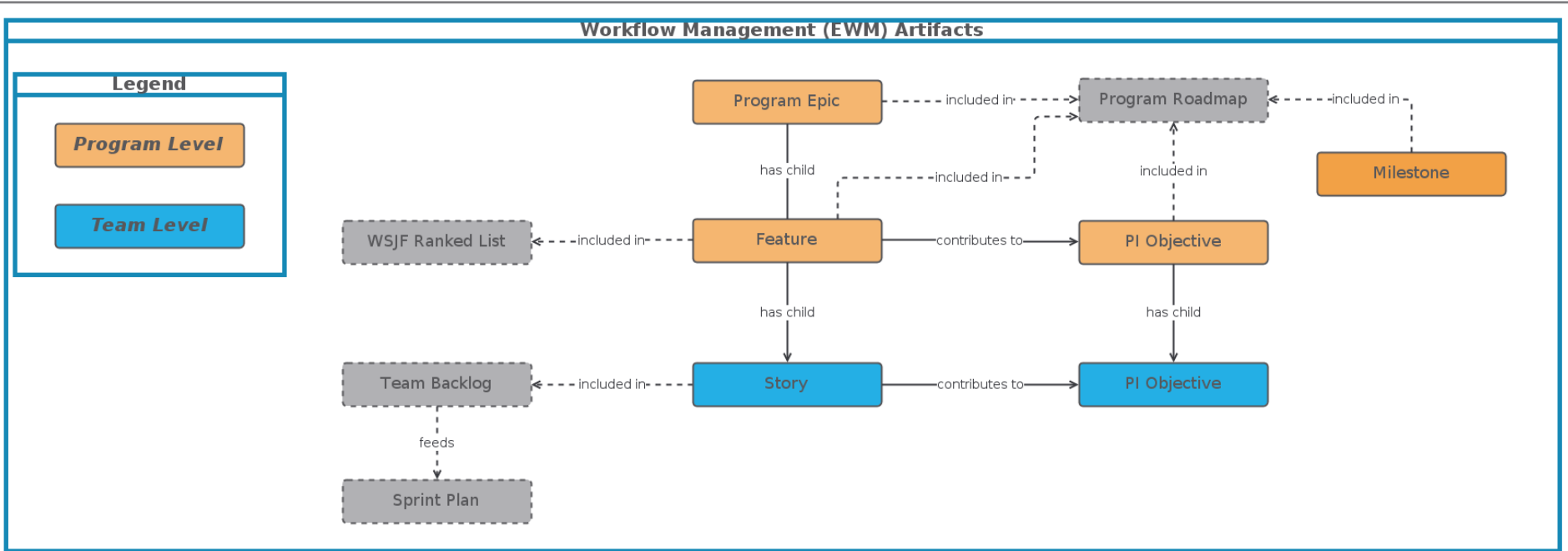
Legend
<i>Program Level</i>
<i>Team Level</i>

Feature
+ Benefit Hypothesis + Acceptance Criteria + Definition of Done + MVP
+ WSJF () + Job Size () + Time Criticality () + RROE () + SAFe Work Type () + SAFe Enabler Type () + Estimated Story Points () + Actual Story Points () + Proposed ()

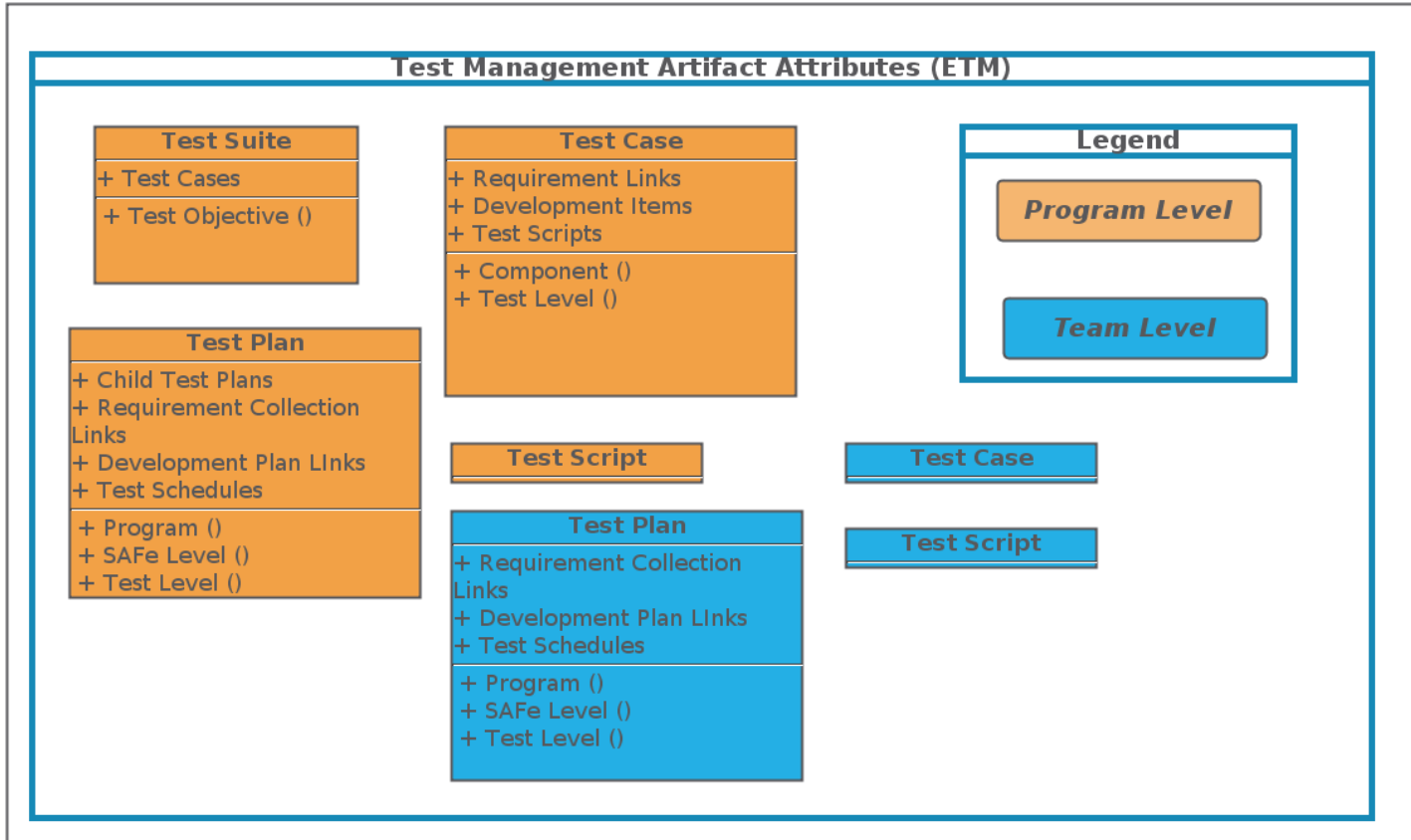
Story
+ Description + Acceptance Criteria + Definition of Done + MVP
+ SAFe Work Type () + SAFe Enabler Type ()

PI Objective

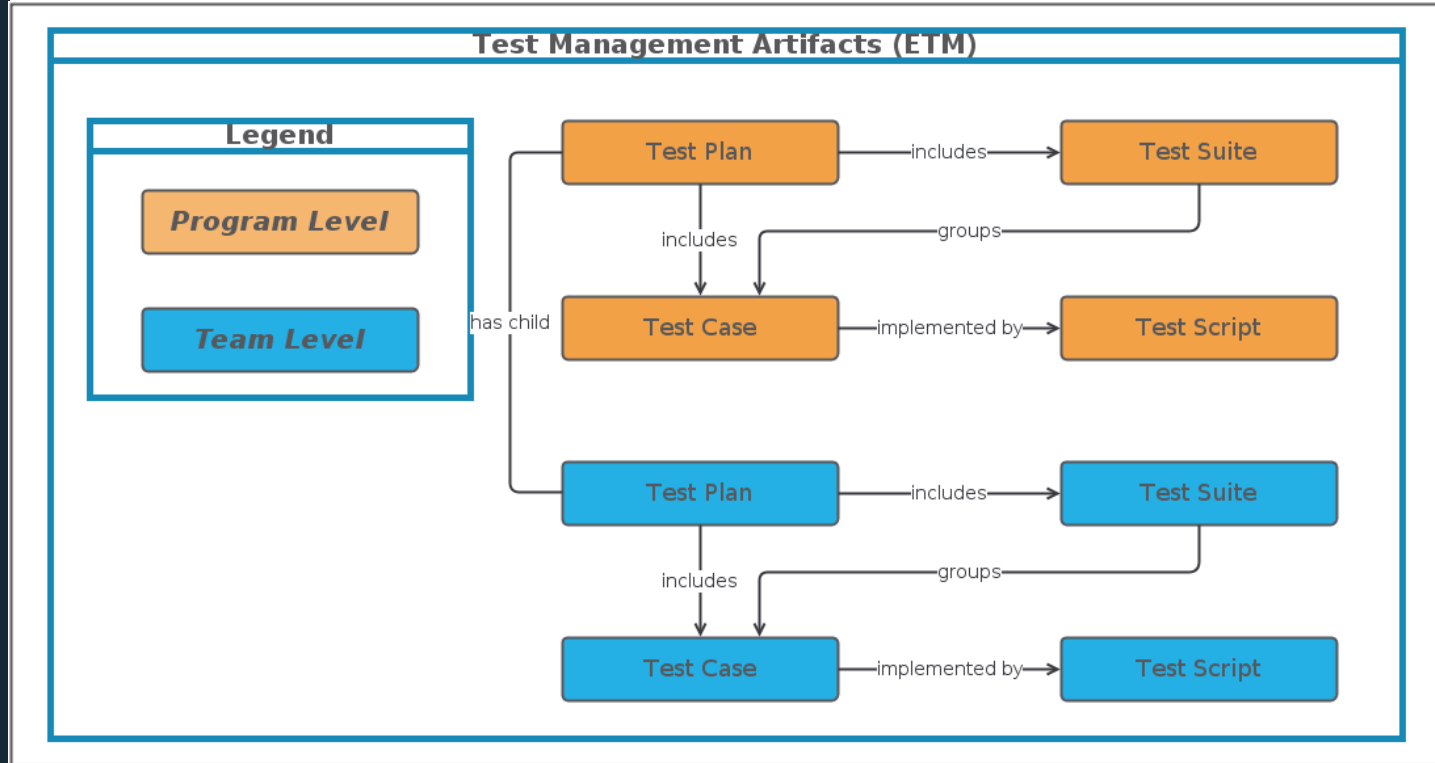
# EWM Internal Traceability



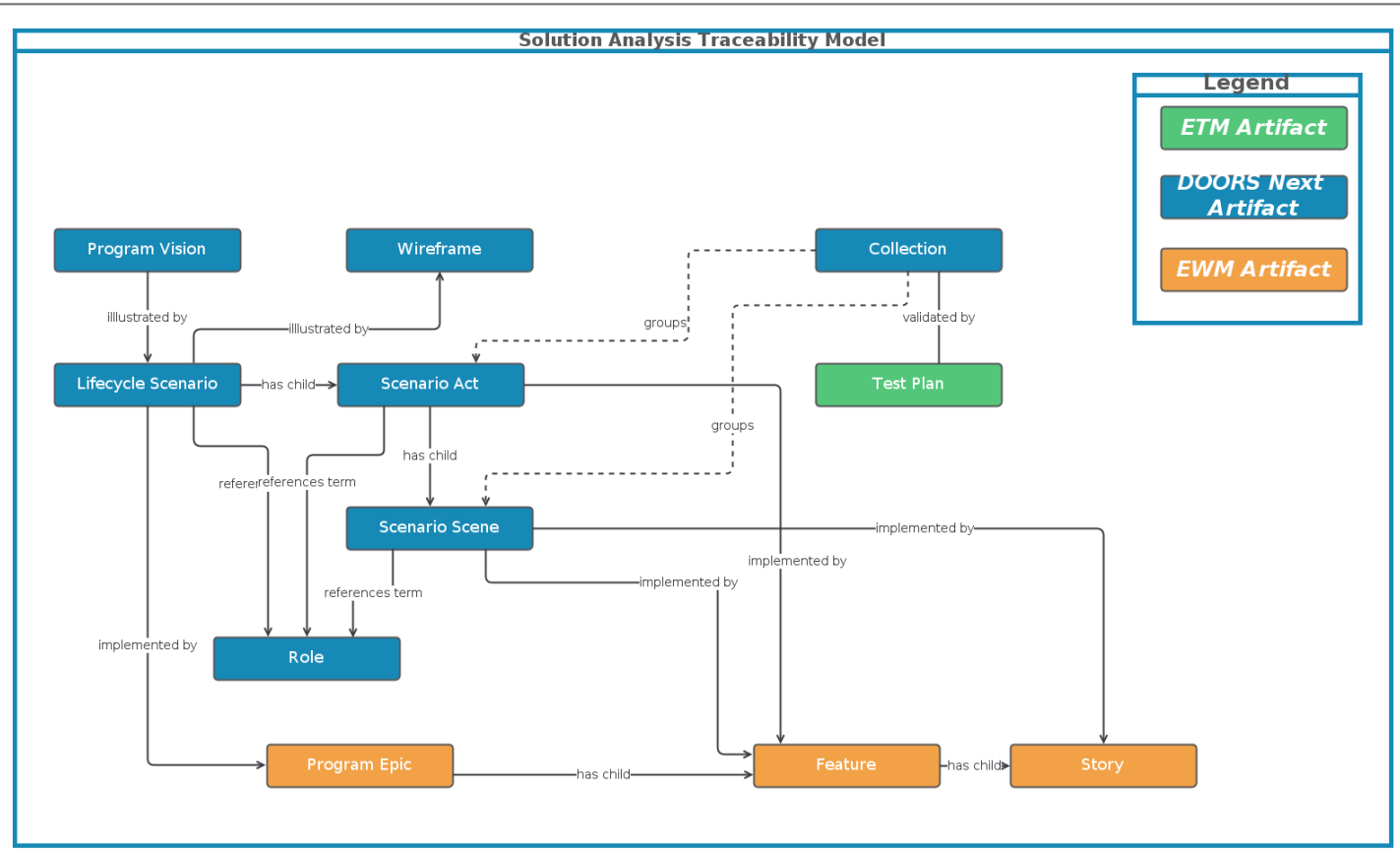
# ETM Internal Attributes



# ETM Internal Traceability



# Solution Analysis Traceability Model



# Thank you