

A word cloud with a light blue background. The central text, 'Smarter software for a smarter planet', is in a bold green font. Below it, 'Software and Systems Engineering | Rational' is also in bold green. The background is filled with various words in different shades of blue, including 'smarter', 'software', 'planet', 'IBM', 'Rational', 'systems', 'engineering', 'solutions', 'business', 'value', 'performance', 'productivity', 'collaboration', 'innovation', 'growth', 'sustainability', 'resilience', 'agility', 'scalability', 'security', 'compliance', 'risk', 'cost', 'time', 'quality', 'customer', 'employee', 'partner', 'ecosystem', 'digital', 'transformation', 'cloud', 'mobile', 'social', 'big data', 'analytics', 'artificial intelligence', 'machine learning', 'blockchain', 'internet of things', 'cybersecurity', 'automation', 'robotics', 'augmented reality', 'virtual reality', 'edge computing', '5G', 'quantum computing', 'biotechnology', 'nanotechnology', 'space exploration', 'climate change', 'renewable energy', 'circular economy', 'sustainable development goals', 'United Nations', 'World Health Organization', 'World Bank', 'International Monetary Fund', 'Organisation for Economic Co-operation and Development', 'World Trade Organization', 'World Intellectual Property Organization', 'World Tourism Organization', 'World Meteorological Organization', 'World Health Organization', 'World Bank', 'International Monetary Fund', 'Organisation for Economic Co-operation and Development', 'World Trade Organization', 'World Intellectual Property Organization', 'World Tourism Organization', 'World Meteorological Organization'.

## Be agile. Be lean. Work Together

*IBM Rational Team Concert v4.0*

- **Agile your way** – Scrum, waterfall or hybrid; adapt planning to meet your team needs and rhythm.
- **Friction free communication** by smart linking of tasks, code changes, builds and releases as you work
- **Live dashboards** - write code not status reports – live web based dashboards tell everyone the story
- **Empower developers** - Fix goofs, juggles tasks, patch in seconds, easily add or remove features
- **Runs anywhere – open platform** Works with your existing tools and data for incremental adoption



### *IBM Rational Team Concert v4.0 highlights*

- Automated high availability via clustering
- Manage plans and schedules that span multiple projects
- Finer grained security to more easily support outside suppliers and consultants
- Locate and verify changes to multiple release variants using drag and drop
- Version anything simply, from within the Windows shell
- Enhanced ISPF support and impact analysis for System z developers

NEW!

## CLM 2012 – Availability and Adoption

- ***Improve Availability, Deployment Flexibility and Upgrades***

- *High Availability with Clustering (requires WAS-ND license)*
- *N-1 client compatibility for incremental adoption*
- *Ability to rename a server (production to test, pilot to production)*
- *Cross repository process inheritance*



# CLM 2012 - Automate High Availability with Clustering

2011

2012

2013

## CLM High Availability / Clustering on WAS

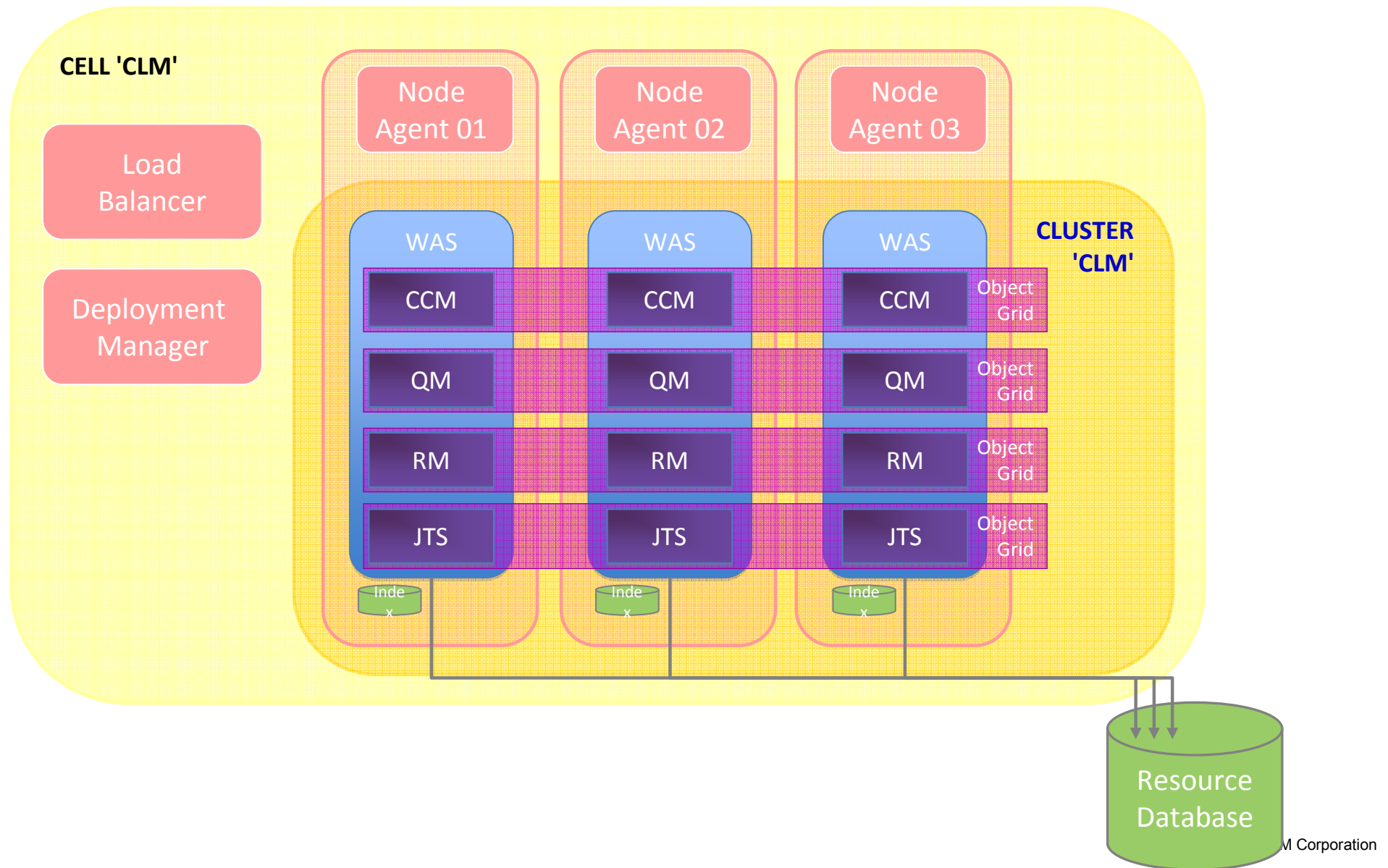
- Redundant application/JTS instances sharing central DB
- Front load balancer dispatching, provides automatic failover across the cluster
- WAS supported cluster solution is WAS ND:
  - Deployment management
  - Workload management
  - Session failover



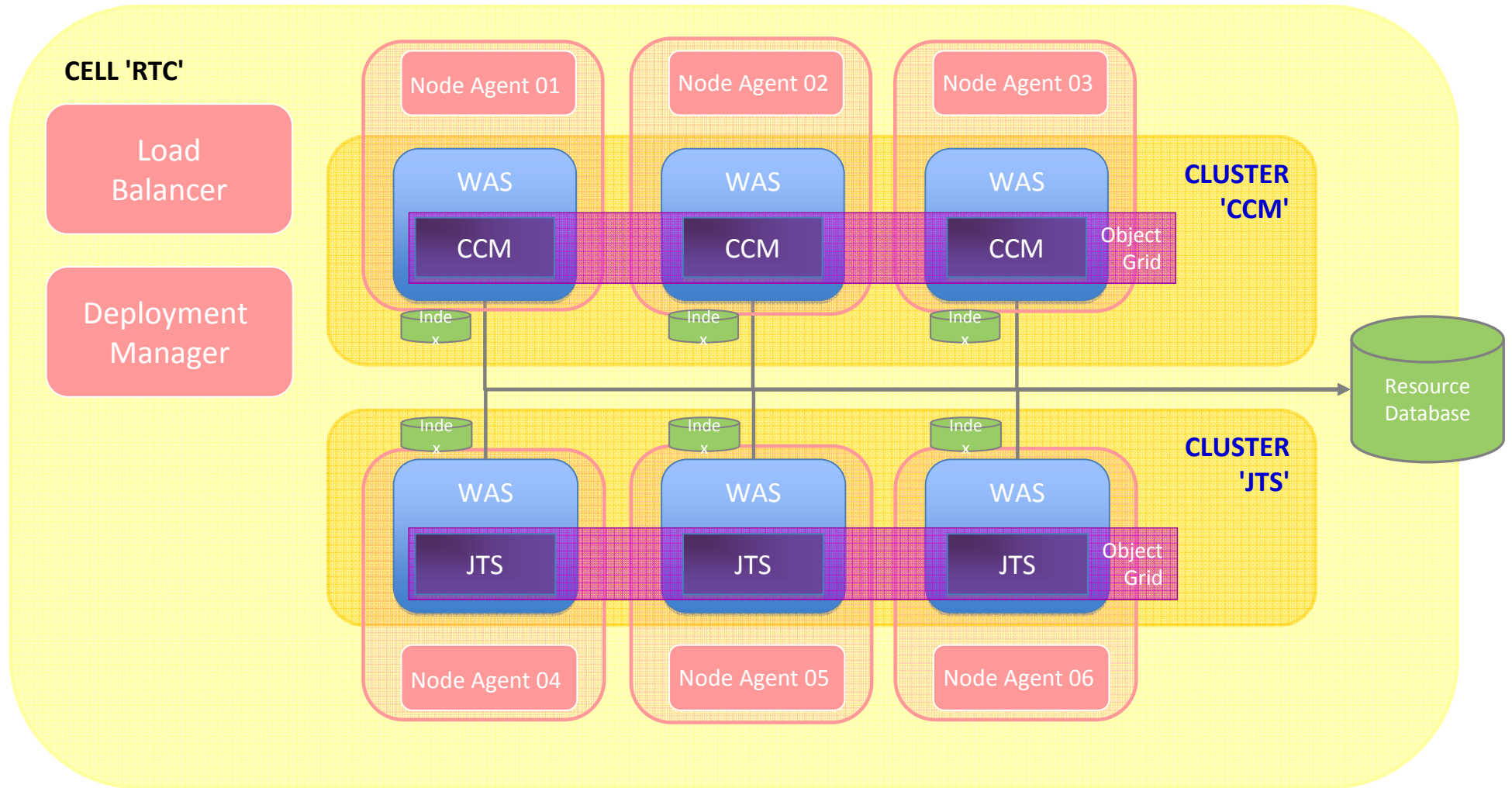
- WebSphere eXtreme Scale is the technology Jazz uses for a shared look-aside cache – Object Grid – This is bundled for use with CLM 2012 applications.

**Prerequisite:** Will require licensed WAS-ND (which is not bundled with CLM 2012) Also will require a freely available feature key to activate capability

## Clustered CLM 4.0 in WAS ND – “all-in-one” topology



## Clustered RTC 4.0 in WAS ND – “distributed” topology





## CLM 2012 - I can upgrade in stages, rename a pilot/test server and share process across RTC repositories

2011

2012

2013

- Support rolling upgrade capability for CLM
  - I can upgrade one project at a time
    - Upgrade my Jazz Team Server to 4.0 and support both RTC 3.0.1 and RTC 4.0 clients
  - I can upgrade one CLM application at a time
    - Allow RTC, RQM, RRC to upgrade incrementally
- Support Server URL Rename
 

Request feature key to support

  - Support server URL rename initial use case
    - Production to Staging.
    - Pilot to Production\* (specific rqts)
- Cross Repository Process Inheritance
  - I can share a project's process template across multiple JTS servers
  - Today this sharing can only occur in RTC 3.x on the same RTC/JTS repository



## RTC 4.0 – Planning Enhancements

- ***Planning Enhancements***

- *Planning Across Multiple Project Areas*
- *Kanban Taskboard*
- *Improved MS-Project Import and Re-import*





# RTC 4.0 - Now I can track what's going on across projects



2011

2012

2013

## ■ Planning Across Projects

- Master Plan tracks cross cutting tasks
- See a schedule roll-up of tasks

The screenshot displays the Rational Team Concert (RTC) interface. On the left, the 'Planned Items' tab is active, showing a list of tasks under a 'Summary' header. The tasks include:

- Wrong assumption about booleans: '1 != false'
- assertThat fails with Class tests (documentation problem)
- timeout doesn't work properly for >=2 cases in junit4.3?
- As user I want to get multiple project involved
- The product line should support clustered environments
- 10: Who's responsible to deploy in maven central repository
- 14: Tree hierarchy not created correctly
- 11: No download link to latest version
- 12: timeout doesn't work properly for >=2
- 13: Tests on protected methods fail

On the right, the 'Master Plan' is displayed. It shows 3 items: 3 open, 0 closed, and ends in 29 days. The 'Plan Details' section includes:

- Owner: Master
- Iteration: Release 1.0 [8/29/11 - 10/8/11]
- Plan Type: Cross Project Plan (highlighted with a red circle)
- Include All Items (checked)

Below the 'Master Plan' is a 'Project Schedule' view. It shows a 'Tree' view of the schedule, with a red circle highlighting the 'Tree' and 'Contributes To → Tracks' options. A tooltip is visible over the 'Tree' view, showing the date range 'Sep 5, 2011 9:00:00 AM - Sep 5, 2011 11:00:00 AM' and the message 'Using the Start and End Date of Snapshot 'Planned 1''. A link 'Open Schedule...' is also present.

## RTC 4.0 - Are we optimizing the flow of work?



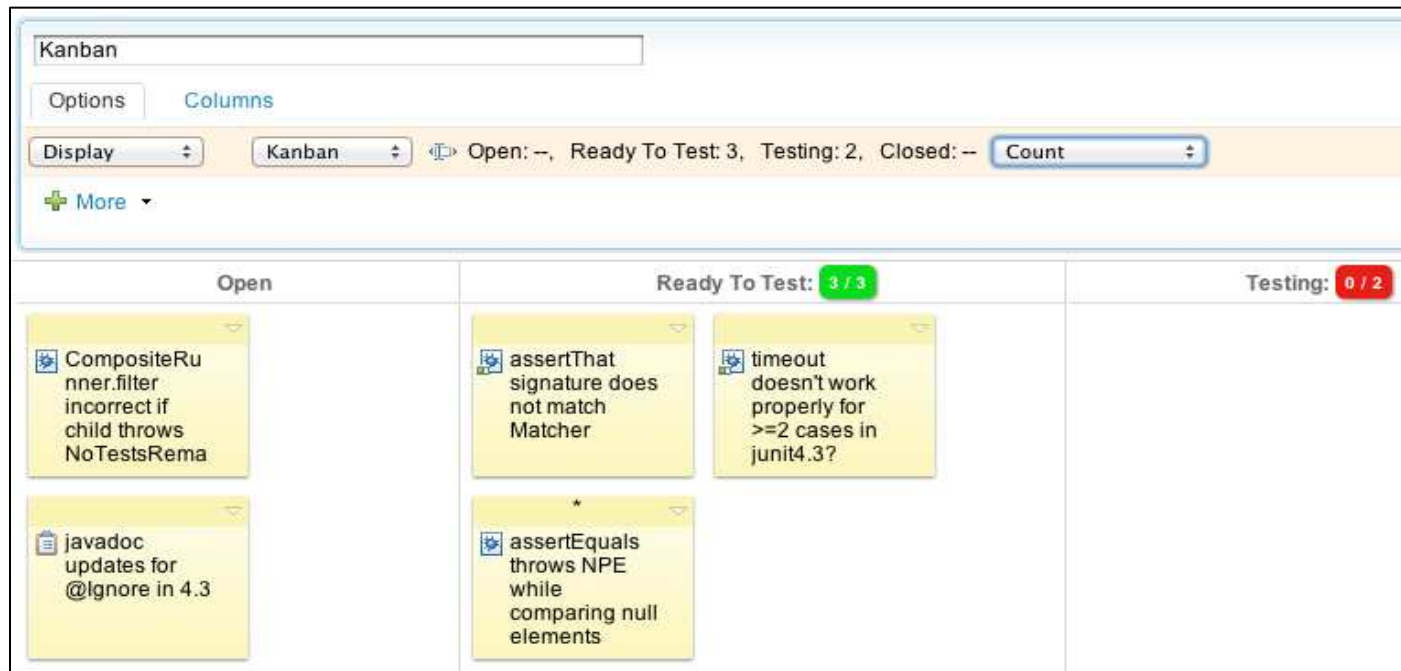
2011

2012

2013

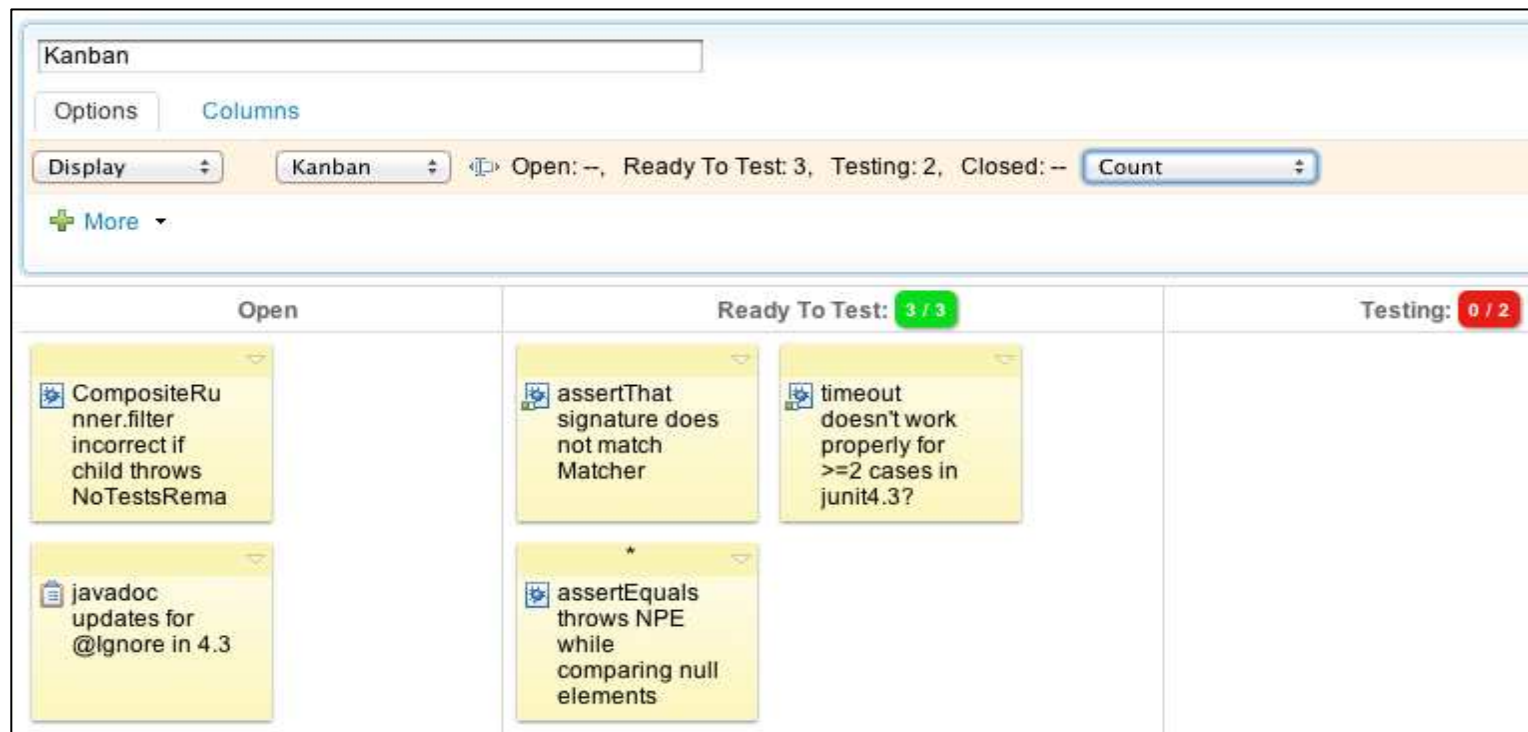
### ▪ New Kanban Taskboard

- Where is capacity available?
- Am I exceeding my desired limits? Customize limits to reflect ideal state.



## What are the benefits of Kanban?

- **Allow teams to set “work in process” limits and visualize the flow of work**
  - Where is capacity available? Am I exceeding my desired limits?
- **Helps to optimize the ideal flow of work through the system using a “pull” model**
  - For example: “Idle” resources creates inefficiency, we might encourage testing to focus their efforts to address the work backlog in the “ready to test” state below.



## RTC 4.0 – Improved MS-Project Import, Re-Import, and Export



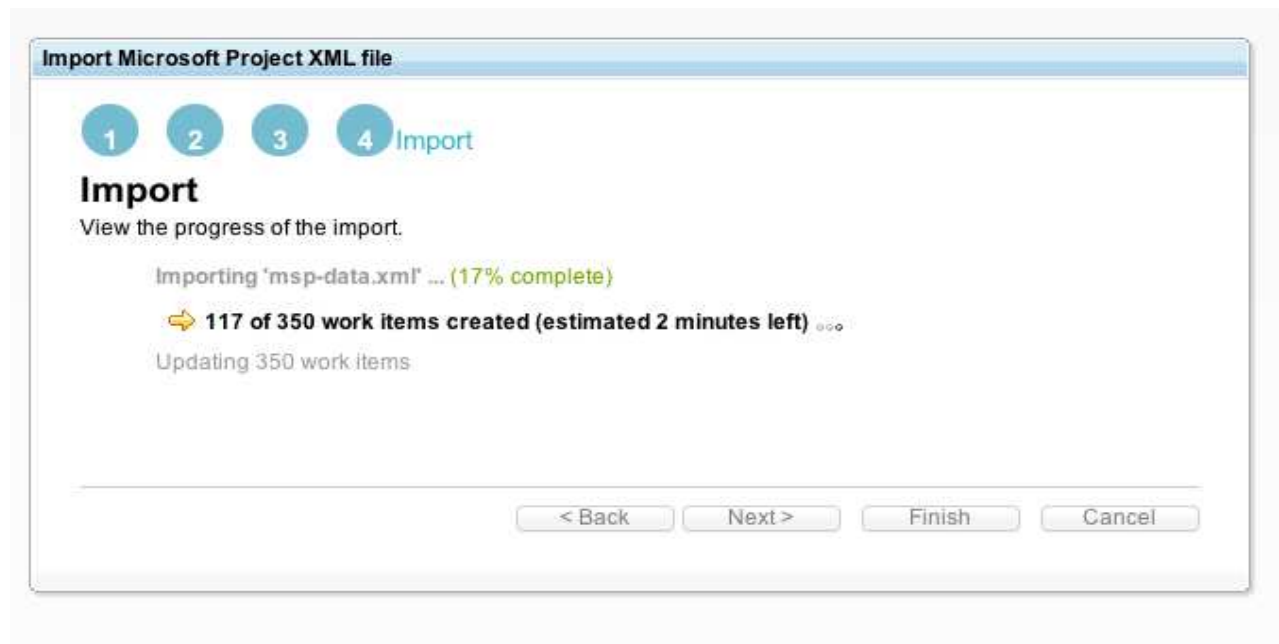
2011

2012

2013

### ▪ New or Improved Use Cases

- Import large files and let me know the progress
- Re-import and update only the new tasks
- Export RTC Status back to a clean MS-Project Plan



## RTC 4.0 – Enterprise Work Item Enhancements

- **Enterprise Work Item Enhancements**

- *Flexible Access Control Groups for Work Item Read Permissions*
- *Variables in Work Item Queries*
- *External Data Set Providers (HTTP Service)*



## RTC 4.0 – I can manage WI access control across projects, team areas and users to better support contract teams and suppliers



2011

2012

2013

### Flexible read access control for Work Items

- Access groups define the scope.
- An access group is a collection of project areas, team areas, and users. They have a name and description and can be shared at various levels (the entire repo, a project area, a team area, etc.)
- For example: You could make a work item visible to “These two team areas and these two other users” by creating an access group which included two team areas and two contributors.

Create an Access Group

Configure the details of the access group.

Name: \*

Customers and Team Business Recovery Matters

Description:

Group of customers and Business Recovery Matters Team

Members: \*

Business Recovery Matters

Curtis

Deb

Marco

Tanuj

Ursula

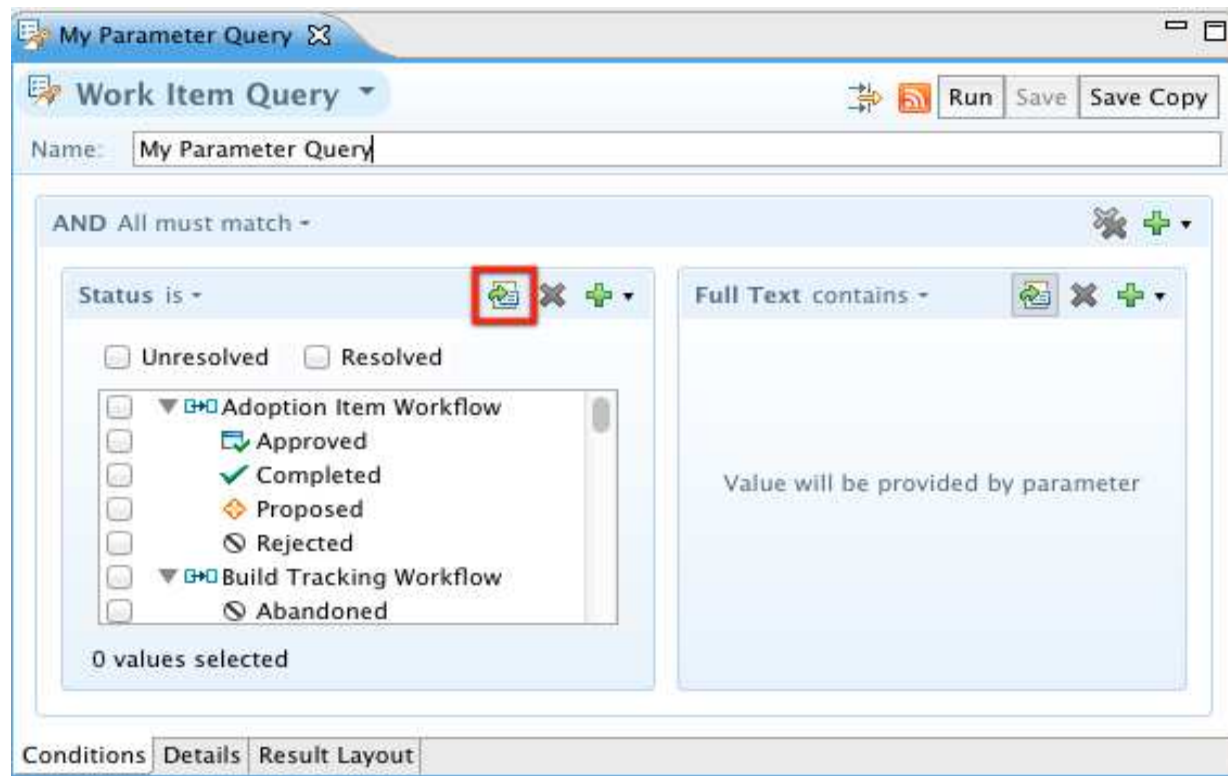
Save

Cancel



## RTC 4.0 – Variables in Work Item Queries

- Input Variables in Work Item Queries: Work item queries can now contain input variables, i.e. values for query conditions that can be specified differently for each execution of the query. Allows you to manage fewer queries across a project.



## RTC 4.0 - Work Item Customization – External Data Providers

- External Data Source Value Set Providers: “I want to fetch attribute values from an external data source, such as a HTTP REST service so I can always have the most up to date data”
- This example shows a configuration for fetching and extracting car makes.

**Attribute Customization**

Define default values, value sets, calculated values and validation rules.

☐ Final (ignore customization of this data in child project areas)

**Value Sets**

- CountryProvider
- MovieProvider
- CarMakeProvider**

**Details**

Name: CarMakeProvider

Provider: HTTP Filtered Value Set

**Configuration**

URL to request values:

XPath expression to filter elements:

XPath expressions that define columns ('|' delimited):

Column identifiers ('|' delimited):

Output format (two column example: \${0}: \${1}):

Authentication Method:

URL for form based authentication:

User name parameter name for form based authentication:

Password parameter name for form based authentication:

Credential identifier to use with the authentication service:

Username:

Password:

☐ Ignore invalid SSL certificates

[Open Help](#)

Configure the external data source

Now available as a filtered value picker

**Select a Value**

Filter:

Values:

- Dacia
- Daewoo
- Daihatsu
- Datsun
- DeTomaso
- Delorean
- Dkw
- Dodge

**i** 8 entries found

## RTC 4.0 – Advanced SCM

### ▪ **Advanced SCM**

- *Deletion and Artifact Level Read Permissions*
  - Provide read permissions at the versioned artifact granularity in SCM
  - Permanently delete files (Administrators only)
- *More Flexible Workspace and Load Management:*
  - *Check-in History to easily revert to any checked-in version*
  - *Save and Re-load load rules from files*
- *Variant Management:*
  - *Where have my changes flown? (Locate Change Sets Editor)*



# RTC 4.0 – I can control SCM permissions at the file/folder level, control how files get loaded and locate changes across streams.

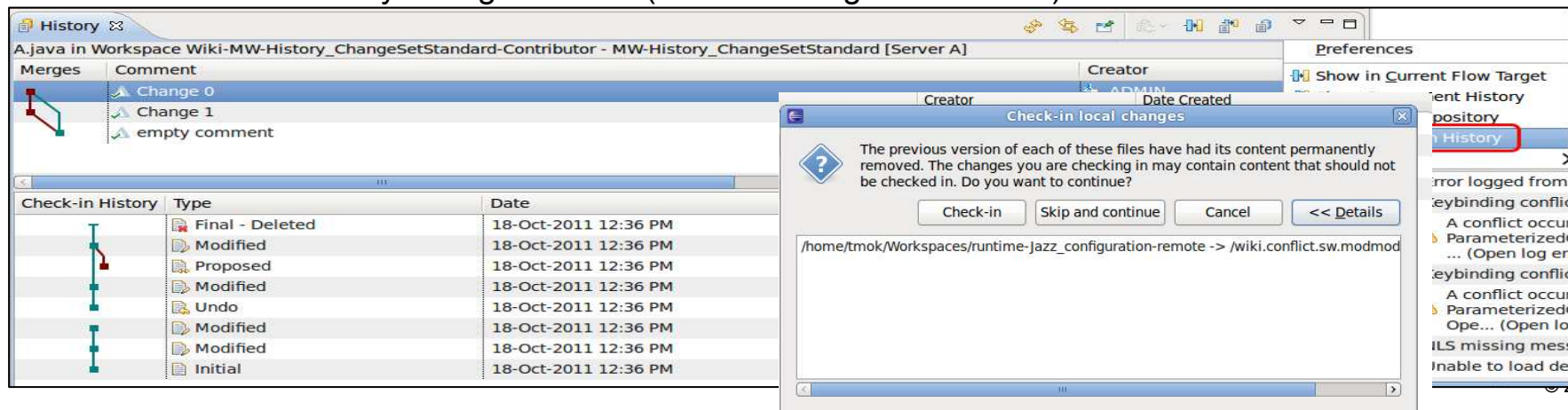
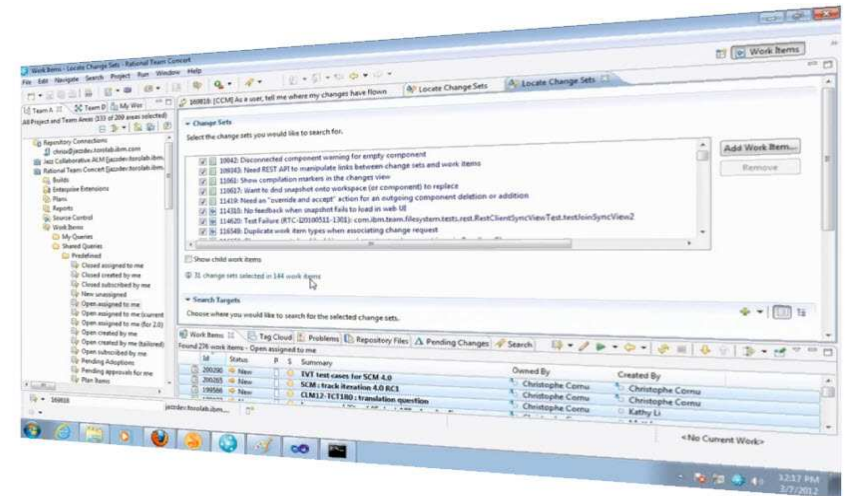
2011

2012

2013

## Advanced SCM

- Deletion and Artifact Level Read Permissions
  - Provide **read permissions** at the versioned artifact granularity in SCM
  - Permanently **delete files** (Administrators only)
- More Flexible Workspace and Load Management:
  - Check-in History to **easily revert** to any checked-in version
  - Save and Re-load load rules from files
- Variant Management:**
  - Where have my changes flown? (Locate Change Sets Editor)



## RTC 4.0 – Check-in History – easily revert to any version

- Check-in history now handles versioned artifact deletion in the UI (web, Eclipse, VS)
- Easily revert to any previously checked-in version in your workspace

The screenshot shows the Rational Software Architect (RSA) interface. The top pane displays the 'History' view for a file named 'A.java in Workspace Wiki-MW-History\_ChangeSetStandard-Contributor - MW-History\_ChangeSetStandard [Server A]'. It lists three changes: 'Change 0' (created by ADMIN), 'Change 1' (created by ADMIN), and 'empty comment' (created by ADMIN). The bottom pane shows the 'Check-in History' view, which lists various types of changes (Final - Deleted, Modified, Proposed, Undo, Initial) along with their dates and creators. A 'Check-in local changes' dialog box is open in the foreground, displaying a warning message: 'The previous version of each of these files have had its content permanently removed. The changes you are checking in may contain content that should not be checked in. Do you want to continue?'. The dialog box has buttons for 'Check-in', 'Skip and continue', 'Cancel', and '<< Details'. The background shows the 'Preferences' dialog box with the 'Show Check-in History' option checked.

Merges	Comment	Creator
Change 0		ADMIN
Change 1		ADMIN
empty comment		ADMIN

Check-in History	Type	Date	Creator	Date Created
	Final - Deleted	18-Oct-2011 12:36 PM		
	Modified	18-Oct-2011 12:36 PM		
	Proposed	18-Oct-2011 12:36 PM		
	Modified			
	Undo			
	Modified			
	Modified			
	Initial			

**Check-in local changes**

The previous version of each of these files have had its content permanently removed. The changes you are checking in may contain content that should not be checked in. Do you want to continue?

Buttons: Check-in, Skip and continue, Cancel, << Details

Path: /home/tmok/Workspaces/runtime-Jazz\_configuration-remote -> /wiki.conflict.sw.modmod



## RTC 4.0 – Save and Re-load load rules from files

- “I need to lay out files in my workspace differently than how they are loaded on the server and be able to re-use that configuration across my team members.”

**Generate Load Rule Files**

Choose where and how the load rule files will be created.

**File names**  
The following load rule files for "C:\RTC\Self Hosting\3.0.1 (official)\eclipse\runtime-RTCCClient" will be created:

runtime-RTCCClient1.loadrule	(rules for workspace "MyNewWorkspace")
runtime-RTCCClient2.loadrule	(rules for workspace "Dave's "TeamA Stream" Workspace")
runtime-RTCCClient3.loadrule	(rules for workspace "Build's "TeamA Stream" Workspace")

**Destination**  
Select the destination path:  
C:\sandboxLoadRules

**Eclipse project creation policy**  
☐ Eclipse projects will be created for projects found within the loaded folder hierarchy  
☐ Eclipse projects will be created for all root folders  
☒ Eclipse projects will not be created

**Resource identifiers**  
☒ Use item IDs (will remain valid even if resources are renamed or moved)  
☐ Use names (easy to read, but will break if resources are renamed or moved)

**Load Repository Workspace**

**Load from load rule file**  
Select the load rule file to use for the load.

☒ **Local Load Rule File**  
**Local file location**  
Choose the location of the local load rule file  
 Load rule file path: C:\sandboxLoadRules\myLoadRule.loadrule Browse

☐ **Remote Load Rule File**  
**Remote file location**  
Browse for the load rule file in the repository workspace "Dave's "TeamA Stream" Workspace"  
 Load rule: Browse

**Advanced Options**

? < Back Next > Finish Cancel

? Generate Cancel



## RTC 4.0 - Variant Management - Where have my changes flown?

“I fixed a defect and need to verify that it was delivered into multiple variant streams”

Select change sets you want to search for

**Change sets**

Select the change sets you would like to search for.

- 8 : Verify the code
  - ☒ Default Component - sai - deliver to SP1 both 7 and 8 included 2011-11-10T11:02:35.963Z
  - ☒ pilot - testuser1 - Share projects 2011-11-10T11:15:06.838Z
  - ☒ Season1 - testuser1 - Share projects 2011-11-10T11:16:08.510Z
- 4 : Define categories and releases for work items
  - ☒ Season1 - testuser1 - change 3 done 2011-11-10T11:37:51.760Z
  - ☒ Season1 - testuser1 - Handled permissisons 2011-11-10T11:40:58.510Z
  - ☒ Season1 - testuser1 - Defined categories 2011-11-10T11:43:56.479Z
- 10 : Add new class to the project
  - ☒ Season1 - sai - Added new class 2011-11-10T11:26:15.479Z
  - ☒ Season1 - testuser1 - Defined categories 2011-11-10T11:43:56.479Z
- 7 : check out the code
  - ☒ Default Component - sai - Deliver changes to scrumstream1 2011-11-10T11:01:16.66Z

☒ Show child work items

**Search Targets**

Choose where you would like to search for the selected change sets.

Target		Result
Scrumproject Stream		2 of 8 change sets included
Scrumproject Stream2		0 of 8 change sets included
Team1Stream		5 of 8 change sets included

Add Work item...

Remove

Add Stream...

Add Repository Workspace...

Add all Streams...

Add Snapshots...

Remove

Refresh

For each stream selected tell me how many of the change sets are included in that stream

## RTC 4.0 - Simple SCM UI; Improved CLI; Hudson/Jenkins Builds

- **Simple SCM UI**
  - *Windows shell Explorer SCM integration*
- **MSCCI Support – Basic versioning API**
  - *Tested with Rhapsody and with Matlab (will not work for Visual Basic 6)*
- **CLI Scripting and New Commands**
  - *Improved SCM Command Line Scripting*
    - <https://jazz.net/wiki/bin/view/Main/SCMCommandLineScriptingSupport>
  - *New SCM CLI commands*
- **Hudson/Jenkins Build Integration**
- **ISPF Client Improvements**



RTC 4.0 – I can version anything easily outside the IDE, integrate my existing build engine or tool and use the CLI for more scripting

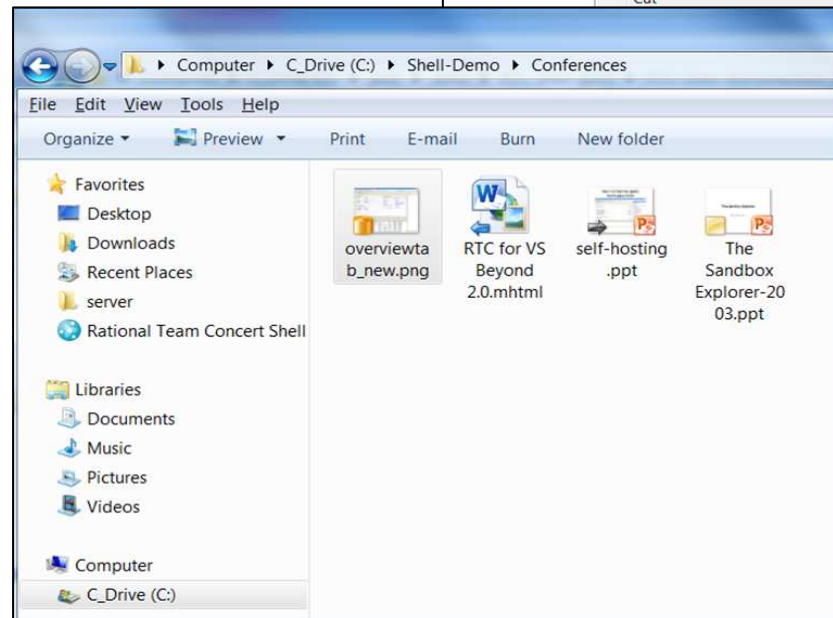
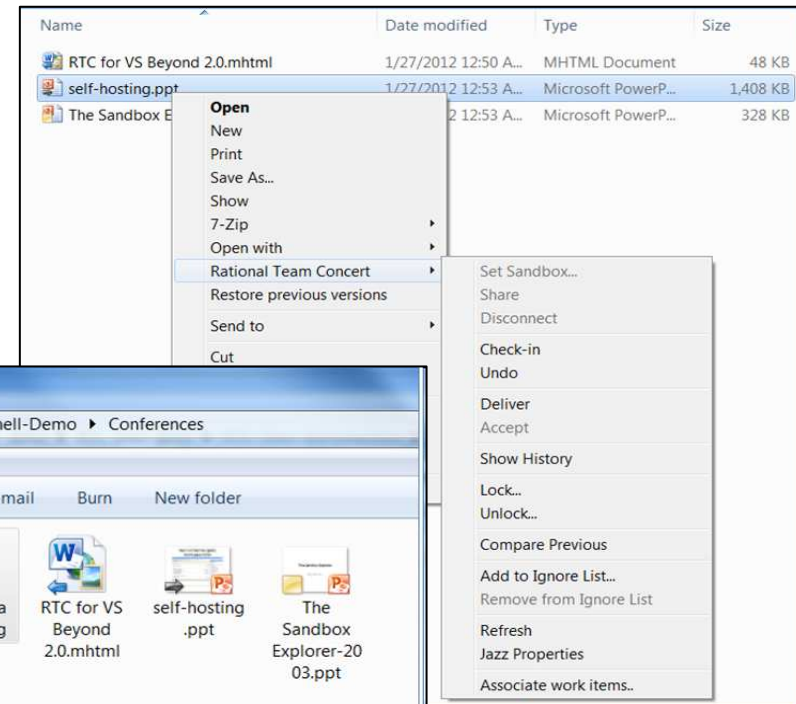


2011

2012

2013

- **Simple SCM UI**
  - Windows 7 **Explorer SCM integration**
- **Built-In Hudson/Jenkins Build Integration**
  - View build health and control builds from RTC
- **MSCCI Support – Basic versioning API**
  - Tested with Rhapsody and Matlab
- **CLI Scripting and New Commands**
  - Improved SCM command line scripting
  - Many new SCM CLI commands



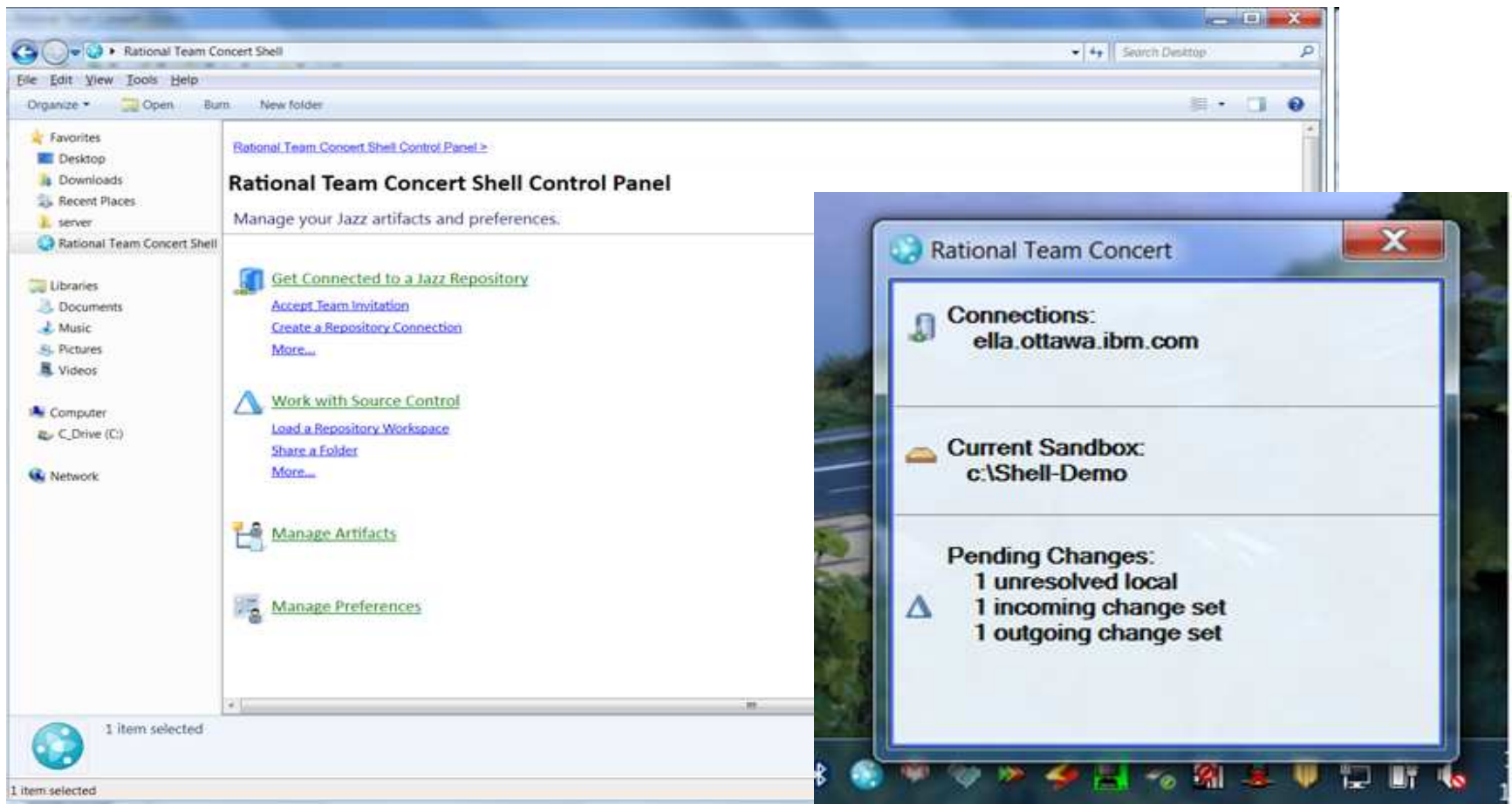
Hudson



Jenkins

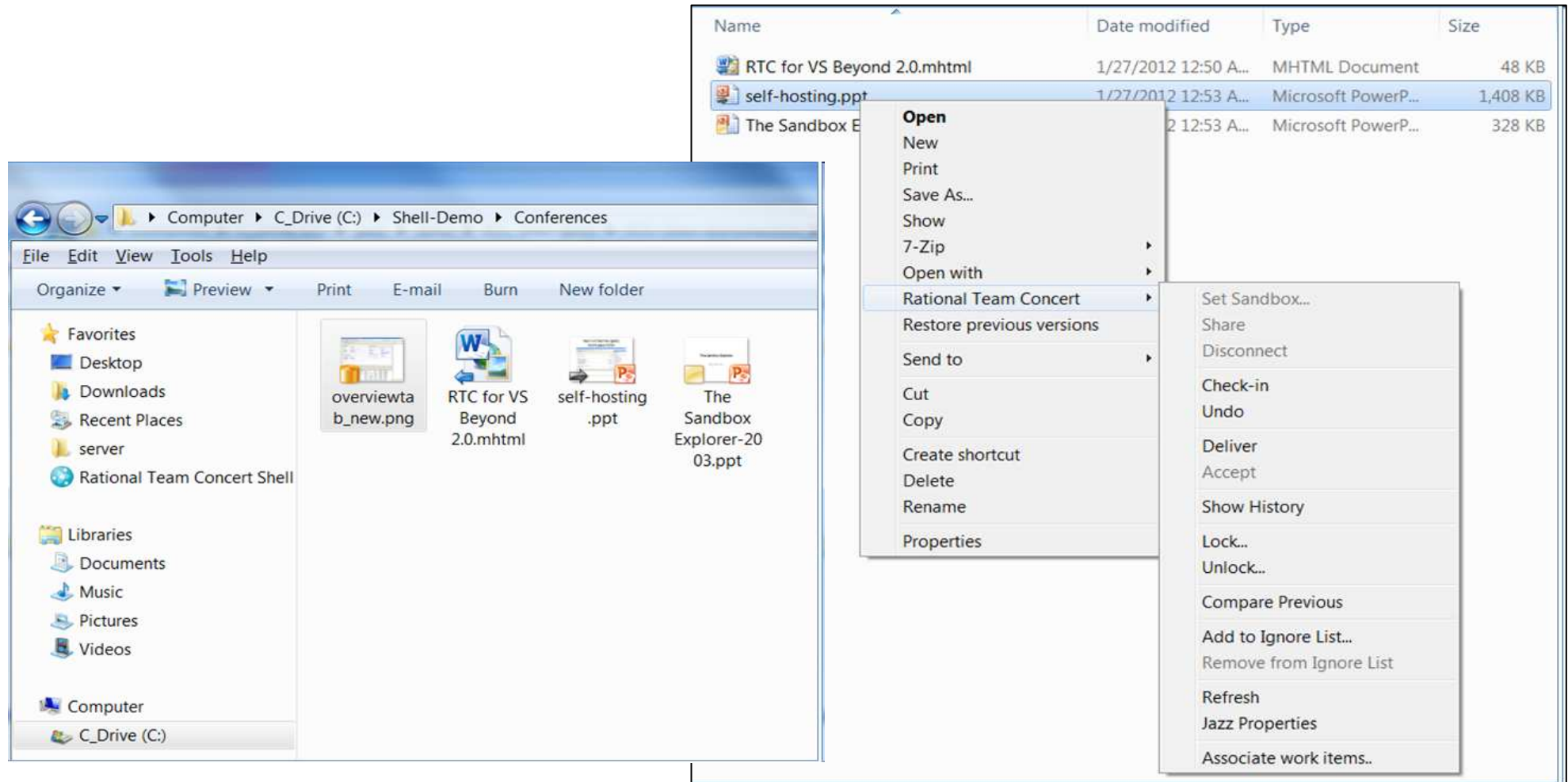
## RTC 4.0 - Windows 7 Explorer Integration – SCM

- Version Everything : Make it simple to version content for non-developers
  - Windows 7 shell integration for SCM – basic versioning from Windows Shell, w/ locking



## RTC 4.0 - Windows 7 Explorer Integration – SCM

- Simple file based menus for versioning within the Windows shell
- Files are decorated with visual versioning status icons





## RTC 4.0 – Hudson/Jenkins Build Support out of the box

*“As a RTC build user, I want to easily manage builds in Hudson/Jenkins”*

- Directly submit builds through RTC to Hudson and view build health in RTC
- No need to log into Hudson to see the console job output

Test2 [15]

Build Hudson\_Build\_Definition Test2 [15]

✓ Completed

Duration: 24 seconds  
Start Time: October 21, 2011 2:51:23 PM  
Completed: October 21, 2011 2:51:48 PM

Contribution Summary

External Links: [1 link](#)  
Logs: [1 log](#)

Associated Release

Released builds are available as choices in the work item "Found In" field.  
[Create a release to associate with this build](#)

Reported Work Items

Work items reported against this build to help stabilize it.

[None reported against this build](#)  
[Create a new work item](#)  
[Associate an existing work item](#)

General Information

Requested by: ADMIN  
Build Definition: [Hudson\\_Build\\_Definition](#)  
Build Engine: [Hudson\\_Engine](#)  
Tags:   
☒ Deletion allowed

Submit builds to Hudson directly from RTC using its extensible Build Engine support

View Hudson Build Result to assess the builds success or failure

Hudson console job output linked to the build result as a log file

Overview External Links Logs



## ISPF Client Compare and Merge

BLZSLCNF Unresolved Conflicts List Actions

Resource : Pacbase\_Batch/z0Ssrc/COBOL/PACB10.cbl

Unresolved Conflict Action

- 1. Resolve With Mine
- 2. Resolve With Proposed
- 3. Compare and Merge
- 4. Compare and Merge ASCII
- 5. View Local
- 6. View Local ASCII
- 7. View Remote
- 8. View Remote ASCII

Select a choice and press **EN**

F1=Help F2=Split  
F7=Backward F8=Forward

Enhanced conflict resolution

```

File Edit Edit_Settings Menu Utilities Compilers Test Help
ISREDDE2 SYS12142.T103651.RA000.USER52.R0146785 Changes are shown
Command ==> Scroll ==> CSR
=NOTE= Lines which exist only in the local file are shown with a label on the
=NOTE= line ,for example .OAAAA. Lines which exist only in the remote file are
=NOTE= shown as information lines (=====) and are shown in white.
=NOTE= You can use the Make Data(MD) line command to add those lines to your
=NOTE= edit session and delete the label lines to acheive the desired merging.
000001 IDENTIFICATION DIVISION.
000002 PROGRAM-ID. PACB10.
===== AUTHOR. Test SCM BDF TOMSCMT.
===== DATE-COMPILED. 10/05/12.
.OAAAA AUTHOR. Conflict resolution.
.OAAAB DATE-COMPILED. 21/05/12.
000005 ENVIRONMENT DIVISION.
000006 CONFIGURATION SECTION.
000007 SOURCE-COMPUTER. IBM-370.
000008 OBJECT-COMPUTER. IBM-370.
000009 DATA DIVISION.
000010 WORKING-STORAGE SECTION.
000011 01 DEBUT-WSS.
000012 05 FILLER PICTURE X(7) VALUE 'WORKING'.
000013 05 IK PICTURE X.
000014 05 XH PICTURE X.
===== 05 TM PICTURE X.
000015 01 CONSTANTES-PAC.
000016 05 FILLER PICTURE X(60) VALUE
000017 '9444 ACD07/04/06TOMSCMLUCIE 09:31:37TOMSCM BVAP
F1=Help F2=Split F3=Exit F5=Rfind F6=Rchange F7=Up
F8=Down F9=Swap F10=Left F11=Right F12=Cancel
    
```

Compare and Merge

## ISPF Client Loading enhancements

Finer grained loading for performance and convenience

Search and load selected files/members

```

Menu  Help
-----
Load Repository Workspac

Data set prefix . . PAT.TEST
z/OS UNIX directory

Command - Enter "/" to select action

Component to load:
/ Mortgage App Component
***** Bottom of data *****

Command ==>          Scroll ==> PAGE
F1=Help      F2=Split  F3=Exit   F4=Expand  F7=Backward
F8=Forward   F9=Swap   F10=Actions F12=Cancel

F9=Swap      F10=Actions F12=Cancel
Ma          a
20/019
    
```

```

Load Component List Actions

Component Mortgage App Component

Load Component Action
=  1. Select zComponent projects
   2. Search for zFile/member
   3. Load all component's files

Select a choice and press ENTER to process action.

F1=Help      F2=Split  F3=Exit   F7=Backward  F8=Forward
F9=Swap      F12=Cancel
    
```

Selective loading with dependencies

## RTC 4.0 – IBM Developer for IBM Enterprise Platforms

- **IBM Developer for IBM Enterprise Platforms Enhancements**

- *Load with dependencies (aka sparse loading)*
- *Dependency build enhancements*
- *Enhanced IBM i support*



## Load with Dependencies (aka Sparse Loading)

The 'Source Code Data' window displays a table of resources:

fileName	fileType	filePath	language	componentName
EPSCMORT.cbl	MAIN	(MortgageApplication-EPSCMORT-cbl)	COBOL	My Project Default Component
EPSCSMRD.cbl				
EPSCSMRT.cbl				
EPSMLIST.cbl				
EPSMPMT.cbl				
EPSNBRVL.cbl				

The context menu for the selected file includes the following options:

- Open local file
- Open remote file
- Open source code data
- Load
- Load with dependencies...**
- Impact Analysis...
- Associate work item...

The 'Load with dependencies' dialog box shows the following repository files to load:

- My Project Stream Workspace2
  - My Project Default Component
    - MortgageApplication-Common
      - .zOSbin
        - build.xml
        - setuptcz\_v3.xml
        - setuptcz\_v3.xml.launch
        - setuptcz.xml
        - setuptcz.xml.launch
      - zOSsrc
        - BIND
        - COPYBOOK**
          - ☒ EPSMTCOM.cpy
          - ☒ EPSMTINP.cpy
          - ☒ EPSMTOUT.cpy
          - ☒ EPSNBRPM.cpy
          - ☒ EPSFDATA.cpy

The dependencies are pre-selected based on the search path and repository workspace.

Buttons at the bottom: < Back, Next >, Cancel, Finish.

Selective loading for performance and convenience





## Dependency Build Enhancements

- Build preview
- Build subsets populated by Work Items
- Post build report

**Request Build**

Request that a build be executed on the first available build engine.

Build:

► Build Options

► Build Agent Authentication Override

▼ Dependency Build Options

☒ Build workspace

☐ Build subset

☒ Build changed items only

☐ Personal build ⓘ

Personal build options

Repository workspace:\*

Load directory:\*

Resource prefix:\*

☐ Load only changed and impacted source

Referenced Libraries

Library

haniaPAS Stream haniaPAS Stream Workspace (Preview) 20120323-1445410305

**Build Hania Maillist build (Preview) 20120323-1445410305**

**Completed**

Duration: 6 seconds  
Start Time: March 23, 2012 2:45:41 PM  
Completed: March 23, 2012 2:45:47 PM

Status Trend:

**Contribution Summary**

Downloads: [6 downloads](#)  
External Links: [1 link](#)  
Logs: [1 log](#)

**Associated Release**

Released builds are available as choices in the work item "Found In" field.

[Create a release to associate with this build](#)

**Reported Work Items**

Work items reported against this build to help stabilize it.

☒ None reported against this build

[Create a new work item](#)

[Associate an existing work item](#)

**General Information**

Requested by: haniaa  
Build Definition: [Hania Maillist build](#)  
Build Engine: [Zadt10.3333](#)  
Build History: [13 builds](#)  
Tags:

☒ Deletion allowed

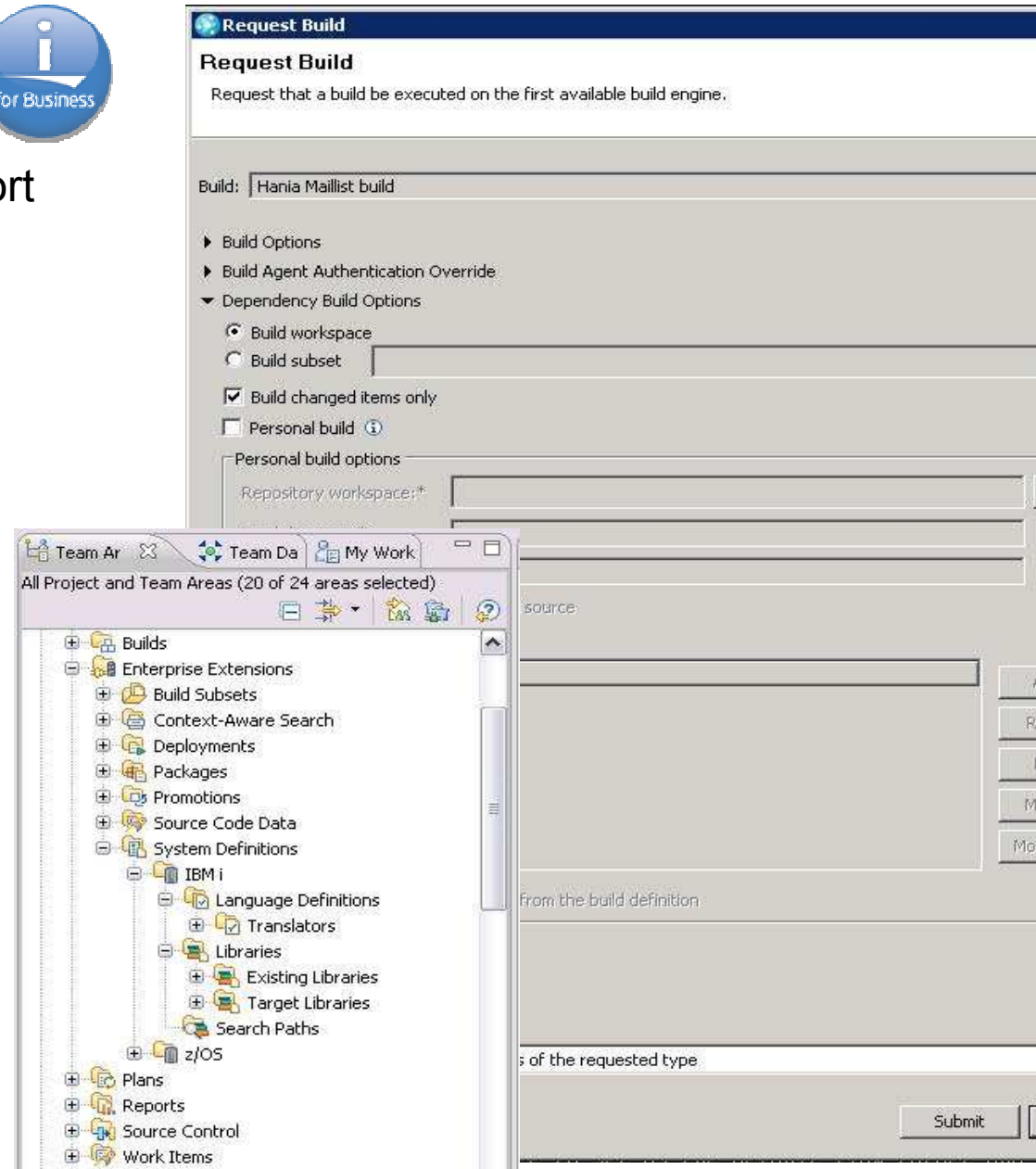
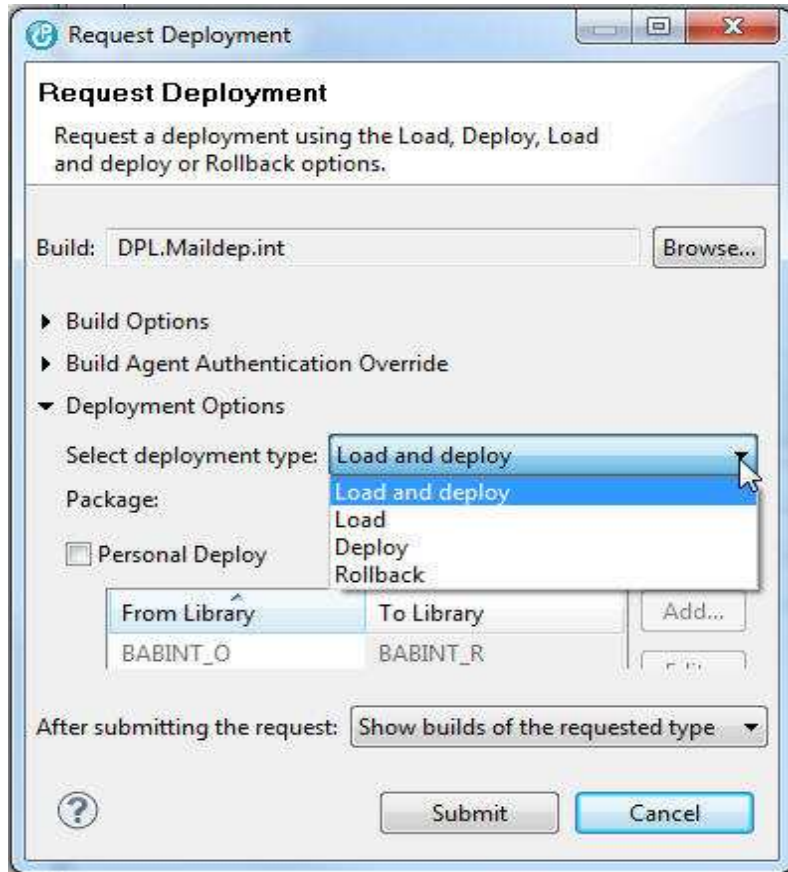
Overview Activities Downloads Logs External Links Properties



## Enhanced IBM i support



- Full Dependency build with link support  
'Build what has changed'
- Work Item based promotion and deployment





## Summary

- **CLM 2012:**

- *Clustering for HA, Incremental Upgrades, Faster Upgrades*

- **Planning:**

- *Plan across projects; Support Kanban; Improved MS-Project Import/Export*

- **Work Items:**

- *More flexible access control, user input on queries, manage external HTTP data sources*

- **SCM:**

- *Improved variant management - locate change sets across release streams*
- *Flexible workspace layout and control – load rules from files*
- *Version anything outside the IDE – Windows Shell SCM integration*
- *Improved CLI; more CLI commands and enhanced scripting, Enhanced ISPF client*
- *Integrate SCM better with MSCCI tools*
- *Load with dependencies – sparse loading – (RTC Developer for IBM Ent. Platforms only)*

- **Build:**

- *Out of the box support for Jenkins and Hudson*
- *Improved build, promote and deploy for system z and IBM i*

## New! RTC Developer for Workgroups Starter Pack

- **RTC Developer for Workgroups Starter Pack – 10 Authorized users w/ 24x7 support**
  - Only ONE 10-pack per Jazz license server.
  - You can add 50 RTC Developer for Workgroups to your ONE 10-user Starter Pack for 60 seats total.
  - Same restrictions as Dev for WG – no floating, token, HA/Clustering or ability to share SCM code changes across multiple RTC repositories.

### Need to get started with RTC on a departmental budget and need 24x7 support?

- . For example, a customer wants 14 seats of RTC Developer for Workgroups:  
With RTC 4.0 they now can buy:

Part #	Q	Product	# Users
D0PVHLL	1	RTC Developer for Workgroups Starter Pack	10 users
D0GHMLL	4	RTC Developer for Workgroups	4 users
Total Developer for Workgroups seats			14 users

## Developer for Workgroups Starter Pack - FAQ

- **Does this replace the RTC 10-free with community support?**
  - No. This is a new option to get started with 10 licenses of RTC and get IBM support (24x7). There is no change to 10-free and it's community supported model.
- **What about RQM and RRC and the RTC Developer for WG Starter Pack?**
  - If you need RRC or RQM you can now buy ONE RTC Developer for Workgroups Starter Pack and combine it with any other CLM products and have IBM support (24x7) support for users.
- **Can I add ONE Starter Pack to my existing deployment?**
  - Yes, BUT you must be running RTC 4.0 or upgrade your server to 4.0 and use RTC 3.x clients. It only has a 4.0 license key so it won't run on an RTC 3.x server.
- **If I already have RTC 10-free installed why would I buy the Starter Pack?**
  - To get IBM 24x7 support and to grow your deployment with more seats that also have 24x7 support.
- **Can I have both the 10-free and Starter Pack installed on the same server?**
  - No. If you buy the RTC Developer Starter Pack (perpetual license) and you have the 10 free license installed it will replace your 10-free license key. You can have one or the other but not both.
  - **Note:** If you have the 10-free RTC licenses then all your licenses are community supported on that Jazz server. If you have the Starter Pack all your licenses are IBM 24x7 supported on that Jazz server and can be combined with other supported licenses as you grow.



[www.ibm/software/rational](http://www.ibm/software/rational)

© Copyright IBM Corporation 2011. All rights reserved. The information contained in these materials is provided for informational purposes only, and is provided AS IS without warranty of any kind, express or implied. IBM shall not be responsible for any damages arising out of the use of, or otherwise related to, these materials. Nothing contained in these materials is intended to, nor shall have the effect of, creating any warranties or representations from IBM or its suppliers or licensors, or altering the terms and conditions of the applicable license agreement governing the use of IBM software. References in these materials to IBM products, programs, or services do not imply that they will be available in all countries in which IBM operates. Product release dates and/or capabilities referenced in these materials may change at any time at IBM's sole discretion based on market opportunities or other factors, and are not intended to be a commitment to future product or feature availability in any way. IBM, the IBM logo, Rational, the Rational logo, Telelogic, the Telelogic logo, and other IBM products and services are trademarks of the International Business Machines Corporation, in the United States, other countries or both. Other company, product, or service names may be trademarks or service marks of others.