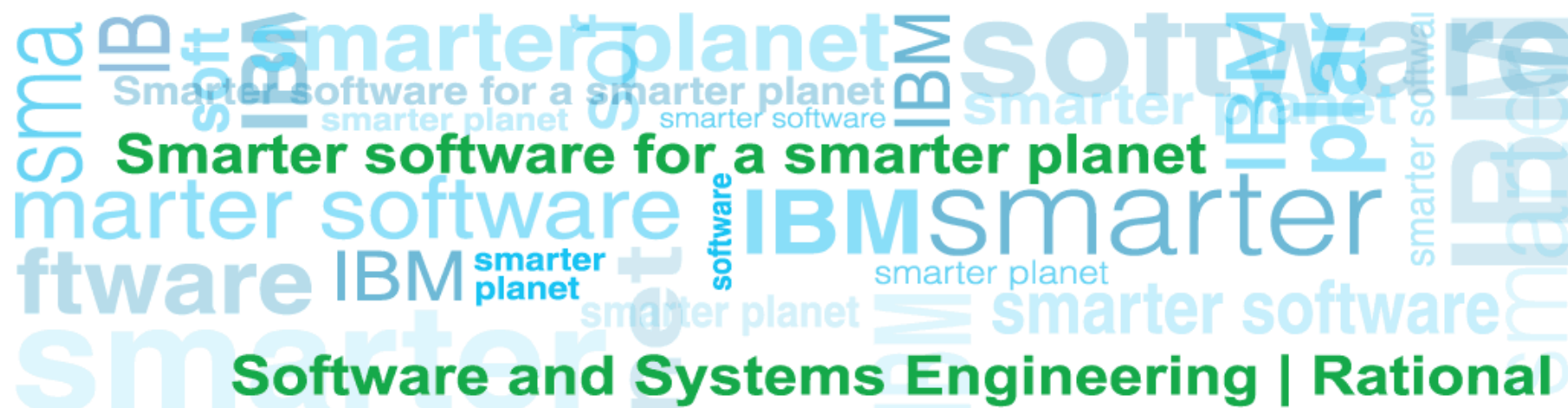


## What's New?

IBM Rhapsody Design Manager Beta &  
IBM Rational Software Architect Design Manager Beta



## Please note

IBM's statements regarding its plans, directions, and intent are subject to change or withdrawal without notice at IBM's sole discretion.

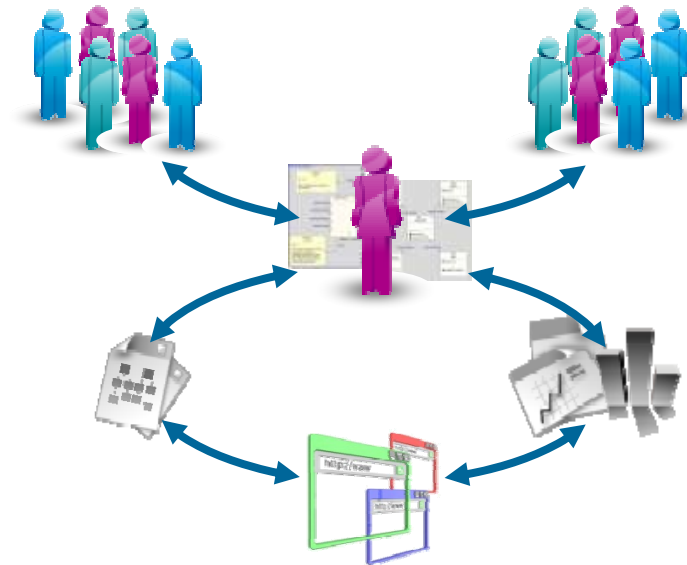
Information regarding potential future products is intended to outline our general product direction and it should not be relied on in making a purchasing decision.

The information mentioned regarding potential future products is not a commitment, promise, or legal obligation to deliver any material, code or functionality. Information about potential future products may not be incorporated into any contract. The development, release, and timing of any future features or functionality described for our products remains at our sole discretion.

Performance is based on measurements and projections using standard IBM benchmarks in a controlled environment. The actual throughput or performance that any user will experience will vary depending upon many factors, including considerations such as the amount of multiprogramming in the user's job stream, the I/O configuration, the storage configuration, and the workload processed. Therefore, no assurance can be given that an individual user will achieve results similar to those stated here.

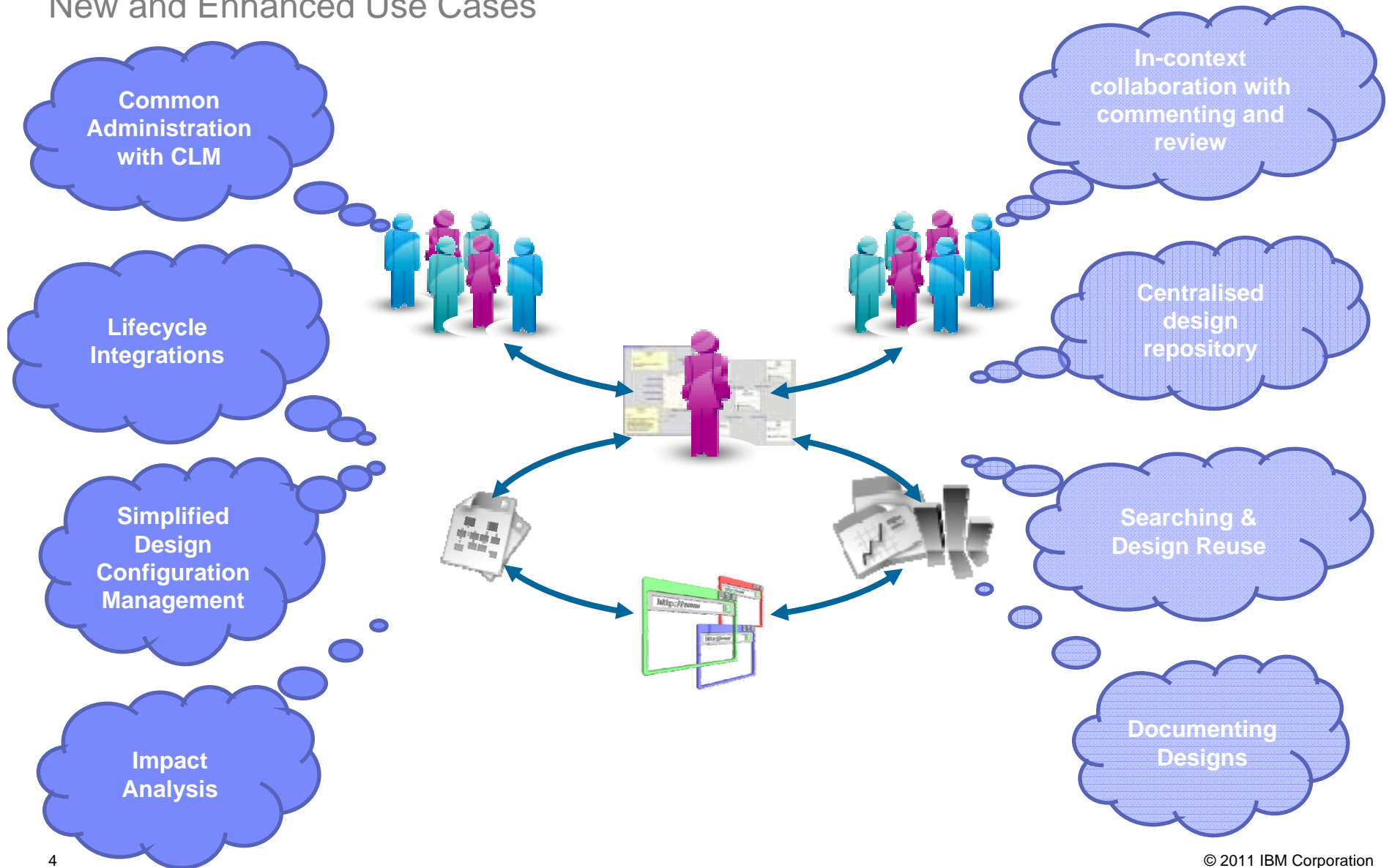
## What is Design Management?

- ✓ **Design Management** integrates software and systems design into the lifecycle
- ✓ Design Management helps teams to:
  - **Collaborate and iterate** on their software and systems designs
  - Produce **better quality designs with less time**
  - **Integrate designs and design process** with the rest of the lifecycle
- ✓ Design Management capabilities have been added to Rational's industry leading software and systems design solutions: **Rhapsody** and **Rational Software Architect (RSA)** to enhance their design capabilities with **new team collaboration and lifecycle capabilities**



## RSA and Rhapsody Design Management Beta

### New and Enhanced Use Cases



## RSA and Rhapsody Design Manager Beta – What's New



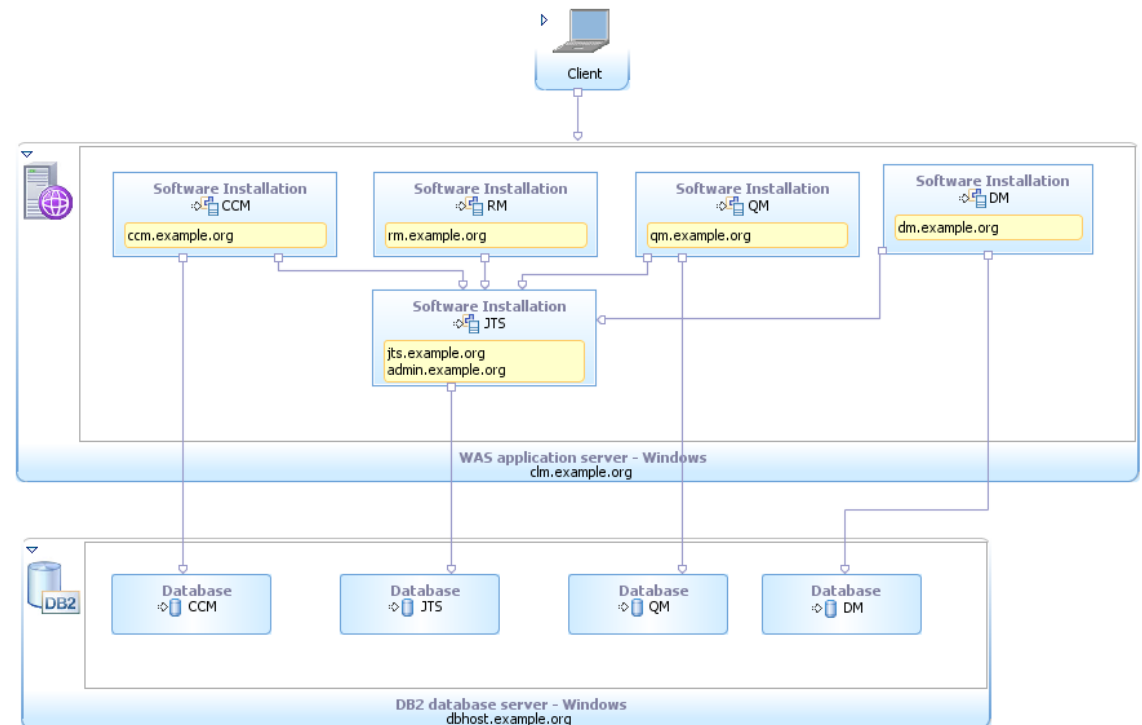
2011

2012

2013

### Common Administration with CLM

- Less infrastructure to manage with a **shared Jazz Team Server**
- One place to define and administer users
- **Lifecycle projects** including design
- Design included with **Money That Matters** sample application



## Design and Lifecycle Projects

- Get up and running quickly with lifecycle projects that include design
- Automatically creates project areas and configures associations for linking
- Manage users across project areas

### Lifecycle Project Members

 Add Member |  Save



The members page provides an easy way to manage the members of a Lifecycle Project. From this page, you can add or remove members and manage the process roles assigned to a member in each artifact container.

Select Project: Money that Matters Sample

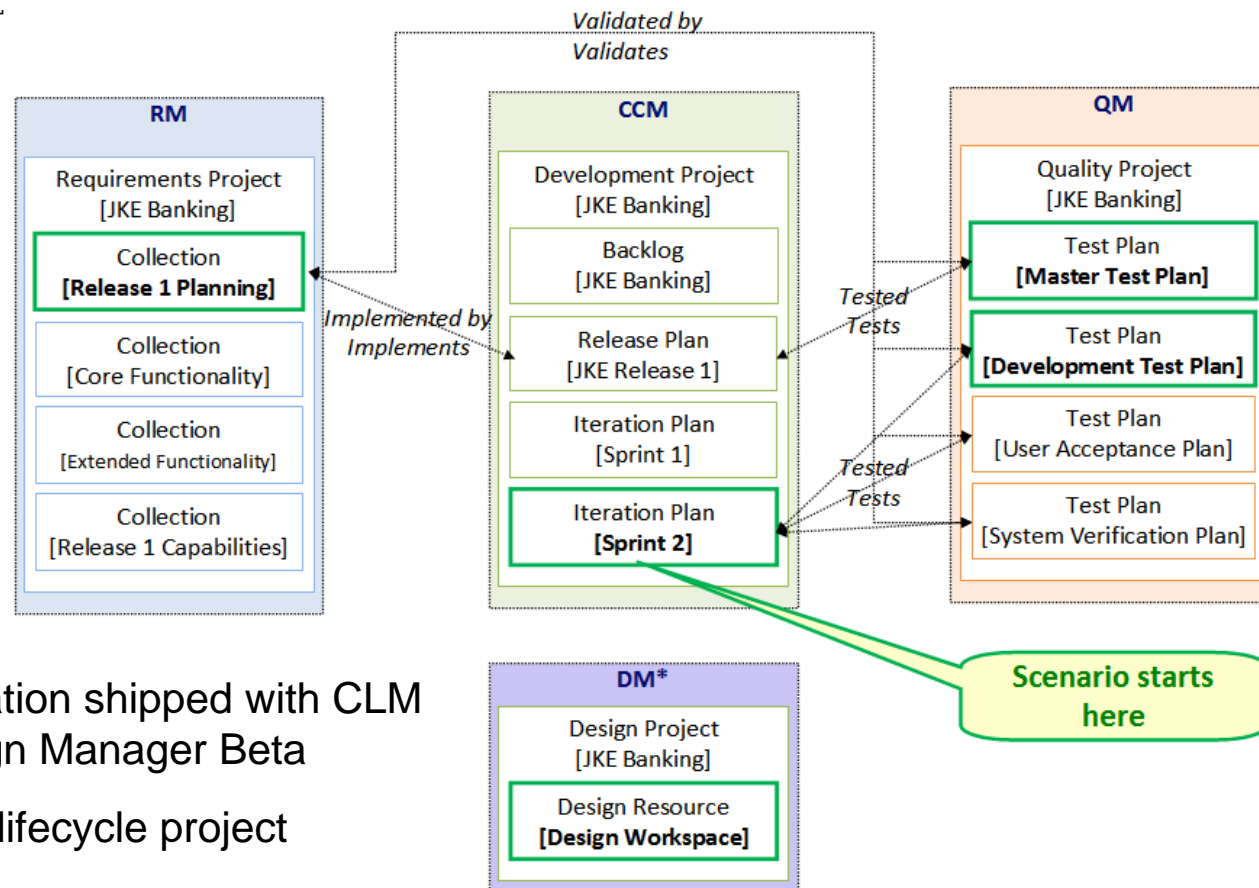
50 Items Per Page

Previous | 1 - 13 of 13 | Next

Type to filter

Name	User ID	CCM	AM	QM	RM	Status	Actions
Al	al	✓	✓	✓	✓	Ok	 
Bob	bob	✓	✓	✓	✓	Ok	
Build	build	✓				Ok	
Curtis	curtis		✓		✓	Ok	
Dave	dave	✓	✓	✓	✓	Ok	

## Sample Application - Money That Matters 2012



- Sample application shipped with CLM and RSA Design Manager Beta
- Deployed as a lifecycle project
- Contains RM, CCM, QM, and DM artifacts
- Makes it easy to try out CLM

## RSA and Rhapsody Design Manager Beta – What's New



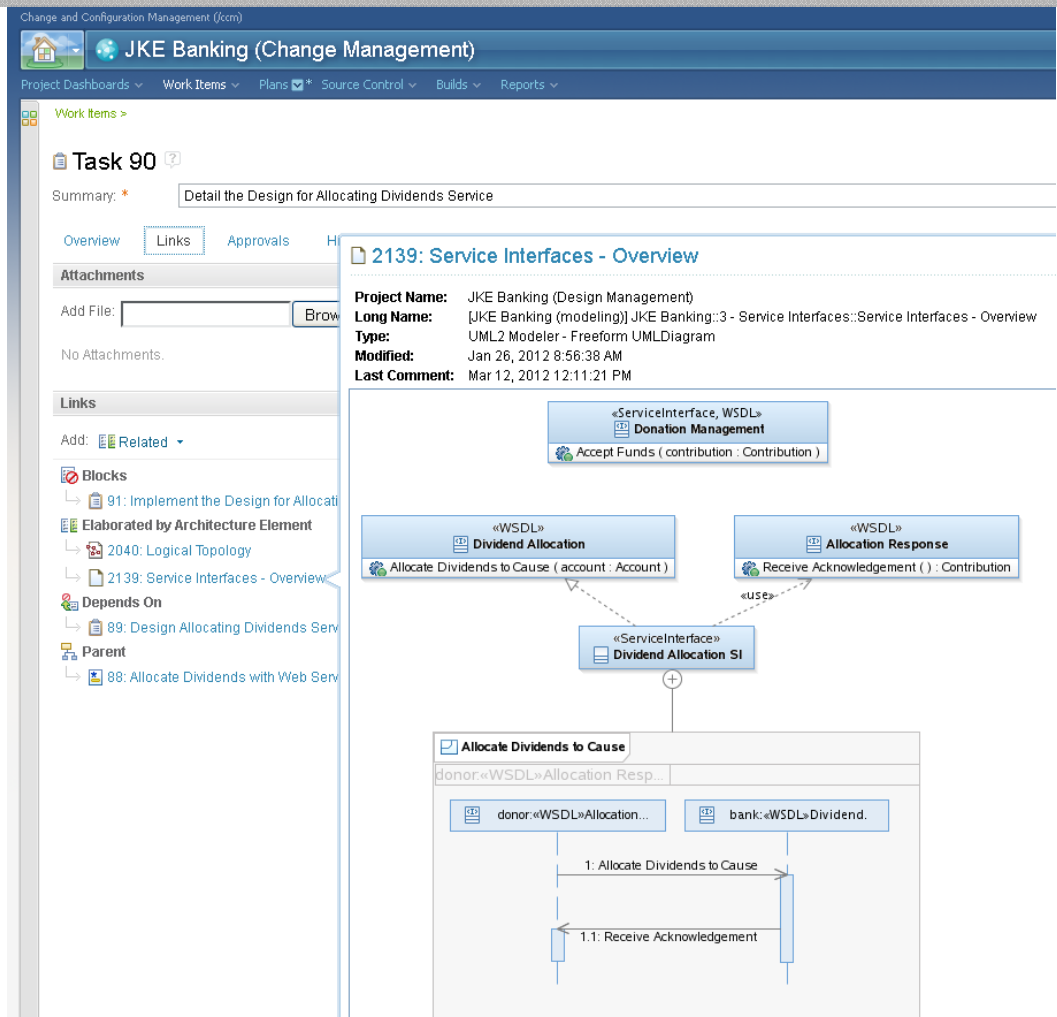
2011

2012

2013

### Lifecycle Integrations

- Bi-directional **traceability** between **requirements (RRC & DOORS)** and **design**
- Stakeholders can **easily find designs**
- Understand the **impact of changes** to requirements or designs





## Design and Lifecycle Traceability Scenarios

### ■ Design and Requirements

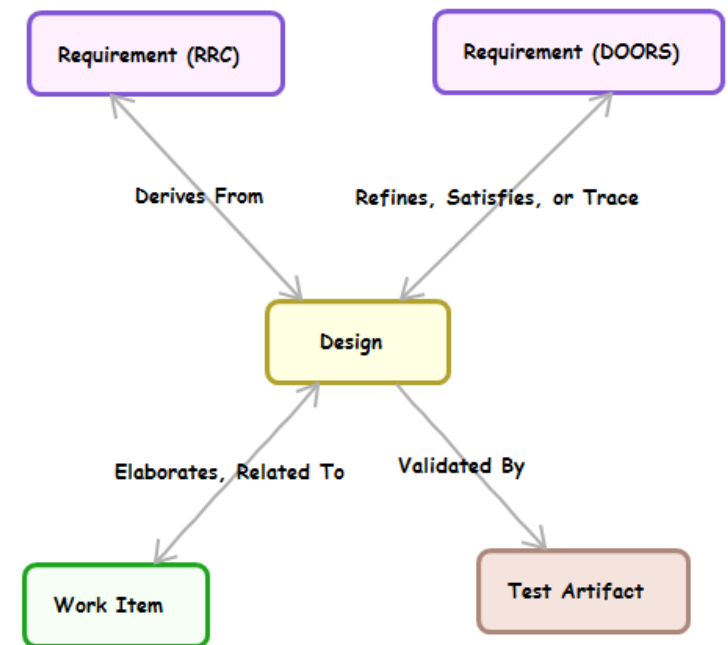
- **Analysis**: link designs that provide the next level of details for requirements
- **Coverage**: link designs that implement requirements to ensure coverage

### ■ Design and Change Management (Work Items)

- **Planning**: link design tasks to related designs
- **Design Changes**: link design change sets to related work items
- **Implementation**: link implementation tasks to related designs making it easier for developers to find designs
- **Defects**: link design defects back to defective design

### ■ Designs and Test Artifacts (one-way only)

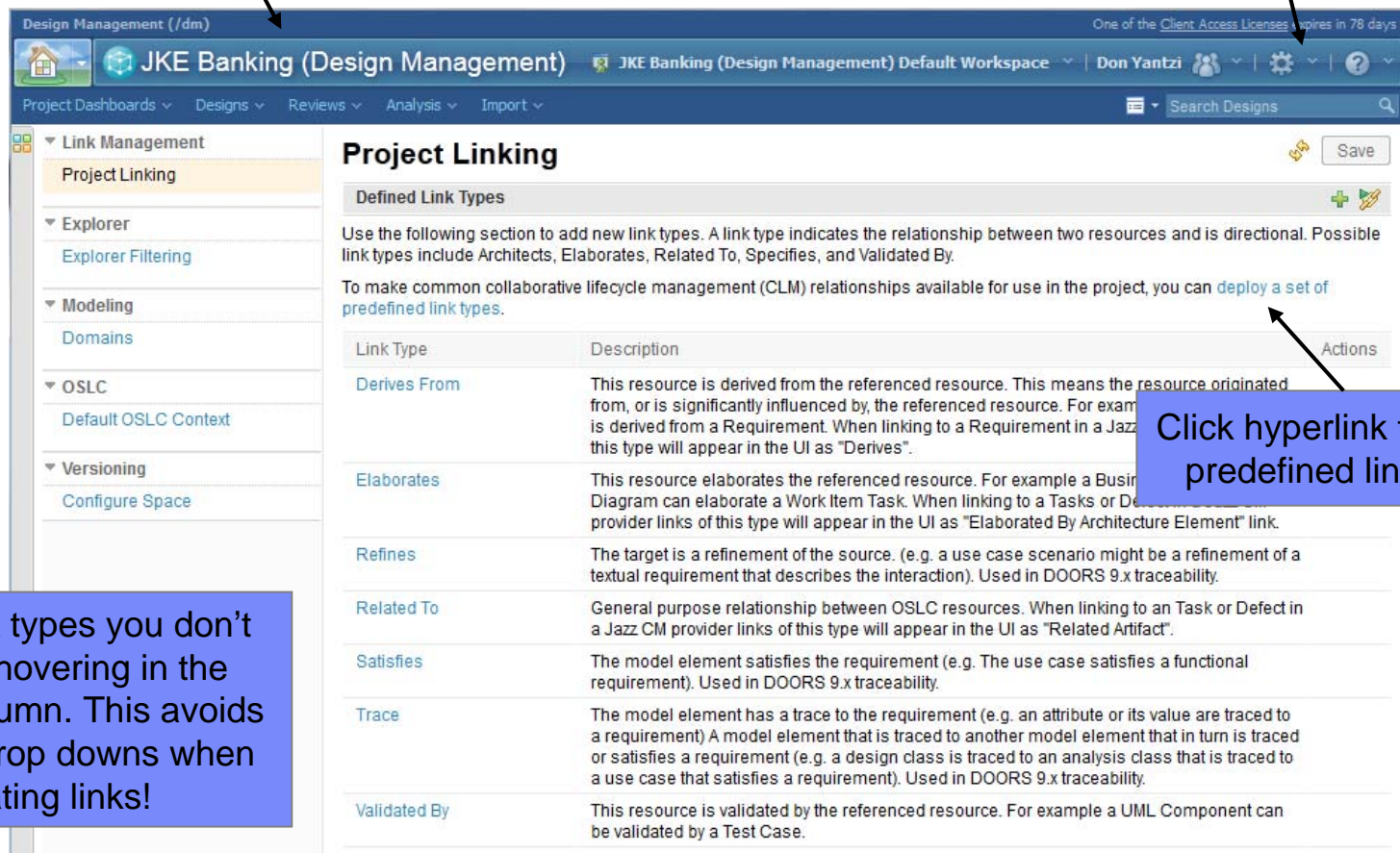
- **Test coverage of designs**: Link from designs to test artifacts that validate the design to ensure test coverage



## Deploying Predefined Link Types

Link types are specific to each project area

Select Manage Project Properties



Design Management (/dm)

JKE Banking (Design Management)

Project Dashboards ▾ Designs ▾ Reviews ▾ Analysis ▾ Import ▾

Search Designs

One of the Client Access Licenses expires in 78 days

Don Yantzi

Link Management

Project Linking

Explorer

Explorer Filtering

Modeling

Domains

OSLC

Default OSLC Context

Versioning

Configure Space

### Project Linking

Defined Link Types

Use the following section to add new link types. A link type indicates the relationship between two resources and is directional. Possible link types include Architects, Elaborates, Related To, Specifies, and Validated By.

To make common collaborative lifecycle management (CLM) relationships available for use in the project, you can [deploy a set of predefined link types](#).

Link Type	Description	Actions
<a href="#">Derives From</a>	This resource is derived from the referenced resource. This means the resource originated from, or is significantly influenced by, the referenced resource. For example, a Use Case is derived from a Requirement. When linking to a Requirement in a Jazz CM provider links of this type will appear in the UI as "Derives".	<a href="#">Deploy</a>
<a href="#">Elaborates</a>	This resource elaborates the referenced resource. For example a Business Use Case Diagram can elaborate a Work Item Task. When linking to a Task or Defect in a Jazz CM provider links of this type will appear in the UI as "Elaborated By Architecture Element" link.	<a href="#">Deploy</a>
<a href="#">Refines</a>	The target is a refinement of the source. (e.g. a use case scenario might be a refinement of a textual requirement that describes the interaction). Used in DOORS 9.x traceability.	<a href="#">Deploy</a>
<a href="#">Related To</a>	General purpose relationship between OSLC resources. When linking to an Task or Defect in a Jazz CM provider links of this type will appear in the UI as "Related Artifact".	<a href="#">Deploy</a>
<a href="#">Satisfies</a>	The model element satisfies the requirement (e.g. The use case satisfies a functional requirement). Used in DOORS 9.x traceability.	<a href="#">Deploy</a>
<a href="#">Trace</a>	The model element has a trace to the requirement (e.g. an attribute or its value are traced to a requirement) A model element that is traced to another model element that in turn is traced to a requirement (e.g. a design class is traced to an analysis class that is traced to a use case that satisfies a requirement). Used in DOORS 9.x traceability.	<a href="#">Deploy</a>
<a href="#">Validated By</a>	This resource is validated by the referenced resource. For example a UML Component can be validated by a Test Case.	<a href="#">Deploy</a>

Save

Delete link types you don't need by hovering in the Actions column. This avoids clutter in drop downs when creating links!

Click hyperlink to deploy predefined link types

## Showing Designs in Plans and Requirements Views

<input type="checkbox"/>	206	JKE Charity Coordinator will respond to request in the website triggering..	Feature
<input type="checkbox"/>	216	Donors can choose to support an organization	Feature
<input type="checkbox"/>	217	Service for Allocating Dividends	Feature
Derives			
584: Service Interfaces - Overview			
537: Logical Topology			

RRC View showing design elements linked to requirements

BRM Sprint 2 (1.0) Plan				
34 items: 34 open, 0 closed   Ends in: 1 day				
Plan Details				
Planned Items ? Links Snapshots Dashboard Notes				
View As: Traceability (23 items filtered)				
Summary	Implements Requirement	Tested By Test Case	Elaborated by Architecture Element	
Donor Dividend Allocation Criteria	Donor Dividend Allocation Criteria	Donor dividend allocation conforms to stated criteria	Allocate Dividends to Cause	
Validate Loan Term and Amount	Validate Loan term and amount	Test Validate Loan Term and Amount	--	
Frequency of dividend transfer	Frequency of dividend transfer	Verify dividend transfer frequency	--	
Requests sent in form of email	Requests sent in form of email	Process email requests	--	
Organization must identify how much money is...	Organization must identify how much money is desir	Organization must identify how much money is desir	--	
Organizations may apply with an initial request	Organizations n	apply with an initial request	--	
Customers can Nominate an Organization	Customers can	nominate an Organization	--	
Organization must provide justification for why ...	Organization m	provide justification for why funds	--	
Organizations can Apply	Organizations c	Apply	defined organizations	
JKE Charity Coordinator will respond to reque...	JKE Charity Coordinator will respond to request in the	JKE Charity Coordinator responds to online request	--	
Allocate Dividends with Web Service	217: Service for Allocating Dividends	--	Service Interfaces - Overview	

Plan in Traceability view showing linked design elements

## RSA and Rhapsody Design Manager Beta – What's New



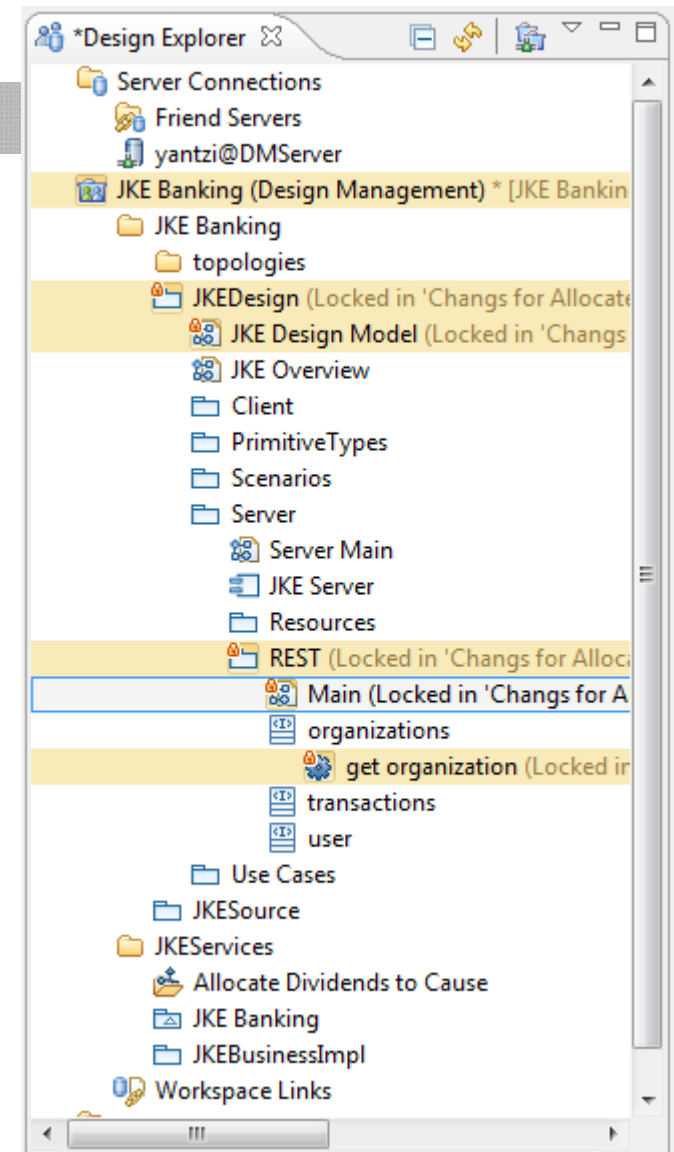
2011

2012

2013

### Simplified design configuration management

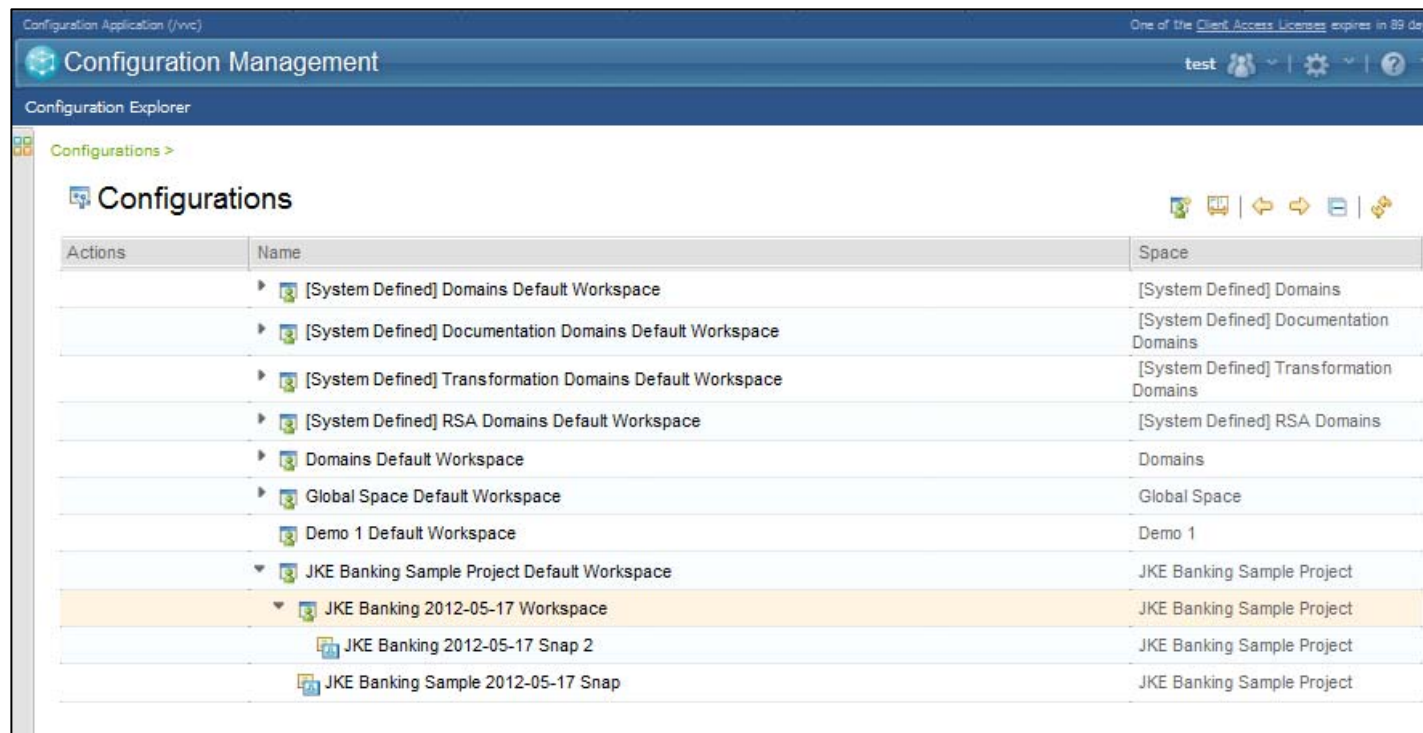
- **Designs directly editable** on Jazz from RSA and Rhapsody
- Locking, versioning, history, and change control on individual model elements
- **Parallel workspaces** and snapshots
- Changes grouped into change sets
- Design reviews on private changes prior to sharing





## Introduction to DM Workspaces and Configurations

- New configuration application maintains workspaces and snapshots for model elements
- A group of Configurations is called a **Configuration Space**
- Multiple project areas can be connected to the same Space and share Configurations
- A **Workspace Configuration** is one where users can modify each resource
- A **Snapshot Configuration** is one where users can only view versions for each resource



## RSA and Rhapsody Design Manager Beta – What's New



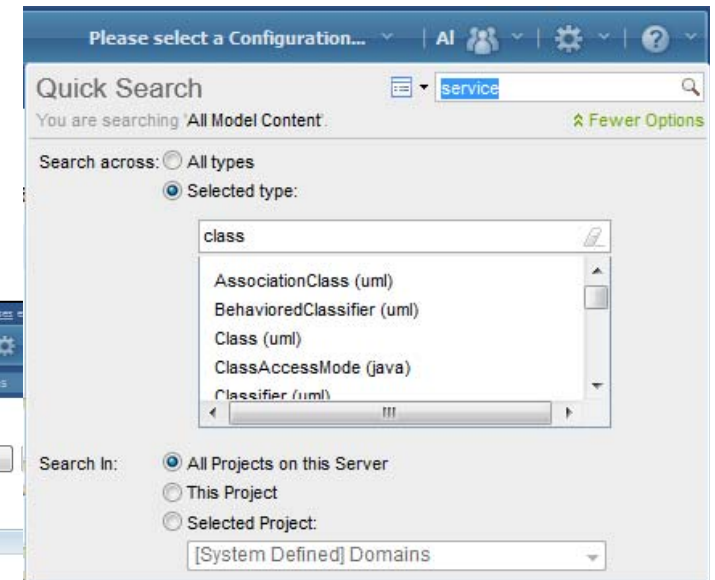
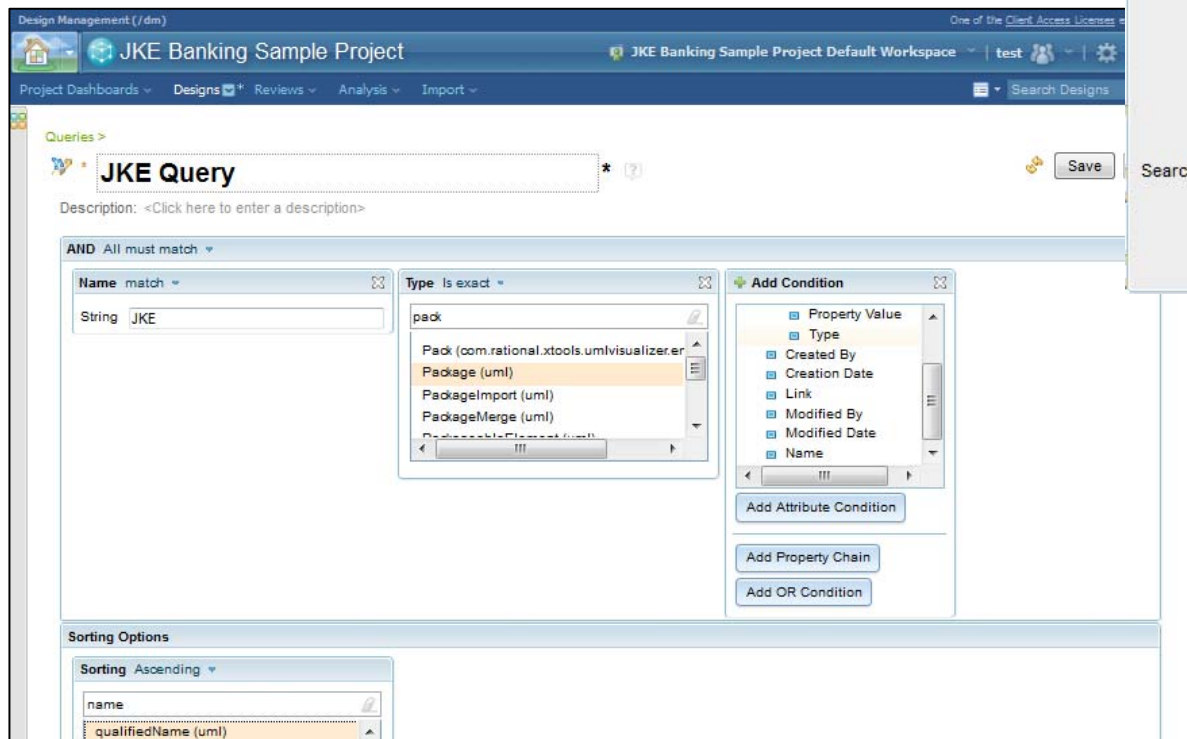
2011

2012

2013

### Find existing designs

- Quick search **across project areas**
- Query-based searching** on design types and semantics



## RSA and Rhapsody Design Manager Beta – What's New



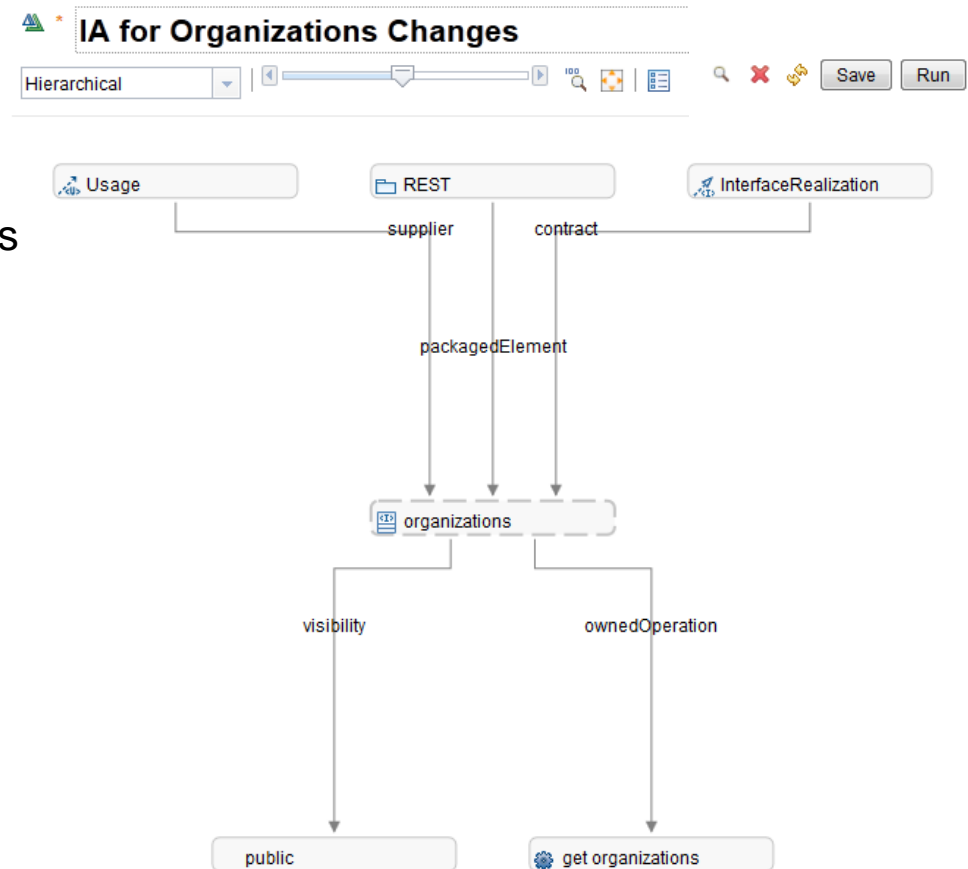
2011

2012

2013

### Understand the impact of design changes

- New graphical impact analysis diagram that includes **design and linked lifecycle** artifacts
- **Analysis Configuration** defines the parameters for the analysis
  - **Upstream** level, **downstream** level, which links types to include
  - Can be used be shared by multiple analysis
- **Analysis** applies the configuration to a selected element to perform the impact analysis
  - Save and re-run at a later time



## RSA and Rhapsody Design Manager Beta – What's New



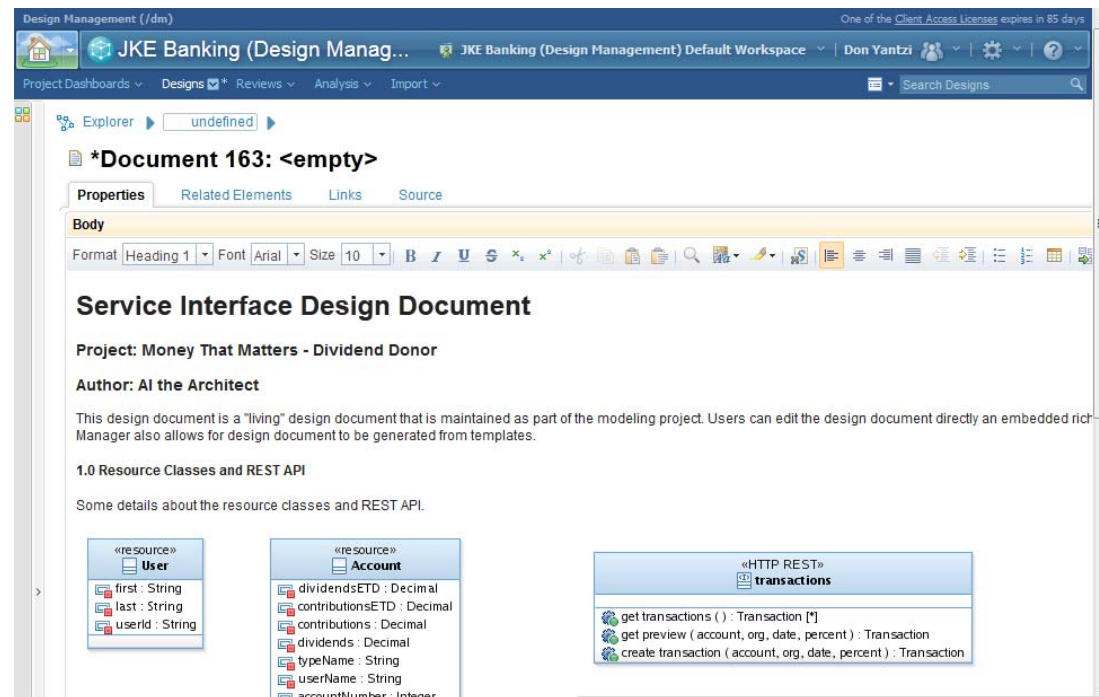
2011

2012

2013

### Document Your Designs

- Generate **documents from templates**
  - Author templates with RPE Document Studio
  - Configure and generate documents from templates in Design Manager
- Create **living design documents**
  - Rich text documents with embedded design links
  - Add to any design project
  - Keep current as designs change
  - Editable from the Web client
  - All the features of Design Management: linking, change control, searching, commenting, and design reviews





## RSA and Rhapsody Design Manager Beta – What's New



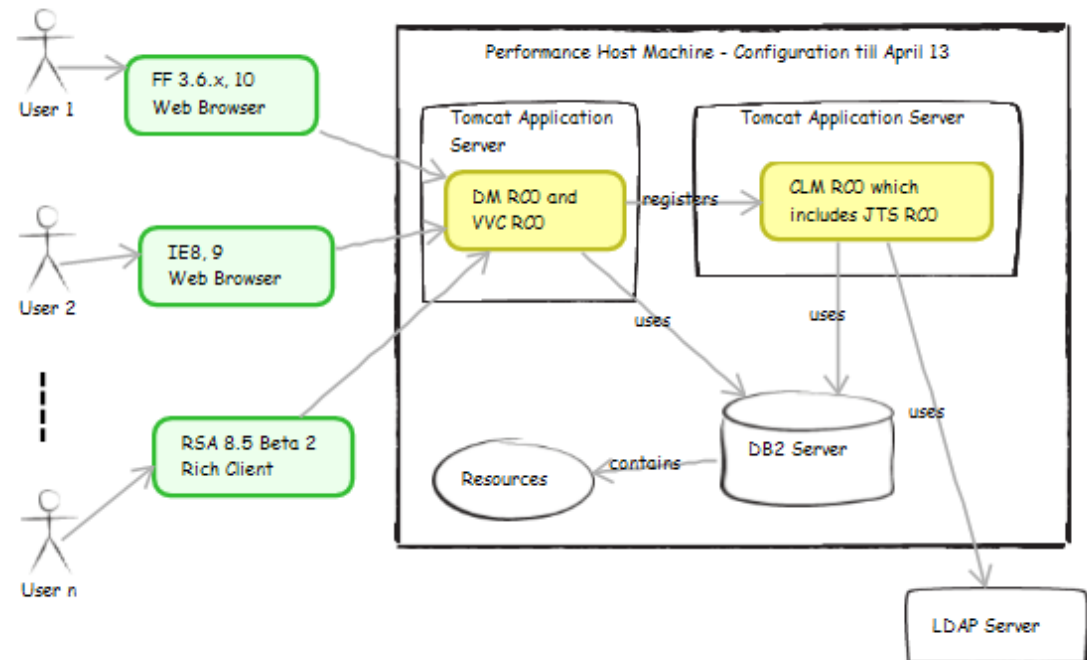
2011

2012

2013

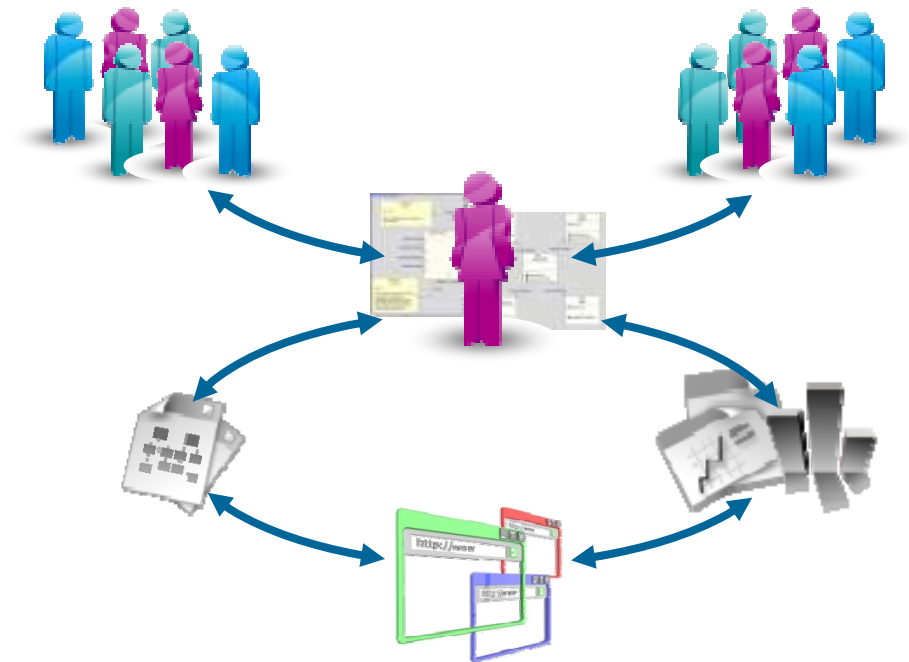
### Quickly capture and collaborate on ideas with design sketching

- Sketches are simple, independent diagrams
- Add to any design project
- Editable from the Web client
- All the features of Design Management: linking, change control, searching, commenting, and design reviews



## Summary

- Design Management helps teams to:
  - Collaborate and iterate on their software and systems designs
  - Integrate their designs and design process with the rest of the lifecycle
  - Produce better quality designs with less time
- Rational Software Architect Design Manager Beta and Rational Rhapsody Design Manager Beta contain lots of new and enhanced capabilities
  - Common administration with CLM
  - Lifecycle traceability
  - Model configuration management
  - Impact Analysis
  - Documenting designs
  - Design sketching
  - In-context design collaboration
  - Searching





[www.ibm/software/rational](http://www.ibm/software/rational)

© Copyright IBM Corporation 2011. All rights reserved. The information contained in these materials is provided for informational purposes only, and is provided AS IS without warranty of any kind, express or implied. IBM shall not be responsible for any damages arising out of the use of, or otherwise related to, these materials. Nothing contained in these materials is intended to, nor shall have the effect of, creating any warranties or representations from IBM or its suppliers or licensors, or altering the terms and conditions of the applicable license agreement governing the use of IBM software. References in these materials to IBM products, programs, or services do not imply that they will be available in all countries in which IBM operates. Product release dates and/or capabilities referenced in these materials may change at any time at IBM's sole discretion based on market opportunities or other factors, and are not intended to be a commitment to future product or feature availability in any way. IBM, the IBM logo, Rational, the Rational logo, Telelogic, the Telelogic logo, and other IBM products and services are trademarks of the International Business Machines Corporation, in the United States, other countries or both. Other company, product, or service names may be trademarks or service marks of others.

## Acknowledgements and disclaimers

**Availability:** References in this presentation to IBM products, programs, or services do not imply that they will be available in all countries in which IBM operates.

The workshops, sessions and materials have been prepared by IBM or the session speakers and reflect their own views. They are provided for informational purposes only, and are neither intended to, nor shall have the effect of being, legal or other guidance or advice to any participant. While efforts were made to verify the completeness and accuracy of the information contained in this presentation, it is provided AS-IS without warranty of any kind, express or implied. IBM shall not be responsible for any damages arising out of the use of, or otherwise related to, this presentation or any other materials. Nothing contained in this presentation is intended to, nor shall have the effect of, creating any warranties or representations from IBM or its suppliers or licensors, or altering the terms and conditions of the applicable license agreement governing the use of IBM software.

All customer examples described are presented as illustrations of how those customers have used IBM products and the results they may have achieved. Actual environmental costs and performance characteristics may vary by customer. Nothing contained in these materials is intended to, nor shall have the effect of, stating or implying that any activities undertaken by you will result in any specific sales, revenue growth or other results.

© **Copyright IBM Corporation 2012. All rights reserved.**

– **U.S. Government Users Restricted Rights - Use, duplication or disclosure restricted by GSA ADP Schedule Contract with IBM Corp.**

IBM, the IBM logo, ibm.com, Rational, the Rational logo, Telelogic, the Telelogic logo, Green Hat, the Green Hat logo, and other IBM products and services are trademarks or registered trademarks of International Business Machines Corporation in the United States, other countries, or both. If these and other IBM trademarked terms are marked on their first occurrence in this information with a trademark symbol (® or ™), these symbols indicate U.S. registered or common law trademarks owned by IBM at the time this information was published. Such trademarks may also be registered or common law trademarks in other countries. A current list of IBM trademarks is available on the Web at “Copyright and trademark information” at [www.ibm.com/legal/copytrade.shtml](http://www.ibm.com/legal/copytrade.shtml)

Other company, product, or service names may be trademarks or service marks of others.