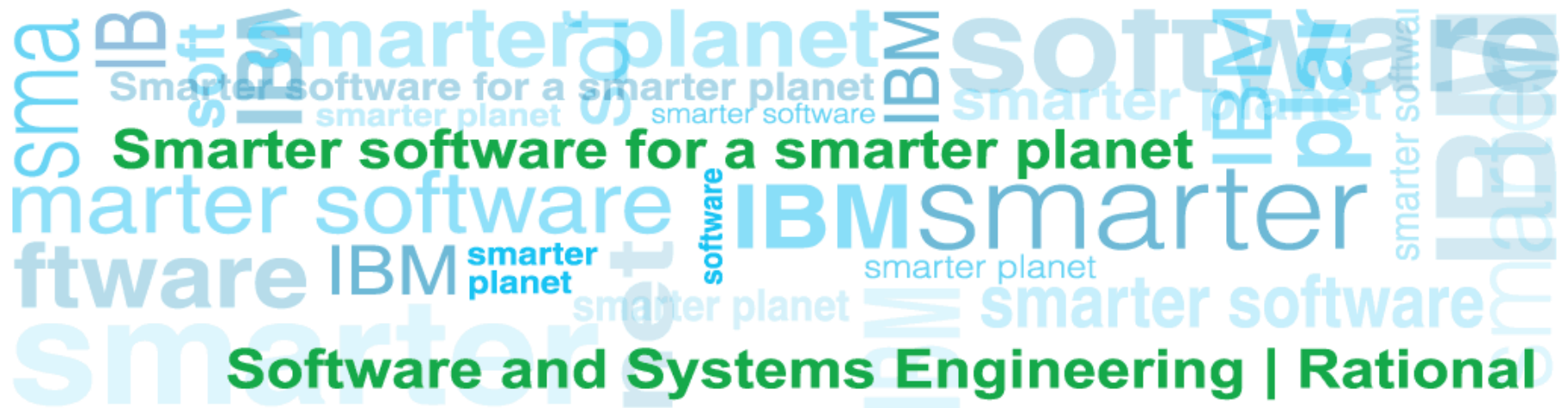
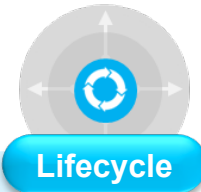


What's New in CLM 2012

Announced June 4, 2012



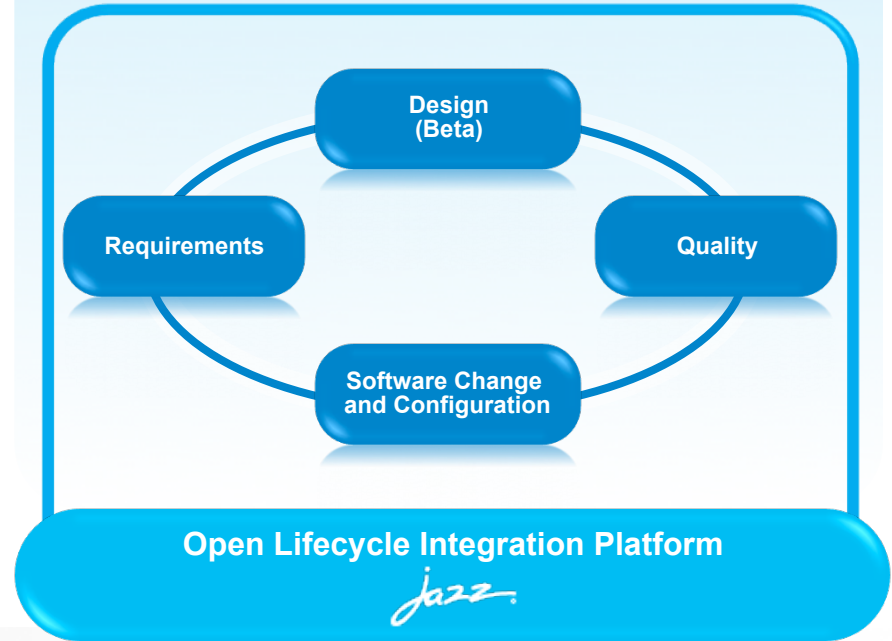
Integrated and effective Application Lifecycle Management



Enhanced and expanded for accelerated delivery of quality software

- Centralized administration, evaluation and roll-out capabilities for faster, easier, incremental deployments
- Incremental, flexible upgrade allows each role on a team to upgrade at their own pace
- Integrated software design for broader collaboration and traceability
- Optimized support for Mobile, SAP and IBM WebSphere Application Server

IBM Rational Solution for Collaborative Lifecycle Management



NEW

- IBM Solution for Collaborative Lifecycle Management
 - Comprised of Rational Requirements Composer v4.0, Rational Team Concert v4.0, and Rational Quality Manager v4.0
 - [New Rational Software Architect integration through Rational Software Architect Design Manager](#) (Beta)

“Once fully implemented, we expect to reduce friction, provide value to customers in each delivery stream, reduce rework by improving end-to-end collaboration and planning consistency, and reduce compliance efforts by automating key process tasks and deliverables.”

– Stephan Pauletto, Engagement Manager, IMS Health

CLM 2012

2011

2012

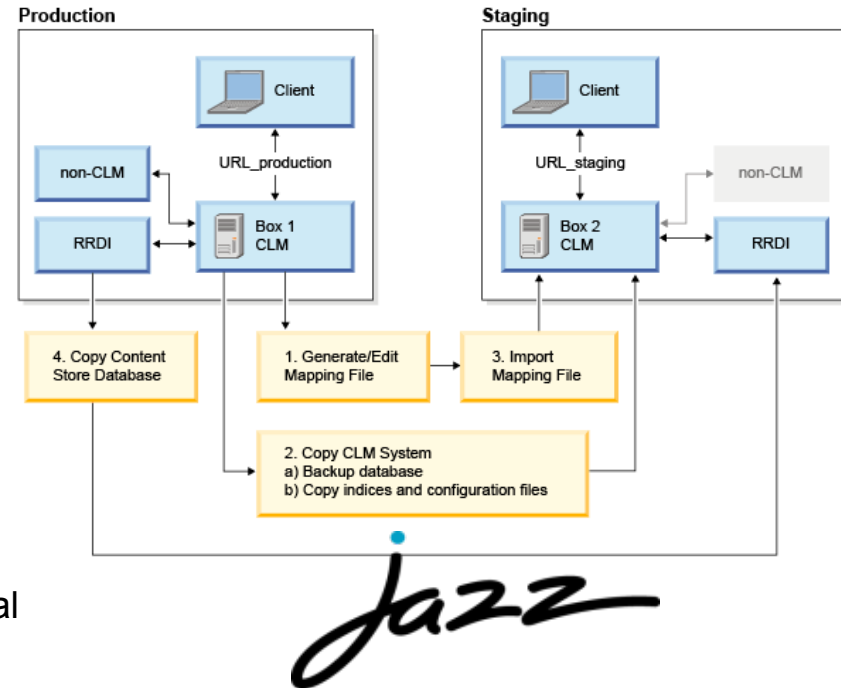
2013

Server Rename

- Support server URL rename use cases as follows:
 - Production to Staging
 - Pilot to Production
- Prerequisite:** Requires a freely available key file from support to activate capability

Improved reporting with RRDG and RRD I

- Common RRDG UI across RQM, RRC and RTC
- Newly available reports, such as customizable workflow states (RQM), iteration hierarchies (RTC, RQM), additional link types (RRC) and more
- Easier, faster RRD I install, setup and configuration



CLM 2012

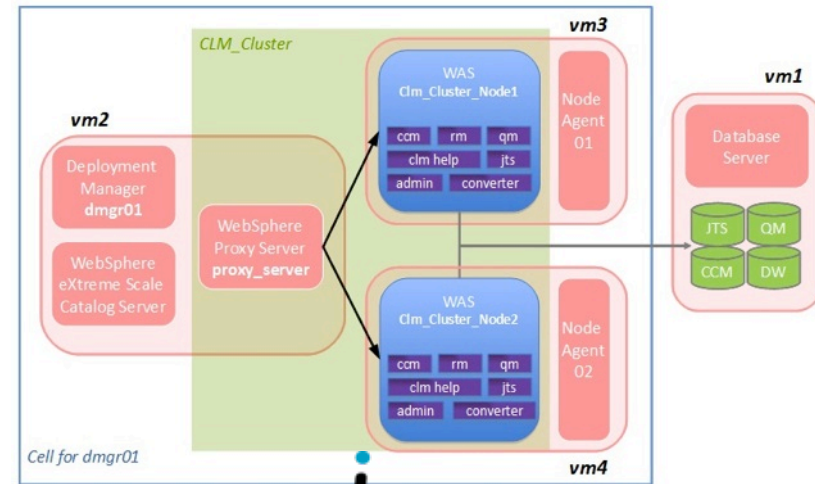
2011

2012

2013

CLM High Availability / Clustering on WAS

- Enable WAS based High Availability via Clustering
- Redundant application/JTS instances sharing central DB
- Front load balancer dispatching, providing automatic failover
 - For subsequent HTTP requests
- WAS supported cluster solution is WAS ND:
 - Deployment management
 - Workload management
 - Session failover



Jazz

- WebSphere eXtreme Scale is the technology Jazz will leverage for a shared look-aside cache – Object Grid – we expect to include this in CLM 2012 (bundled) for use only by Jazz/CLM applications.
- Only supported only supported on AIX and non virtualized Linux.

Prerequisite: Will require licensed WAS-ND (which will not be bundled with CLM v4) also will require a freely available key file from support to activate capability

CLM 2012

2011

2012

2013

- **CLM extended with Design Management (beta)**

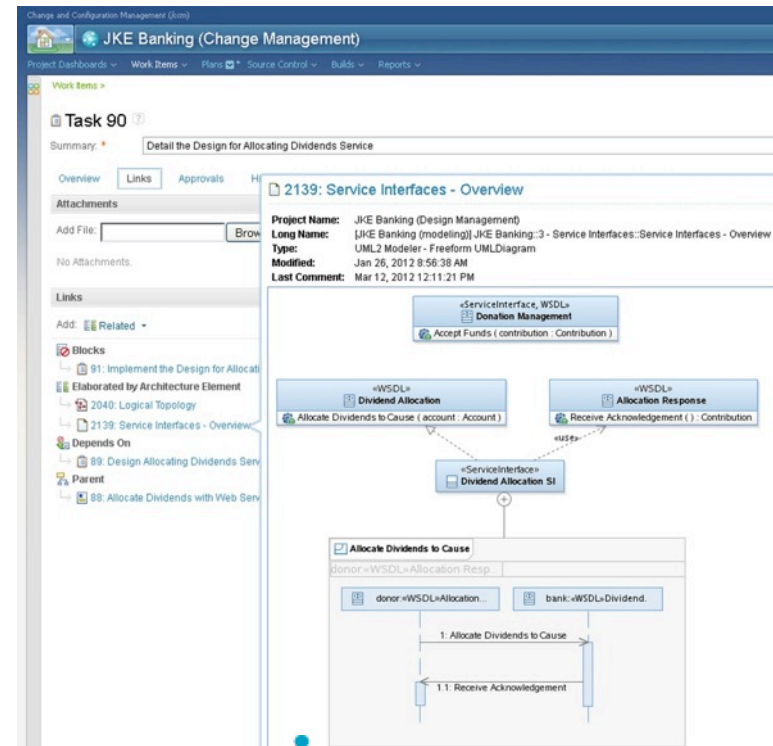
 - Involve stakeholders from across the organization and beyond in the design process using new Rational Software Architect with Design Manager integration.

- **Support rolling upgrade capability (N-1) for CLM**

 - I can upgrade my Jazz Team Server and support both RTC 3.0.1 and RTC 3.Next clients
 - I can upgrade one CLM application at a time (rather than having to do all at once)
 - Allow RTC, RQM, RRC to upgrade incrementally

- **Simpler, faster upgrades and deployments**

 - Automated WAS deployments
 - JTS Expresss
 - Accelerated data migration

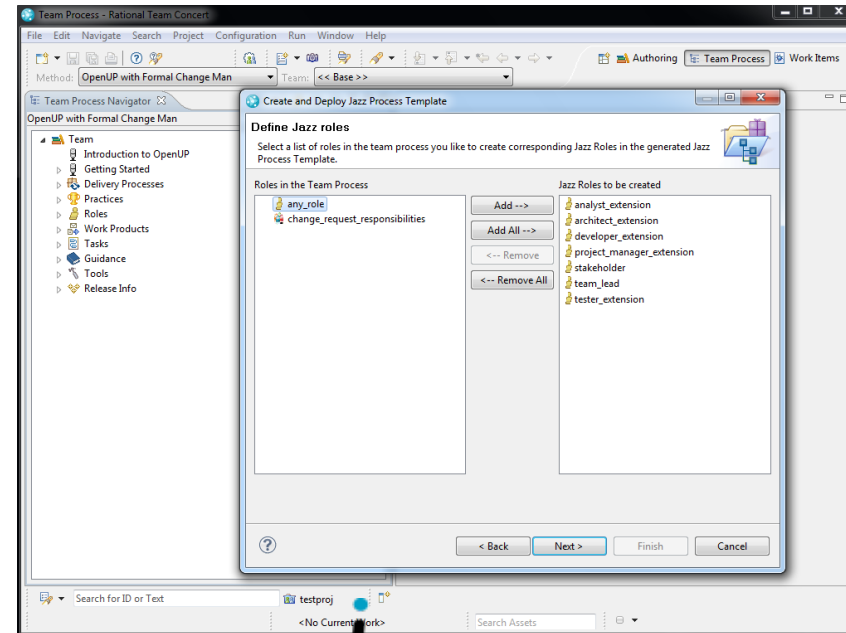


Cross Repository Process Inheritance

- I can share a project's process template across multiple JTS servers
- Today this sharing can only occur in RTC 3.x on the same RTC/JTS repository

Enhanced RMC-CLM interoperability for process enactment

- Create and deploy Jazz process templates based on, and linked to, a method configuration
- Generate and deploy work item templates to existing Jazz project areas to jumpstart plans based on proven patterns of success
- Create new Jazz Roles, Work Item Types and Work Items in existing Jazz project areas based on, and linked to, item descriptions from RMC



Jazz

CLM 2012

2011

2012

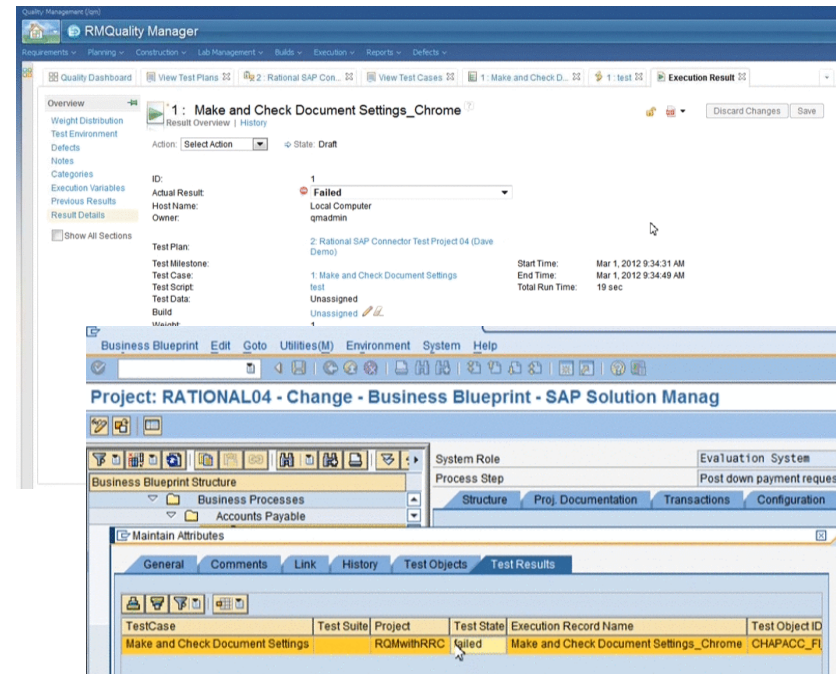
2013

CLM for Mobile

- Lifecycle management integration with IBM Mobile Platform
- Community support for RTC Eclipse client (English only) and build engine on MacOS and and CLM 4.0 web clients on Safari / MacOS

Enhanced CLM for SAP

- OSLC-based integration via Rational SAP Solution Manager Connector supports Rational Requirements Composer, Rational Quality Manager and Rational Team Concert.
- New integration between SAP Business Process Change Analyzer and RQM.



CLM 2012 – UI Consistency and Navigation Improvements

2011



2012

2013

Breadcrumb example in Rational Requirements Composer – Requirements Document

JKE Banking (Requirements) > JKE Business Recovery Matters Project > Business Goals >

No Tags De

93: Accelerate economic recovery



View As: General Group By: Ungrouped

Show All Items per page

Previous | 1 | Next

ID	Pri	Name	State	Owner	Iteration
----	-----	------	-------	-------	-----------

2		System Verification	Under P		
1		Development Test	Draft		
		User Acceptance	Draft		
		Master Test Strategy	Approve		
		My New Test Plan	Draft		

- Delete Test Plan
- Duplicate Test Plan
- Print PDF
- Review Test Plan

1 item(s) selected
Showing 1-5 of 5 items

Construction Lab Management Builds Execution Reports Change Requests

Browse

- Test Cases
- Test Scripts
- Test Suites
- Test Data
- Keywords

Create

- Test Case
- Test Script
- Test Suite
- Test Case Execution Record
- Test Suite Execution Record
- Test Data

Import

- Test Cases
- Test Scripts

Manage

- Manage Artifact Templates

Recently Viewed (6)

- 18: Dividend Allocation by Percentage
- 4: Allocate_Dividends_to_a_Single_Cause_Firefox_DB2_WAS_Windows_Execution
- 16: Donor dividend allocation conforms to stated criteria
- 2: Sprint 1 SVT Test - Money that Matters
- 2: Donors Deposit Money Into a Pooled Assistance Fund
- My execution record

Recent Queries (1)

- Browse Test Cases

PROJECT DETAILS

Plan

No plan selected. [Select a plan.](#)

Timelines

Main Development

- development
- stabilization

[View All Timelines >](#)

Members (9)

Showing 9 of 9 members.
[See the Project Area to view all members.](#)

CLM 2012: What's New Summary

2011

2012

2013

- **Server Rename**
 - Scenarios supported: Production to Staging, Pilot to Production
- **Improved reporting with RRDG and RRDl**
 - Consistent RRDG across CLM, improved install and configuration for RRDl
- **CLM High Availability / Clustering on WAS**
 - Front load balancer dispatching, providing automatic failover
- **Support rolling upgrade capability (N-1) for CLM**
 - Coexistence of 3.0.1 and 4.x clients, upgrade incrementally
- **CLM extended with Design Management (beta)**
 - Design Management integrated into the lifecycle
- **Simpler, faster upgrades and deployments**
 - Automated WAS deployments, JTS Express Setup, accelerated data migration
- **Cross Repository Process Inheritance**
 - Share a project's process template across multiple JTS servers
- **CLM for Mobile**
 - Lifecycle management integration with IBM Mobile Platform
- **Enhanced CLM for SAP**
 - Lifecycle management for SAP extended with support for RTC and RRC
- **And...many new benefits in 4.0 versions for RRC, RTC, and RQM!**





www.ibm/software/rational

© Copyright IBM Corporation 2011. All rights reserved. The information contained in these materials is provided for informational purposes only, and is provided AS IS without warranty of any kind, express or implied. IBM shall not be responsible for any damages arising out of the use of, or otherwise related to, these materials. Nothing contained in these materials is intended to, nor shall have the effect of, creating any warranties or representations from IBM or its suppliers or licensors, or altering the terms and conditions of the applicable license agreement governing the use of IBM software. References in these materials to IBM products, programs, or services do not imply that they will be available in all countries in which IBM operates. Product release dates and/or capabilities referenced in these materials may change at any time at IBM's sole discretion based on market opportunities or other factors, and are not intended to be a commitment to future product or feature availability in any way. IBM, the IBM logo, Rational, the Rational logo, Telelogic, the Telelogic logo, and other IBM products and services are trademarks of the International Business Machines Corporation, in the United States, other countries or both. Other company, product, or service names may be trademarks or service marks of others.