



IBM Software Group

IBM Rational Team Concert

What's new in Release 2.0

Rational. software



Innovation for a smarter planet

© 2009 IBM Corporation

What's coming up in RTC 2.0?

- ***Deliver Global Enterprise Readiness***
- ***Enhanced agile planning via web***
- ***Support Collaborative ALM***
- ***Support growth of a vibrant Ecosystem***
- ***Bridges to your existing environments***
- ***Other Enhancements***



Driving Business Differentiation



What's coming up in RTC 2.0?

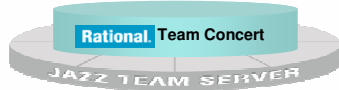
- ***Deliver Global Enterprise Readiness***
 - ▶ Enhanced Scalability and Extensibility
 - ▶ Enhanced Security
 - ▶ High Availability
- ***Enhanced agile planning via web***
- ***Support Collaborative ALM***
- ***Support growth of a vibrant Ecosystem***
- ***Bridges to your existing environments***
- ***Other Enhancements***



Driving Business Differentiation



Enterprise Scalability for Team Concert

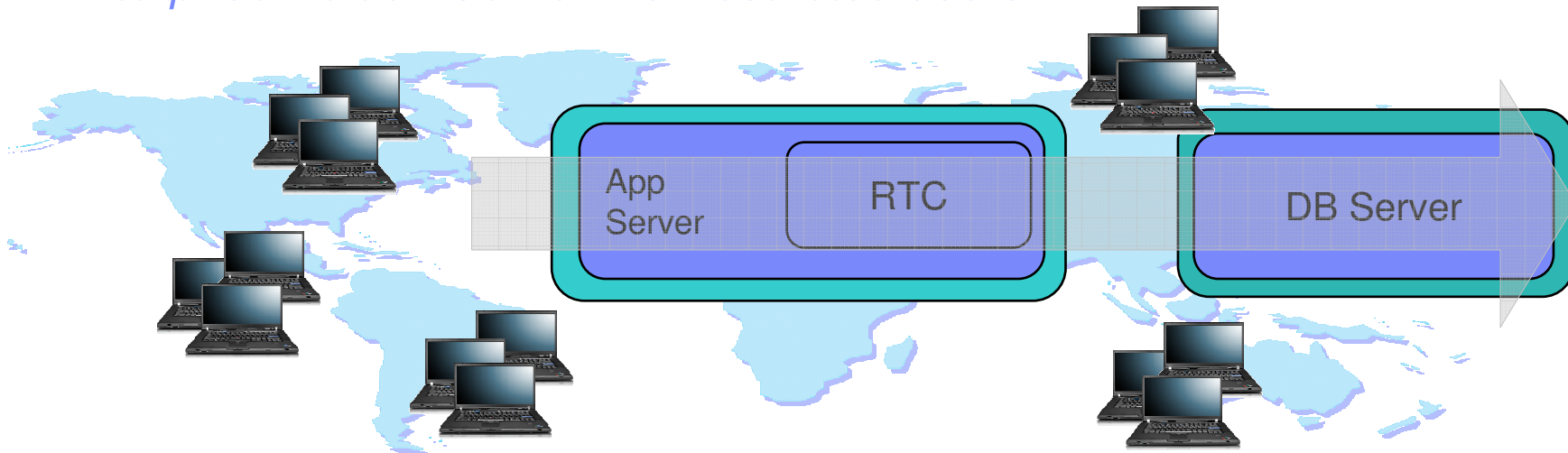


	Express-C	Express	Standard	Enterprise
	Small Teams <ul style="list-style-type: none"> Quick Start Collaborative ALM Open source servers 	Mid Sized Teams <ul style="list-style-type: none"> Project Dashboards Collaborative ALM Commercial Middleware 	Corporate Teams <ul style="list-style-type: none"> Customizable workflow Advanced Reporting Departmental Scaling 	Enterprise Teams <ul style="list-style-type: none"> Customizable Workflow Advanced Reporting High Availability Unrestricted scaling based on hardware
Maximum developers/contributors	10 / unrestricted	50 / unrestricted	250 / unrestricted	Unrestricted / unrestricted
Database	Derby Only	Derby, DB2, Oracle, SQLServer	Derby, DB2, Oracle, SQLServer	Derby, DB2, Oracle, SQLServer
Application Server	Tomcat Only	Tomcat, WebSphere	Tomcat, WebSphere	Tomcat, WebSphere
<ul style="list-style-type: none"> Agile planning: daily, iteration, release SCM -Stream and component based Builds – w/ Continuous Integration Work items w/ custom attributes, presentation, discussion, approvals Customizable Process Templates Project Milestone Tracking & Status Subversion Integration Bridge Role-based process permissions Project level permissions Cross project dashboards Cross repository dashboards 	✓	✓	✓	✓
Customizable Dashboard Mashups	1 per project	1 per project	unlimited project, team, and personal dashboards	unlimited project, team, and personal dashboards
Advanced Reports and Customization			✓	✓
Customizable work item workflow			✓	✓
Plan risk assessment			✓	✓
CC/CQ Connectors and Bridges			✓	✓
Floating Licenses Available			✓	✓
LDAP import / synchronize			✓	✓
HTTP proxy support			✓	✓
High Availability				✓*

* See [Jazz.net](http://jazz.net) for prerequisites



Scale to New Heights with Rational Team Concert *Enterprise Edition Server – unrestricted users*



- **Scales to your server hardware**

- ▶ Thousands of users
- ▶ Millions of files and work items
- ▶ Unlimited file size
- ▶ Hundreds of builds

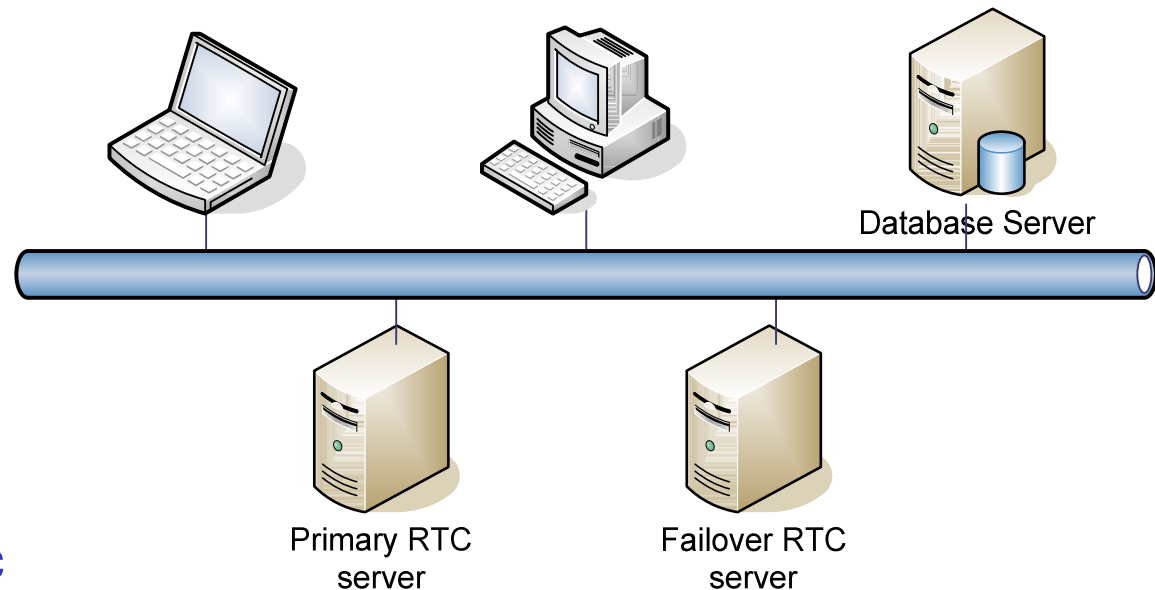
- New 64-bit server support
- New hardware platform support
 - ▶ IBM System p

Consolidate & Lower TCO by deploying
a centralized, consumable,
infrastructure.

[More details here](#)



Basic High Availability *Supported in Enterprise Edition*



Provides critical availability for enterprise customers with automatic failover on hardware failure, software server crash, or other outage


Entitles installation of a second copy of the server in an idle standby application server failover configuration. Requires WebSphere Application Server and optional high availability database configuration (DB2, Oracle, SQL Server).



Fine Grained Access Control for Project Areas

- The project area editor in the web UI now has an access control page
- You can now configure read access control at the project area level
 - ▶ For everyone
 - ▶ For all members of the entire project area hierarchy
 - ▶ For a specific list of users
- Support for working across private and public project areas
 - ▶ Source code kept private, but enable work items to be public for broader collaboration.

Active Project Areas >

 * AProj

Overview Permissions **Access Control**

Access Control

Configure which users have read access to the project area and its artifacts.

☐ Grant read access to everyone
☒ Grant limited read access

- ☐ Grant read access to members of the project area hierarchy
- ☒ Grant read access to a specific list of users

☐ Grant access to repository administrators only

Members Pending To Add

Name	User ID
TestJazzAdmin1	TestJazzAdmin1

Members Pending To Remove

Name	User ID
TestJazzAdmin2	TestJazzAdmin2

Members with Read Access

Previous | 1 - 6 of 6 | Next

Name	User ID
TestJazzAdmin2	TestJazzAdmin2
TestJazzGuest1	TestJazzGuest1
TestJazzGuest2	TestJazzGuest2
TestJazzNoGroups	TestJazzNoGroups



What's coming up in RTC 2.0?

- ***Deliver Global Enterprise Readiness***
- ***Enhanced agile planning via web***
 - ▶ Improved SCRUM support
 - Release Planning
 - Taskboards for sprint tracking
 - Backlog plan mode
 - ▶ Plan risk assessment
- ***Support Collaborative ALM***
- ***Support growth of a vibrant Ecosystem***
- ***Bridges to your existing environments***
- ***Other Enhancements***

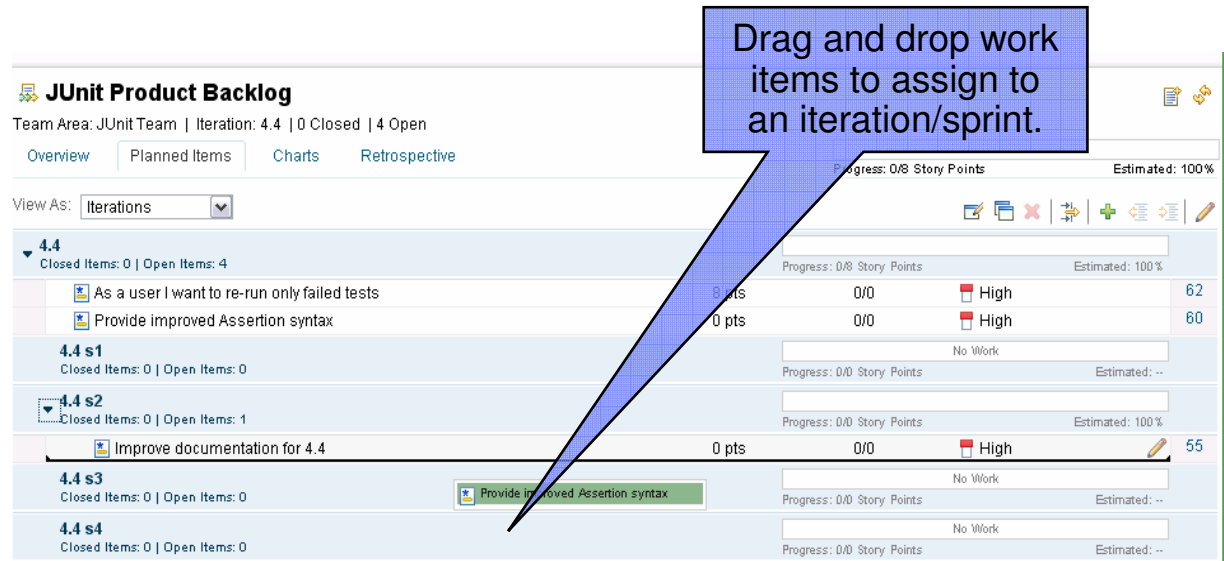


Driving Business Differentiation



Coverage of all agile levels of the “Planning Onion”

- The Planning Onion
(Mike Cohn Agile Estimating and Planning)
 - ▶ Daily (my work view)
 - ▶ Iteration
 - ▶ Release (new in 2.0)
- Release 2.0 adds release planning and now covers all levels of the Onion
 - ▶ View by iteration to see roadmap of the planned work
 - ▶ Web UI enables product owner to work on backlog without an eclipse install



JUnit Product Backlog
Team Area: JUnit Team | Iteration: 4.4 | 0 Closed | 4 Open

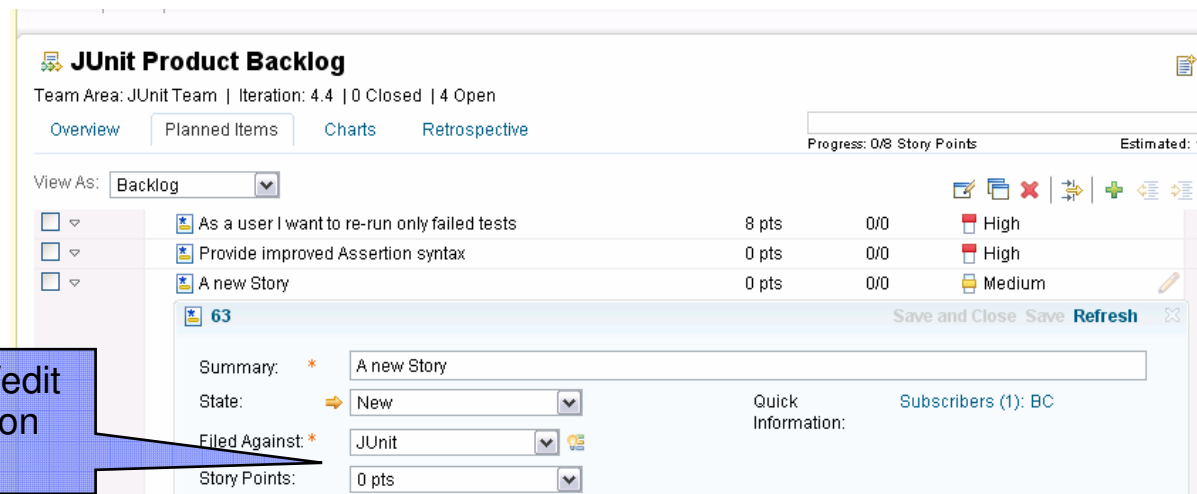
Overview | Planned Items | Charts | Retrospective

View As: Iterations

4.4
Closed Items: 0 | Open Items: 4

Item	Points	Progress	Priority	Estimate
As a user I want to re-run only failed tests	8 pts	0/0	High	62
Provide improved Assertion syntax	0 pts	0/0	High	60
4.4 s1 Closed Items: 0 Open Items: 0		Progress: 0/0 Story Points	No Work	Estimated: --
4.4 s2 Closed Items: 0 Open Items: 1		Progress: 0/0 Story Points	No Work	Estimated: 100%
Improve documentation for 4.4	0 pts	0/0	High	55
4.4 s3 Closed Items: 0 Open Items: 0		Progress: 0/0 Story Points	No Work	Estimated: --
4.4 s4 Closed Items: 0 Open Items: 0		Progress: 0/0 Story Points	No Work	Estimated: --

In-line creation/edit of work items on plan.



JUnit Product Backlog
Team Area: JUnit Team | Iteration: 4.4 | 0 Closed | 4 Open

Overview | Planned Items | Charts | Retrospective

View As: Backlog

Item	Points	Progress	Priority
As a user I want to re-run only failed tests	8 pts	0/0	High
Provide improved Assertion syntax	0 pts	0/0	High
A new Story	0 pts	0/0	Medium

63

Summary: * A new Story

State: New

Filed Against: * JUnit

Story Points: 0 pts

Quick Information: Subscribers (1): BC

Save and Close Save Refresh



Taskboards track Work in Progress

Accelerate stand-up meetings, increased transparency

See the work currently in progress

Markus Kent Closed Items: 4 Open Items: 7		Progress: 0.25 h Estimated: 71%	
To Do		In Progress	Done
<div>← Improve documentation for 4.4 55</div> <div>← Provide improved Assertion syntax 60</div>	<div> javadoc updates for @Ignore in 4.3 30</div> <div> Based on the assertThat syntax we should provide assumptions and theories support 59</div>	<div> assertArrayEquals misses differences</div>	<div> [Docs] Cookbook TestRunner section incorrect 23</div> <div> shows green bar while assert false 41</div> <div> Should not call derived's after if super's before failed 17</div> <div> @After method not called after my test timeout in 4.3.1 16</div>
	<div> assertArrayEquals misses differences 7</div> <div> testCount hard-coded to 1 for childless Description 27</div> <div> Tests on protected methods fail 14</div> <div> assertThat fails with Class tests (documentation problem) 10</div>		

Drag and drop work items to change their state.



Backlog Plan Mode

Easily rank work items to define priority

- Ideal for managing SCRUM backlog
- Support coarse & fine grained prioritization
- Ranking is reflected in all planning views, e.g. iteration plans and release plans

JUnit Product Backlog
Team Area: JUnit Team | Iteration: 4.4 | 0 Closed | 4 Open

Overview | **Planned Items** | Charts | Retrospective

Progress: 0/8 Story Points | Estimated: 100%

View As: Backlog

Drag and drop work items to rank them relative to others.

Work Item	Points	Progress	Priority	Score
As a user I want to re-run only failed tests	8 pts	0/0	High	62
Provide improved Assertion syntax	0 pts	0/0	High	60
Improve documentation for 4.4	0 pts	0/0	Medium	55
No download link to latest version			Medium	12



Plan Risk Assessment

Helps teams identify tasks with high risk items early

The screenshot displays the 'Work Items RC1' application interface. At the top, it shows the team area 'Work Item' and iteration '2.0 RC1 (4/27/09 - 5/22/09)'. The progress bar indicates 0/303.5h. The main table lists tasks with columns for priority, status, duration, and estimated time. A red circle highlights a task with a 'High' risk level and a duration of '1 hour'. A blue callout box points to the 'High' risk level, stating 'Color codes high risk tasks for quick identification and action'. Another blue callout box points to the '1 hour' duration, stating 'More detailed developer estimation.. low, nominal, high'. A third blue callout box points to the 'Estimated' column, stating 'Automatically calculates probability of task fitting into the schedule'.

Task	Priority	Status	Duration	Estimated
Resource link for enhanced hovers in Work Item web	High	Open	2 hours	71777
Move to 'Project Area' functionality on the service layer	High	Open	3 days	77066
OSLC CH usage of namespaces, no prefixes and media	High	Open	2 hours	77921
00000001-0545: Incident tests URIServiceTest.testCommentU	High	Open	2 days	76899
WorkflowInfo on ResourceItem is not updated on project area move	Medium	Open	2 hours	77291
Align ROA collection with OSLC's Atom feeds and RDF Bags	Medium	Open	2 days	69970
Consider to surface links as attributes in the ResourceItem	High	Open	4 hours	70731
WorkItem REST API shall also expose the 'Included in Bulk' link	High	Open	1 day	73229
Preserve Mentioned By links when their target is protected	Medium	Open	2 hours	69997
OSLC/REST cleanup	High	Open	1 hour	77322
Check enforcement of permissions for Web UI bulk operation	Medium	Open	4 hours	77096
Dependency on REST Client/Descriptor migration problem	Medium	Open	1 hour	68972
PUT/POST	Medium	Open	4 hours	61246
Test behavior of service work item in the	Unassigned	Open	2 days	61247
Message of code message returned to the Web UI	Medium	Open	2 hours	74890
Fulltext search was scoped by	Unassigned	Open	4 hours	74767

Web based Build Management

- From Team Concert Web UI:
 - ▶ Request new build
 - ▶ Request rebuild of existing build
- Exposes build facilities to wider community
- Provides access to build function from any desktop

Build Definitions > com.example.integration >

Submit

Request Build

Build: [com.example.integration](#)

Build Options

☒ Personal Build

Repository Workspace:*

Browse

Build Properties

Name: Value:

Remove

Description:

Add

Submit



What's coming up in RTC 2.0?

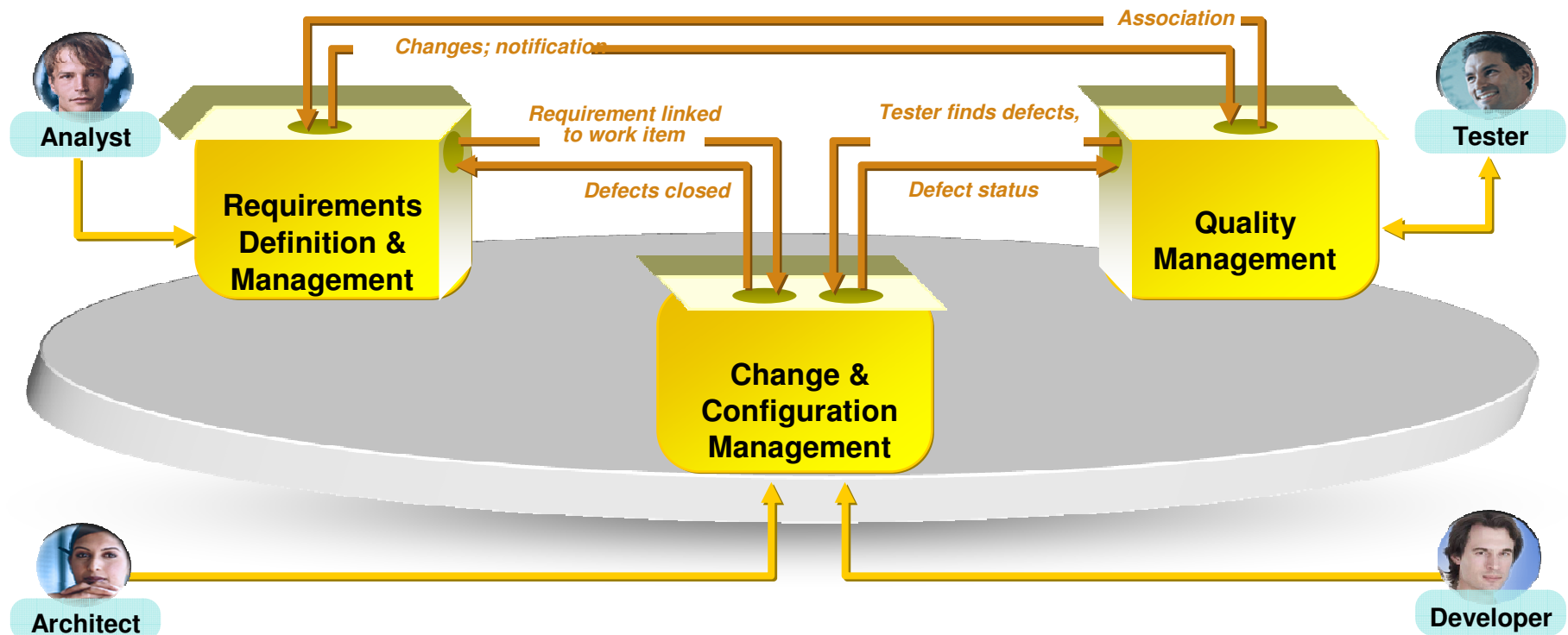
- *Deliver Global Enterprise Readiness*
- *Enhanced agile planning via web*
- ***Support Collaborative ALM***
 - ▶ Tighter RQM and RRC integrations
 - ▶ Cross repository and cross project dashboards
- *Support growth of a vibrant Ecosystem*
- *Bridges to your existing environments*
- *Other Enhancements*



Driving Business Differentiation



Collaborative ALM connects Analysts, Developers and Testers



- **Coordinate analysts, developers and testers**
 - Collaborate in context and track status
- **Align teams on project plans**
 - Which requirements are in the development plan?

- **Track builds and the impact of defects**
 - What build is ready for test?
 - What defects are blocking test from proceeding?
- **Track status with C/ALM dashboard mashups**
 - Transparency across teams and artifacts



Establish Traceability Links

The image displays two screenshots of IBM Rational software interfaces. The top screenshot shows the 'Rational Quality Manager' interface with a 'Plan Item' dialog box open. The bottom screenshot shows the 'Rational Team Concert' interface with a 'Defect 57' view.

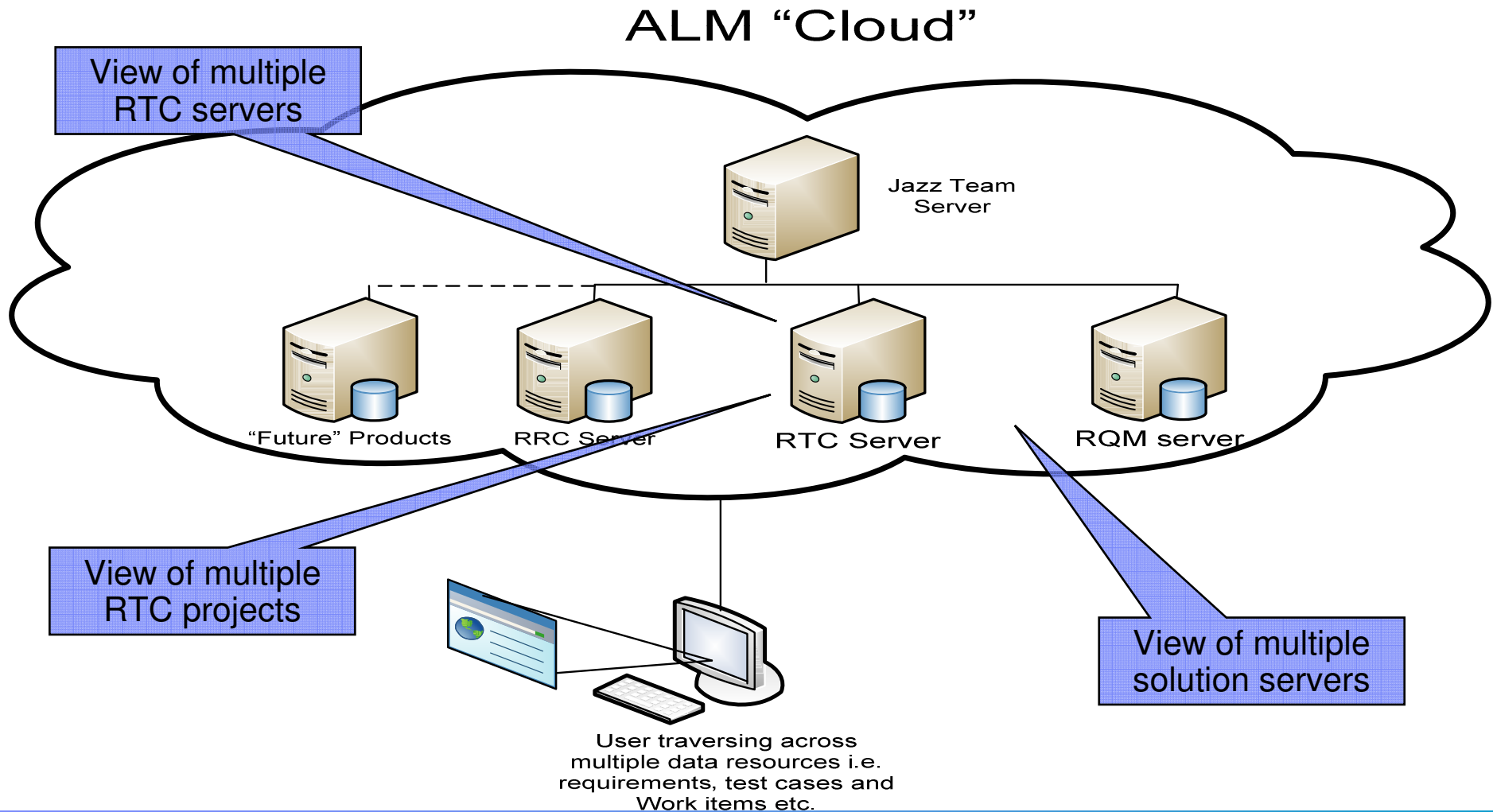
Annotations:

- Link to RTC Work item:** A callout pointing to the 'Plan Item' dialog box in the Rational Quality Manager interface.
- Rich hovers show the state of the linked items:** A callout pointing to the 'Plan Item' dialog box in the Rational Quality Manager interface.
- Associate work item with test case:** A callout pointing to the 'Plan Item' dialog box in the Rational Quality Manager interface.
- Link from work item to test execution result:** A callout pointing to the 'Related Execution Results' section in the Rational Team Concert interface.



Surfing the ALM Web

Dashboards across servers & projects



What's coming up in RTC 2.0?

- *Deliver Global Enterprise Readiness*
- *Enhanced agile planning via web*
- *Support Collaborative ALM*
- ***Support growth of a vibrant Ecosystem***
 - ▶ Documented API's for SDK
- *Bridges to your existing environments*
- *Other Enhancements*

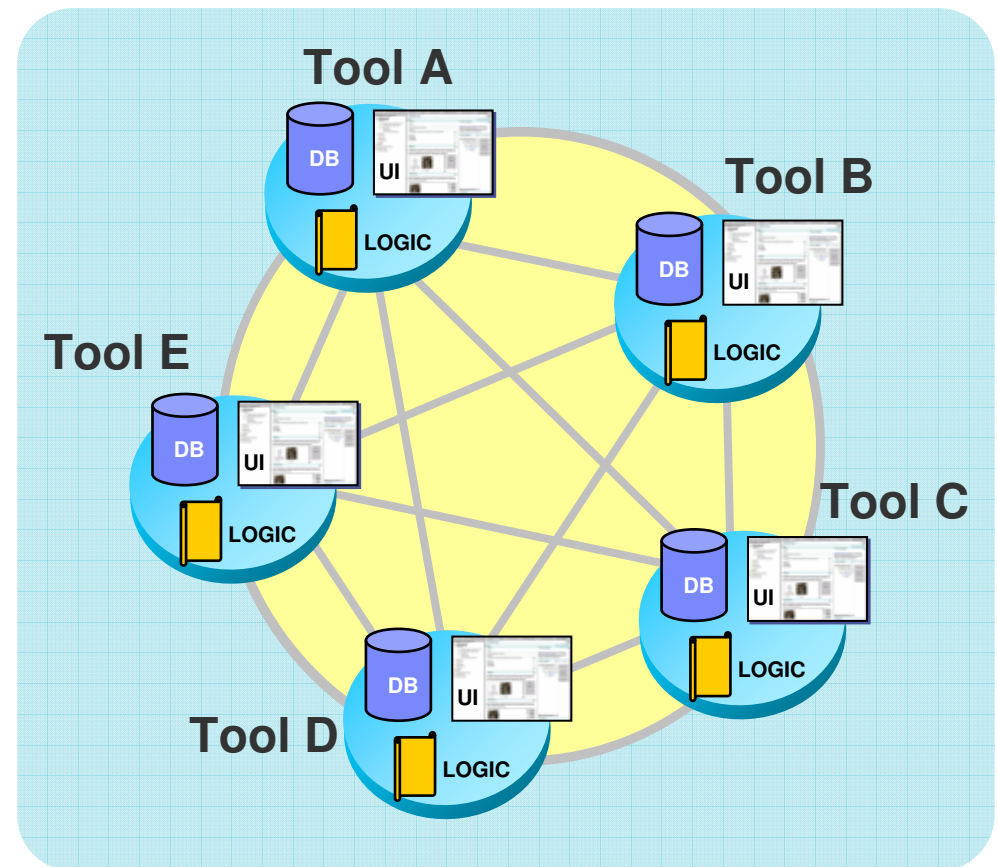


Driving Business Differentiation

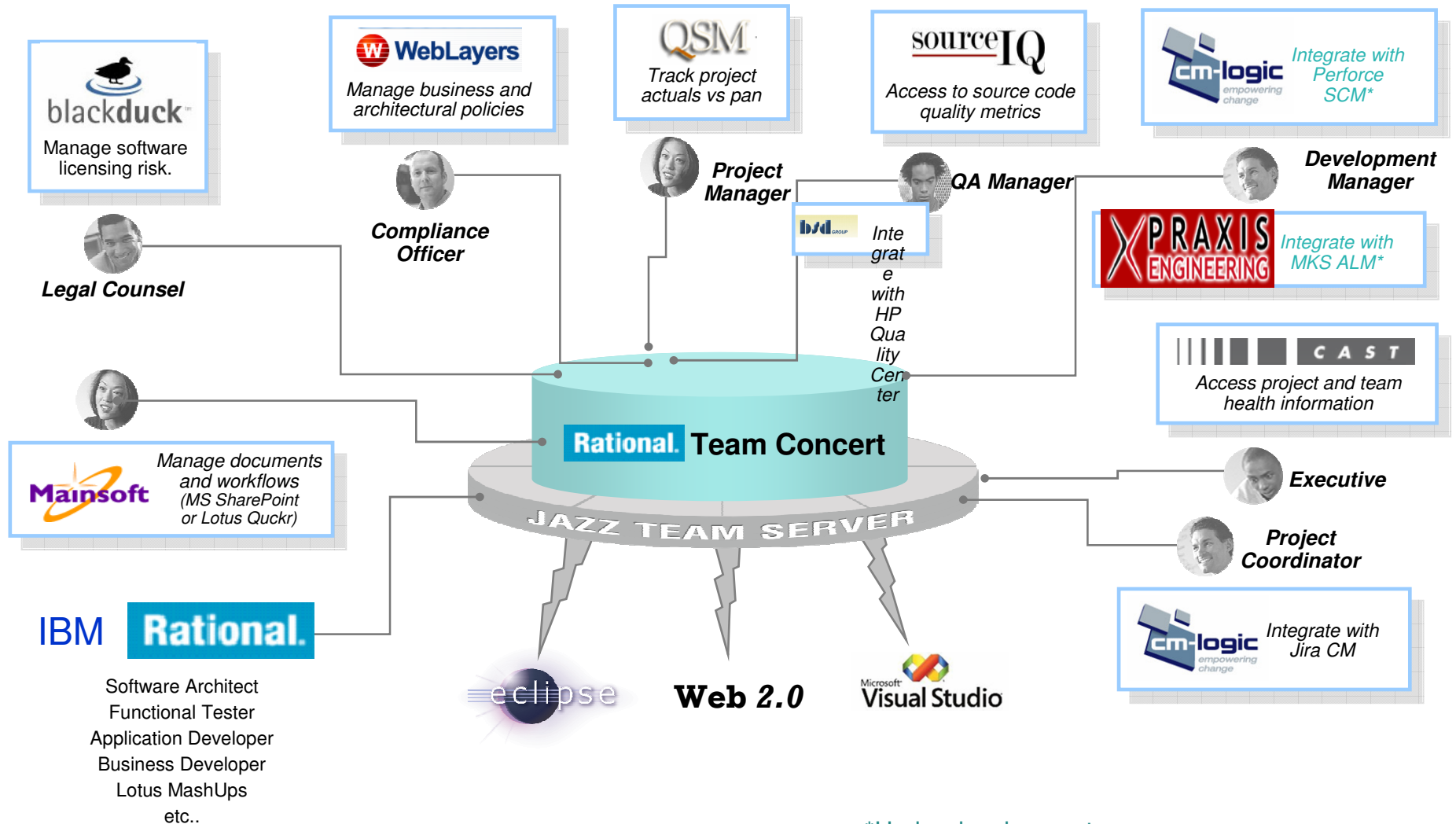


Release 2.0 API's available for extensibility

- Release 2.0 SDK supports
 - ▶ Creating and managing work items
 - ▶ Creating and managing source control artifacts
 - ▶ Creating importers from other source control systems
 - ▶ Integrations with other Jazz Foundation solutions
 - ▶ And more...
- More details to follow with on-line wiki's, documentation etc...



A Growing Ecosystem of Rational Team Concert Partners



What's coming up in RTC 2.0?

- *Deliver Global Enterprise Readiness*
- *Enhanced agile planning via web*
- *Support Collaborative ALM*
- *Support growth of a vibrant Ecosystem*
- ***Bridges to your existing environments***
 - ▶ Enhanced client for Visual Studio IDE
 - ▶ ClearCase/Work Item Bridge
 - ▶ ClearQuest linkage to work items
 - ▶ Importers for data migration
- ***Other Enhancements***

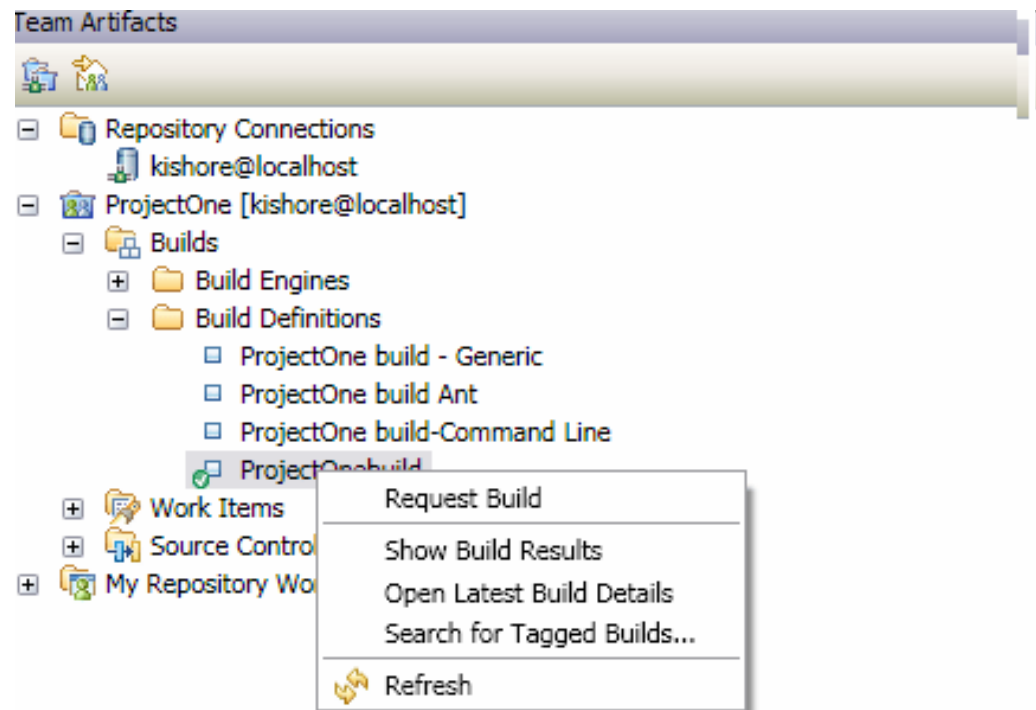


Driving Business Differentiation

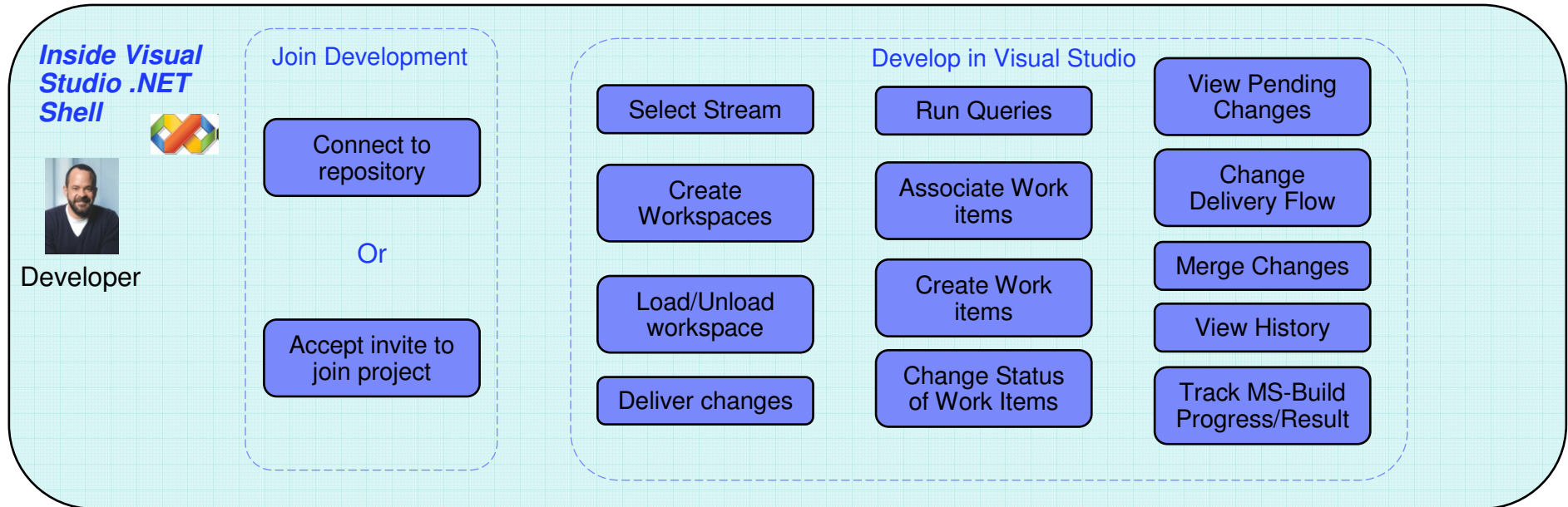


Enhanced Visual Studio IDE : Jazz Build Support

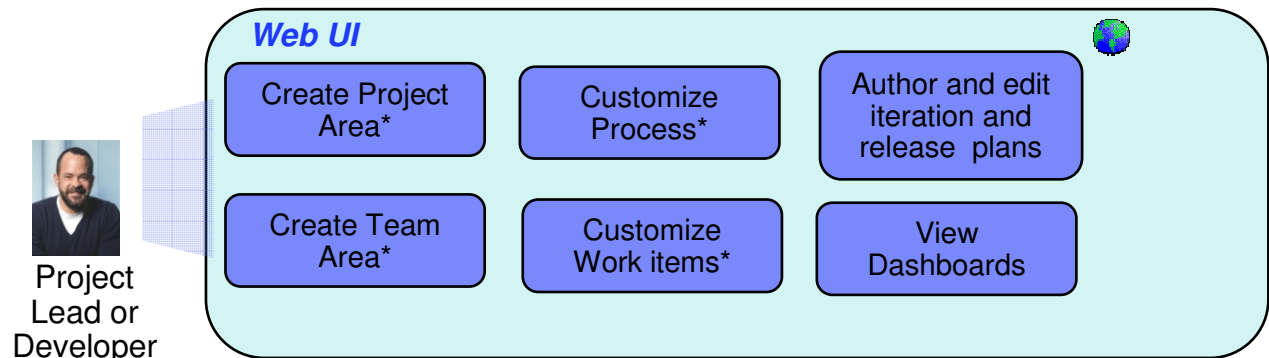
- Expose Jazz build to Visual Studio developers
 - ▶ MS-Build support
 - ▶ Build Request
 - ▶ Build History view
 - ▶ Build queue view
 - ▶ Build activity view
- Expose more Team Concert collaboration value to Visual Studio developers



Access to developer focused SCM, work item and build



Web UI for project leads and developer access

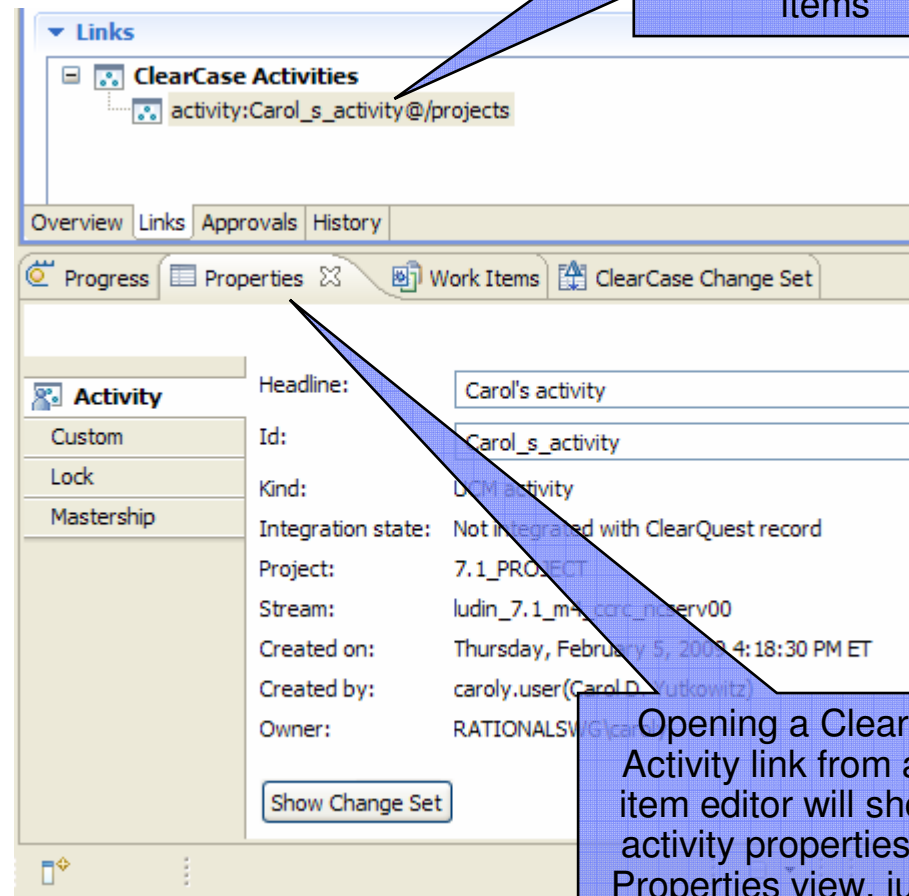


* Permission provided



ClearCase Bridge

- Now you can link work items with ClearCase UCM change sets
- If you use the ClearCase Remote Client and UCM you can associate a UCM change set with a Team Concert work item.
- Then you can use agile planning, taskboards and dashboards to show project status of work done in ClearCase! (Requires upcoming patch 2009B to CCRC and RTC 2.0 M2 or later)



References to ClearCase Activities will also show up on the Links tab of their associated work items

Opening a ClearCase Activity link from a work item editor will show the activity properties in the Properties view, just as if the properties were requested from CCRC directly.



ClearCase Importer Wizard

- Imports from ClearCase base or UCM with history
- Choose all baselines or particular baselines or labels
- ClearCase 7.0, 7.0.1 and 7.1.x supported

☒ Import from an existing Base ClearCase branch

ClearCase Branch Type Selector:

Format: <branch-type-name>@<VOB-selector>

Locked ClearCase Label Type Selector:

Format: <label-type-name>@<VOB-selector>

☒ Import with history from ClearCase

Choose Baselines to Import

☒ Import all baselines

☐ Import all baselines which have the following attribute type:

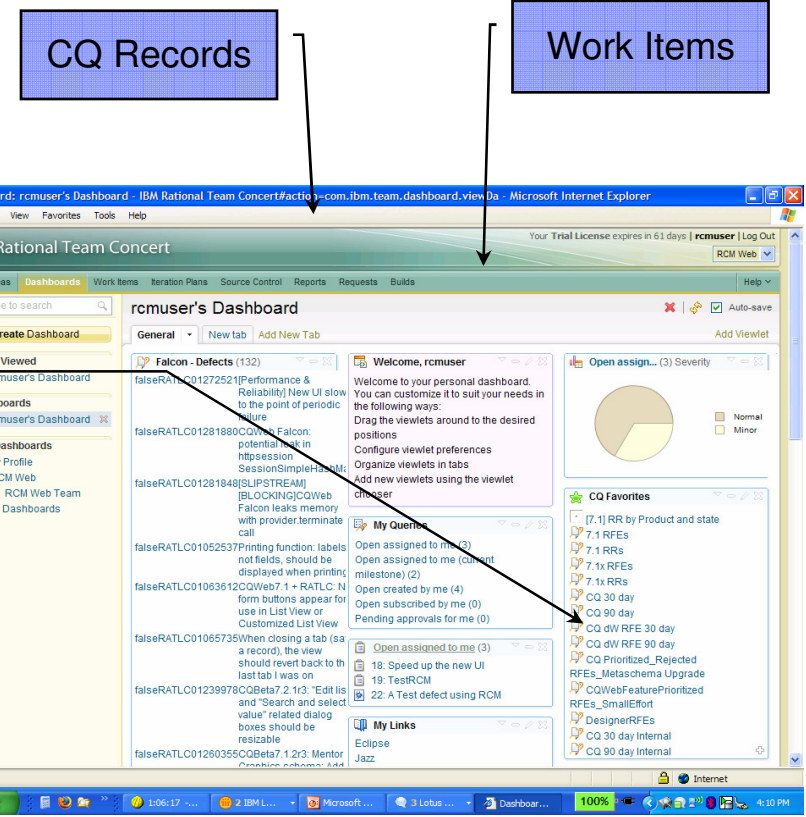
Format: <attribute-type-name>@<VOB-selector>



ClearQuest Bridge

Lower Total Cost of Ownership

- Reduces Time/Network Traffic
 - ▶ No Waiting for Data Synchronization so Key Use Cases Will Be Faster
 - ▶ Quicker Access to Record Information
- Lower Administration
 - ▶ alternate mechanism for linking CQ with Team Concert; create & maintain sync rules not required
- More Manageable Repositories
 - ▶ No Data Replication - Helps Minimize Database Growth
- Integrated User Experience Reduces Training Costs
 - ▶ CQ Bridge UI Provides Integration On The Glass Between the RTC and CQ
 - ▶ Appears As If You Are Working In a Jazz-based Environment



ClearQuest Bridge

Integrated User Experience

- Leverage RTC UI Capabilities
 - ▶ Dashboard Capabilities
 - Startup Query
 - ClearQuest Query
 - ClearQuest Favorites list
 - Iteration progress view
- Trusted ClearQuest Web UI
 - ▶ Search by Id or Full Text
 - ▶ Favorites
 - ▶ Navigator
 - ▶ Resultset
 - ▶ Record
- New – Link CQ Records and WIs
 - ▶ Work Items
 - Create New & Link with ClearQuest
 - Link with existing work item
 - Annotation of links

ClearQuest Records

Rational Team Concert Your Trial License expires in 23 days | rcuser | Log Out | ?

Project Areas Dashboards Work Items Plans Source Control Reports Builds **ClearQuest Records** RCM Web

All Defects Previous | 1 - 20 of 72 | Next

20 Items Per Page

	id	Headline	Owner
1	SAMPL00000008	Batch Update Demo 2 alt-C does not invoke cancel	engineer
2	SAMPL00000009	Demo 2 inventory re-order not done on large sale 1	user
3	SAMPL00000010	Demo 2 logout button should be disabled during sale	engineer
4	SAMPL00000012	would like logout button to be larger - Demo 123	engineer
5	SAMPL00000013	logout in middle of sale aborts sale	engineer
6	SAMPL00000014	clerk allowed to charge too much on credit card	engineer
7	SAMPL00000015	end-of-shift report fails if after midnight	admin
8	SAMPL00000016	too many spaces in "change due" field	
9	SAMPL00000017	delete operation leaves blank line in form	engineer
10	SAMPL00000018	add item button not active after adding 3 other items	lead
11	SAMPL00000019	sales tax incorrect for NH	
12	SAMPL00000020	credit card refused message is unclear	lead
13	SAMPL00000021	inventory report is not running correctly	
14	SAMPL00000022	delete item button deletes two items	engineer
15	SAMPL00000023	request change due in larger font	lead
16	SAMPL00000024	overriding price operation allows negative number	
17	SAMPL00000025	heading of application looks too crowded	lead
18	SAMPL00000026	part number column not wide enough	engineer
19	SAMPL00000027	add item button is out of line with the other buttons	
20	SAMPL00000028	context sensitive help fails from reorder window	

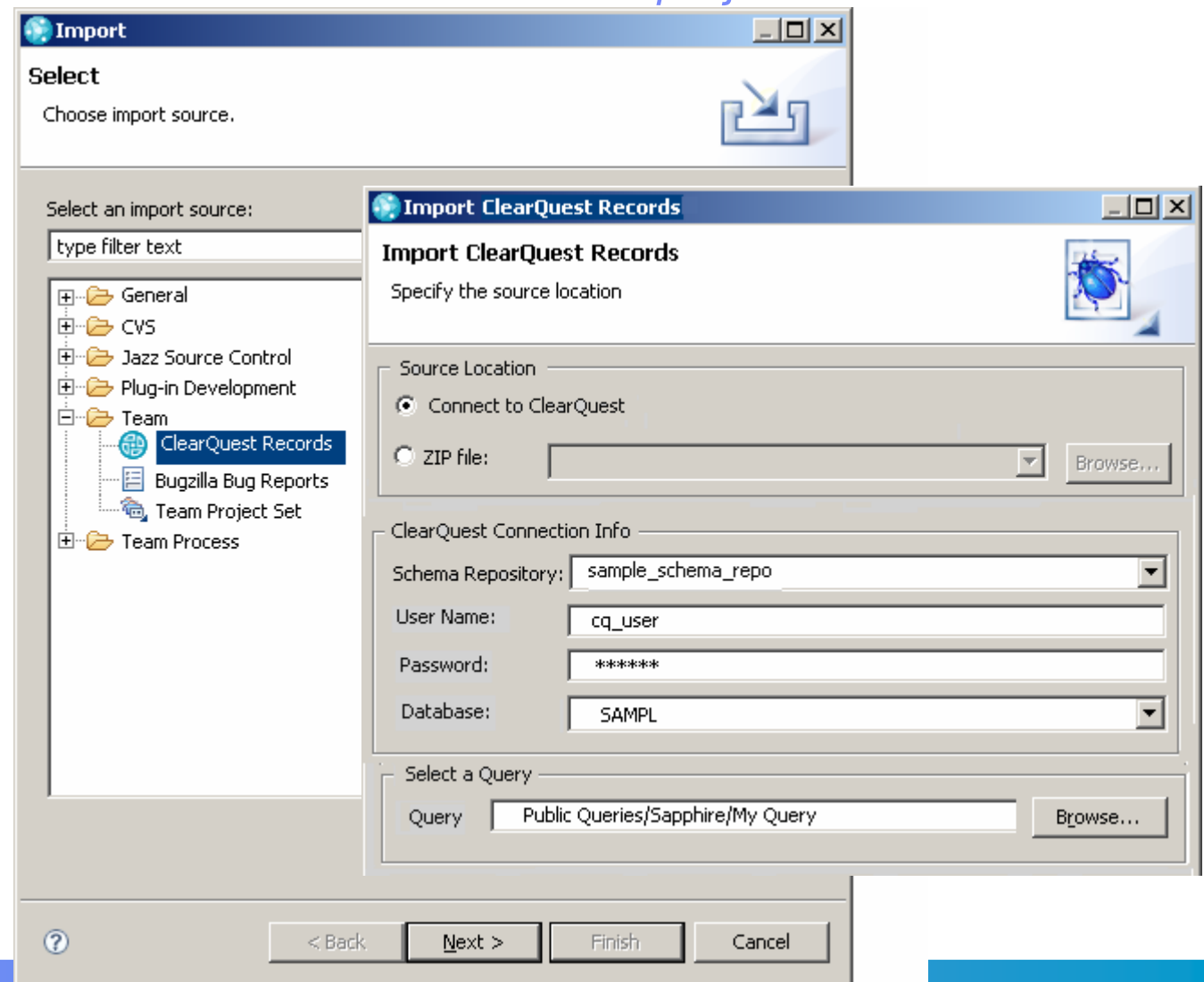
IBM jazz



ClearQuest Importer Wizard

Provide ability to move select CQ records to an RTC project

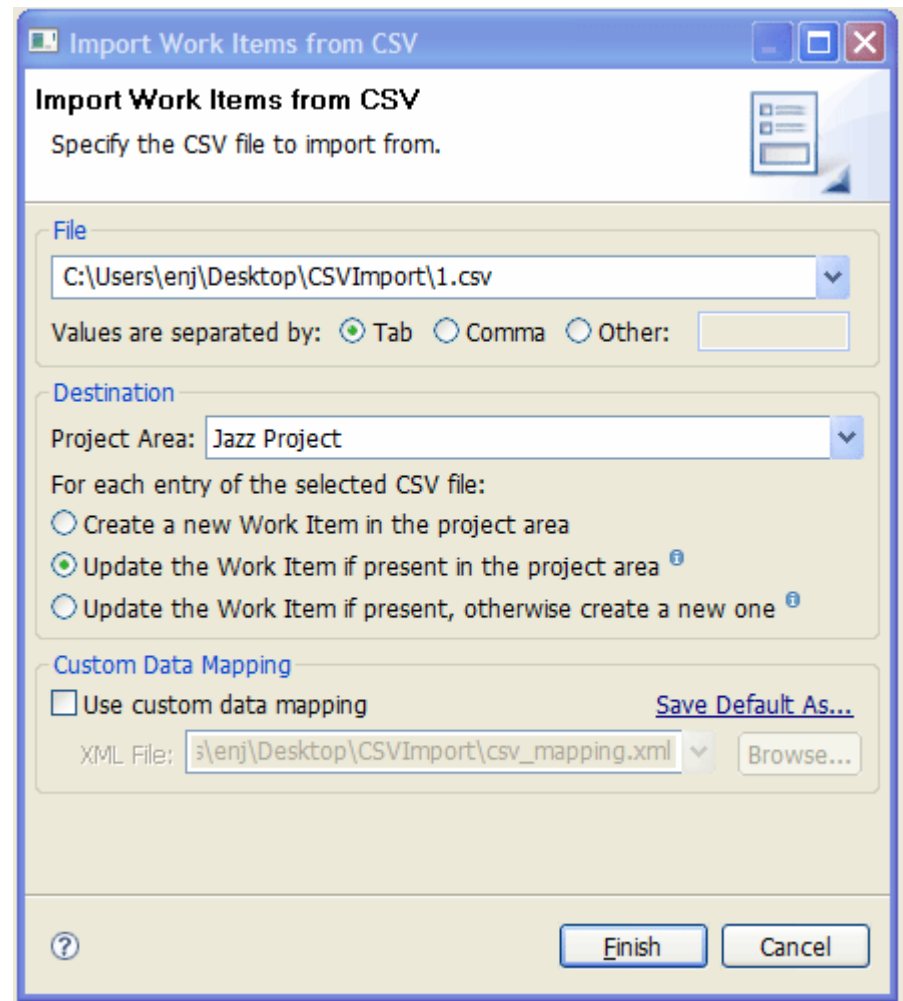
- Import CQ records to an intermediate XML format
- Select scope of import using CQ query
- Create a mapping file to map CQ Record types to work item attributes
 - ▶ Sample provided
- Import into an RTC project once mapping has been validated.



CSV Importer

Streamlines migrations

- Create new work items or update existing work items
- First row or custom XML mappings
- Allows for work items to be imported from other systems



What's coming up in RTC 2.0?

- *Deliver Global Enterprise Readiness*
- *Enhanced agile planning via web*
- *Support Collaborative ALM*
- *Support growth of a vibrant Ecosystem*
- *Bridges to your existing environments*
- ***Other Enhancements***

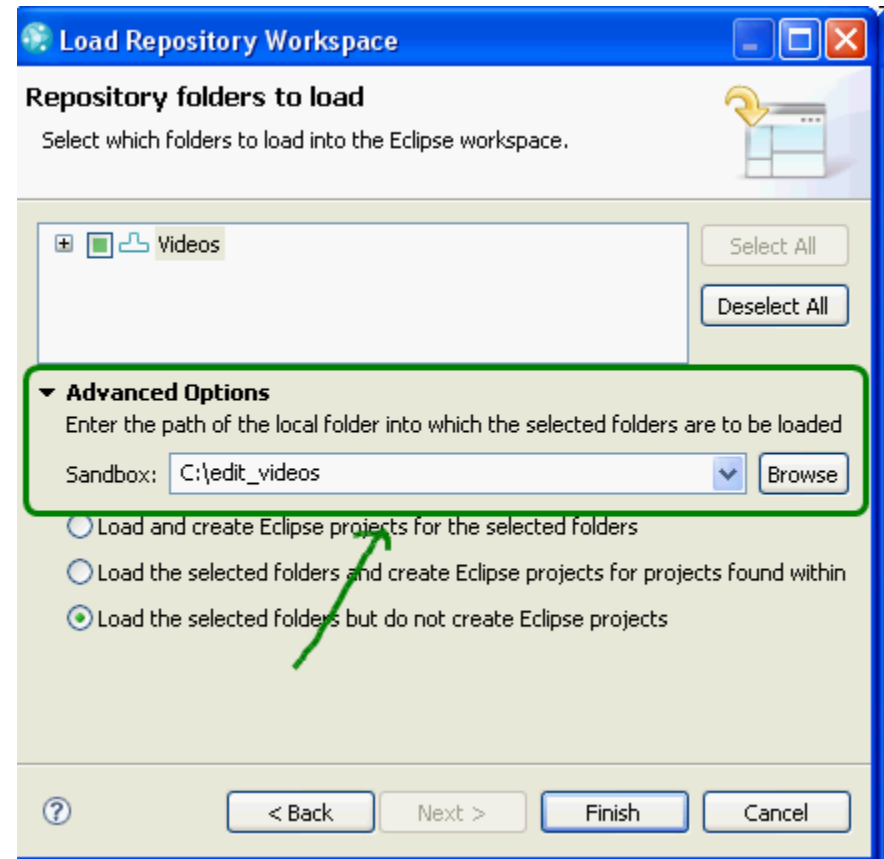


Driving Business Differentiation



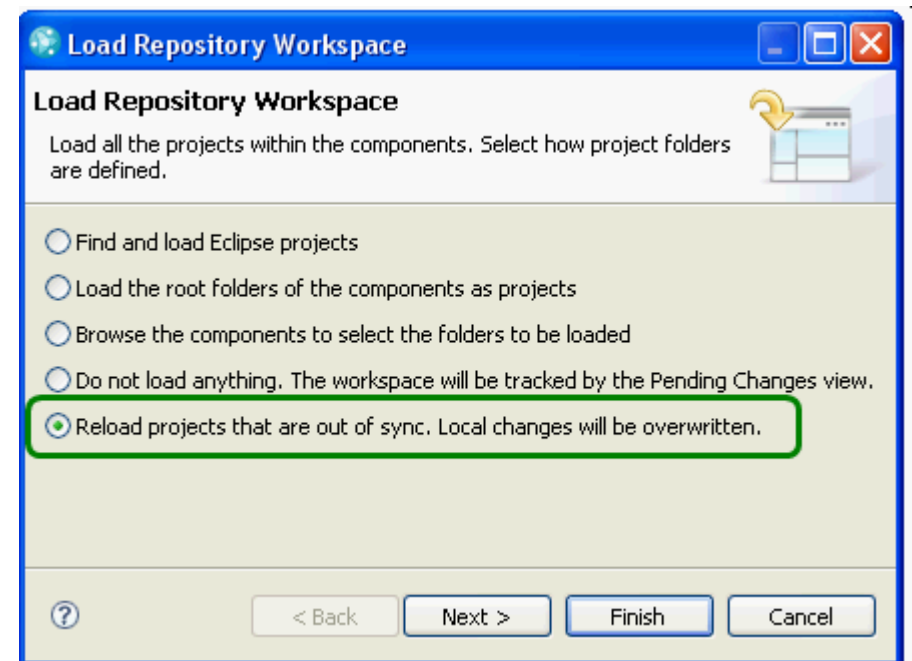
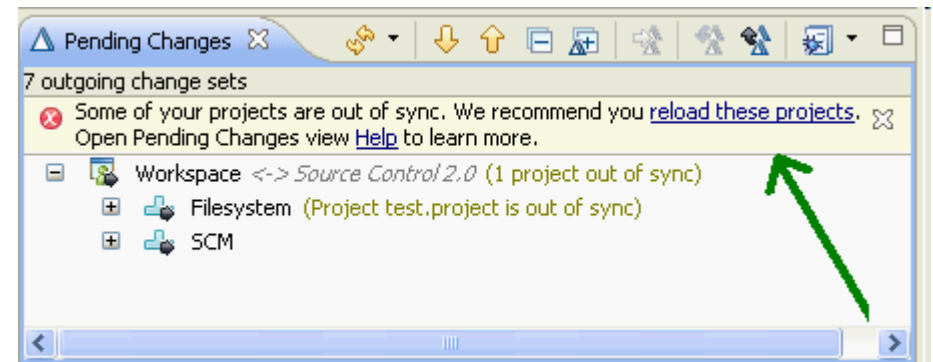
Flexible SCM workspace loading

- You can load to any location on disk and have your projects imported into your Eclipse session. This means that you can keep your non-Eclipse directory structure that worked with external tools as is.
- There can be contents in the sandbox which are outside of your Eclipse workspace. This means that command line users and Visual Studio users won't see ".project" files.



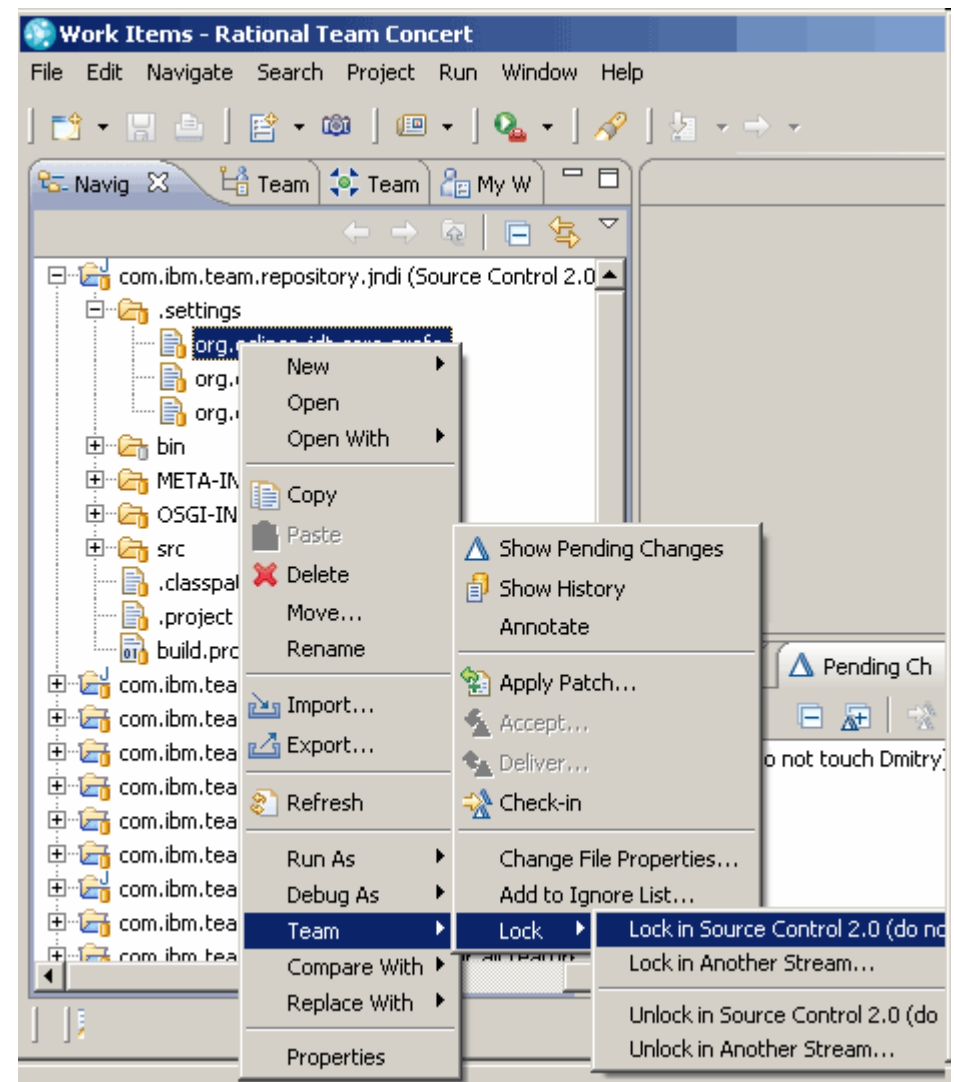
Pending Changes view detects out of sync projects

- Pending Changes view now warns when projects are out of sync; i.e. when the content loaded in the sandbox on disk doesn't correspond to the content in the corresponding repository workspace
- The pending changes view allows the calculation of local changes for individual sandboxes (useful if the sandbox contains contents that are not within Eclipse projects - allowing you to find, check-in, undo, etc. those changes).
- The load wizard supports loading just the projects that are out of sync.



SCM file locking to avoid parallel file changes or merging

- You can now lock a file in a particular stream. Locks are very useful for file types like images, presentations or spreadsheets, where you don't want to people to modify a file independently or you wish to avoid merging a file.
- In such cases, it is better to lock the file to ensure that only one team member at a time is changing that particular file.







Enhanced Work Item Customization



User, Category, and Iteration custom attributes types, along with the ability to define custom attributes of the following types:



- Work Item and Work Item lists
- Project Area and Project Area lists
- Team Area and Team Area lists
- Tags
- User lists

Miscellaneous

Single Work Item:  90: Defin...new build 



Single Team:  JUnit Team 

Single Project:  JUnit Project 

Single Process Area:  JUnit Team 



Miscellaneous

Multi Process:

 JUnit Project [localhost]
  JUnit Team [development]



Add...
 Remove

Multi Project:

 Jazz Project [localhost]
  JUnit Project [localhost]

Add...
 Remove

Multi Work Item:

 90: Define a new build
  94: Define team members

Add...
 Remove



Multi Contributor:

☐ Bill Cassavelli
 ☐ Markus Kent

Add...
 Remove

Internal Tags:

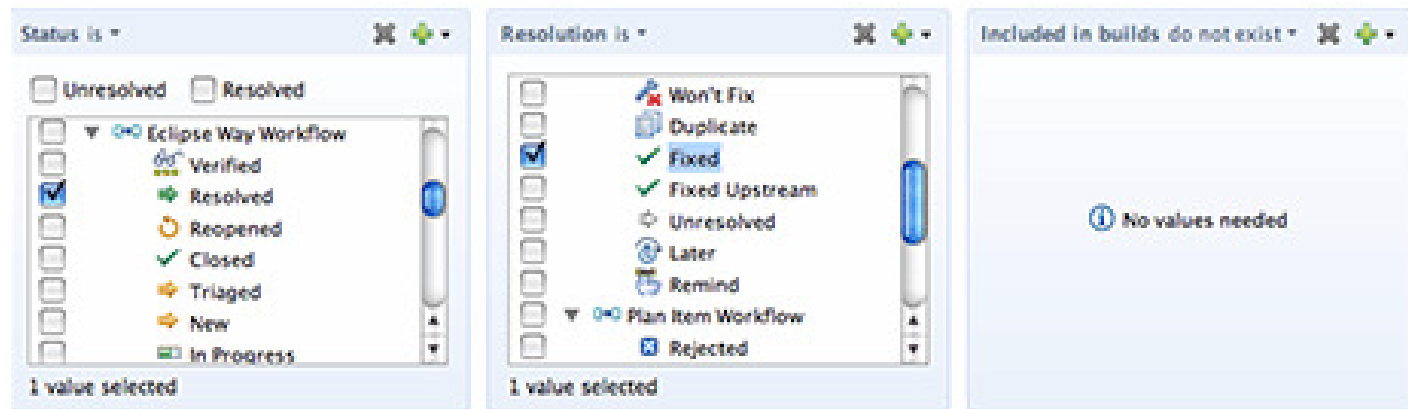
Multi Team:

 Jazz Project Team [Main Development]
  JUnit Team [development]

Add...
 Remove



New Query Functionality



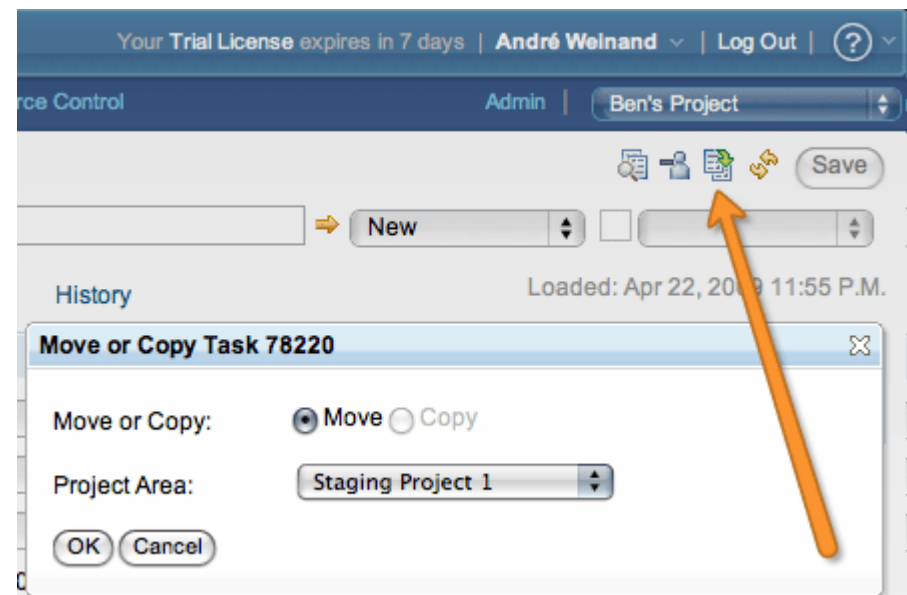
- New flexibility in constructing queries:
 - ▶ 'Not Exists' operator for link attributes
 - ▶ Link attributes can be combined
 - ▶ ANDing of multiple custom attributes
 - ▶ Query of multi-valued attributed
- Examples of new queries
 - ▶ Stories without children
 - ▶ Fixed defects not in build
 - ▶ Adoption items affecting team

New productivity for developers and project managers



Move/Copy work items

- Easily move or copy work items between project areas
- Encourages collaboration across projects



What's coming up in RTC 2.0?

- ***Deliver Global Enterprise Readiness***
- ***Enhanced agile planning via web***
- ***Support Collaborative ALM***
- ***Support growth of a vibrant Ecosystem***
- ***Bridges to your existing environments***
- ***Other Enhancements***



Driving Business Differentiation



For the most up to date information ...

- Rational Team Concert 2.0 beta on jazz.net



Driving Business Differentiation





© Copyright IBM Corporation 2007. All rights reserved.

The information contained in these materials is provided for informational purposes only, and is provided AS IS without warranty of any kind, express or implied. IBM shall not be responsible for any damages arising out of the use of, or otherwise related to, these materials. Nothing contained in these materials is intended to, nor shall have the effect of, creating any warranties or representations from IBM or its suppliers or licensors, or altering the terms and conditions of the applicable license agreement governing the use of IBM software. References in these materials to IBM products, programs, or services do not imply that they will be available in all countries in which IBM operates. Product release dates and/or capabilities referenced in these materials may change at any time at IBM's sole discretion based on market opportunities or other factors, and are not intended to be a commitment to future product or feature availability in any way.

IBM, the IBM logo, the on-demand business logo, Rational, the Rational logo, and other IBM products and services are trademarks of the International Business Machines Corporation, in the United States, other countries or both. Other company, product, or service names may be trademarks or service marks of others.

